



## **RUSSELL SIMPSON**

A well-presented two-bedroom apartment on the fifth floor of this distinguished Chelsea address

YORK HOUSE  
CHELSEA SW3

# York House

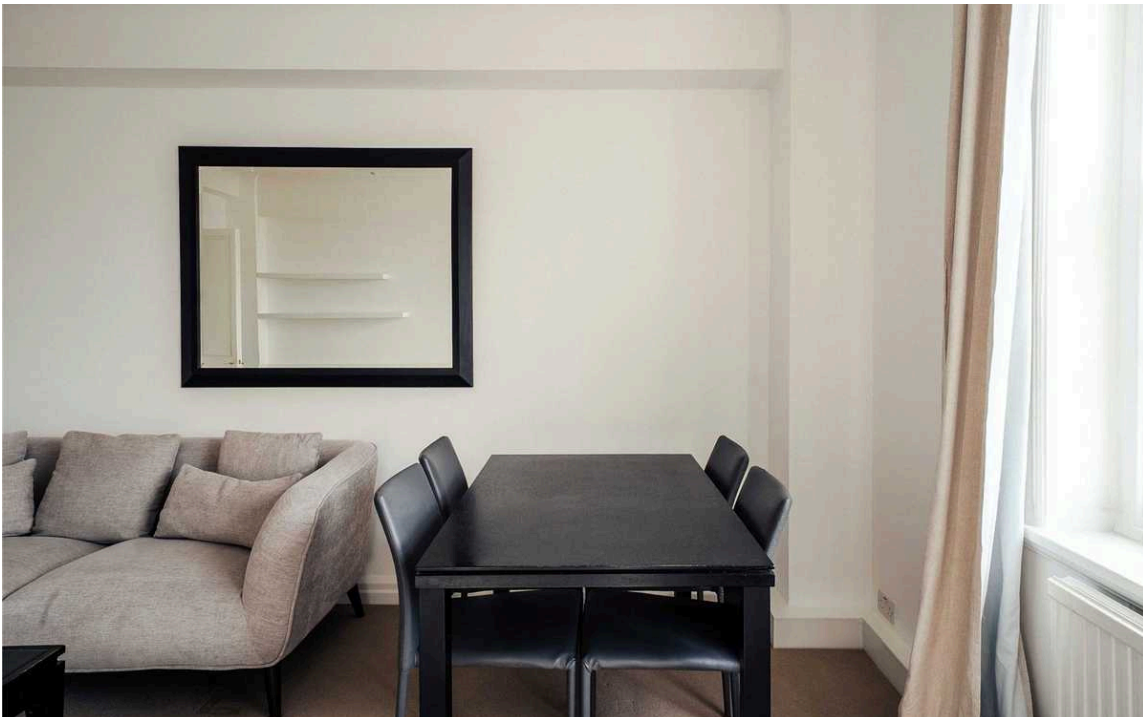
£1,038 P/W

BEDROOMS 2	INTERNAL 790 <small>SQ FT</small>	OUTDOOR —	FURNISHED STATUS —
BATHROOMS 1	73 <small>SQM</small>	EPC D	COUNCIL TAX RBKC, G



## The Property

A well-presented two-bedroom apartment set on the fifth floor of the iconic York House, with lift access and a porter. Entering the flat on the fifth floor, the entrance corridor leads through to the principal rooms in a logical and well-considered sequence. The reception room is a bright, well-proportioned space with a large window dressed with beige curtains, allowing natural light to fill the room. A wall of white built-in cabinetry with panelled doors and symmetrical floating shelves above provides generous storage and adds a refined architectural quality to the space. Track lighting runs across the ceiling, and the room accommodates both a sitting and dining area with ease. The kitchen is positioned off the reception and features white glossy fitted units with a tiled backsplash, a double-basin sink, and an electric hob. A large window looks out onto greenery, bringing in excellent natural light and creating a bright, airy atmosphere. Bedroom one is a generous double room with a large multi-pane window framed by beige curtains, a radiator beneath, and views of green foliage outside. Track lighting and beige carpet complete the space. Bedroom two is a well-proportioned second room, also benefitting from a large window with beige curtains and radiator, with three floating shelves and a dark-framed mirror on the wall. The bathroom is finished with white tiles and a decorative green diamond-pattern border, a glossy black countertop with an integrated oval sink, a large mirror, a circular adjustable wall mirror, a heated towel rail, and a roller blind window. A separate shower and bath area features a glass panel enclosure, a traditional-style faucet, and a marble-effect countertop surround.



---

img 1

Living Room

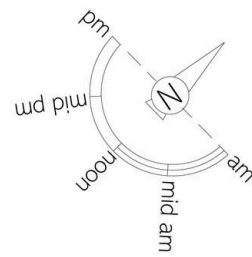
img 2

---

Dining Space

## The Neighbourhood

Turks Row is a quiet residential address in the heart of Chelsea, SW3. Sloane Square is moments away, offering access to the King's Road with its upmarket boutiques, restaurants, and cafés. The open spaces of Ranelagh Gardens and the Royal Hospital Chelsea are within easy reach, as is the excellent transport links at Sloane Square Underground station. The area is one of London's most sought-after, combining elegant period architecture with a vibrant and well-connected village feel.



York House, Turk's Row, SW<sub>3</sub> **RUSSELL SIMPSON**

Approximate Internal Area  
792 sq ft / 74 sq m

This plan is for layout guidance only. Not drawn to scale unless stated. Windows and door openings are approximate. Whilst every care is taken in the preparation of this plan, please check all dimensions, shapes, and compass bearings before making any decisions reliant upon them.



**RUSSELL  
SIMPSON**

---

## Contact Us

+44 (0) 20 7225 0277

151A Sydney Street  
London  
SW3 6NT

[chelsea@russellsimpson.co.uk](mailto:chelsea@russellsimpson.co.uk)