



## **RUSSELL SIMPSON**

Superb three-bedroom mews house  
with generous reception spaces

WILTON ROW  
KNIGHTSBRIDGE SW1X

Wilton Row

£2,100 <sub>P/W</sub>

BEDROOMS 3	INTERNAL  1,720 <sub>SQ FT</sub>  159 <sub>SQM</sub>	OUTDOOR  68 <sub>SQ FT</sub>	FURNISHED STATUS  Unfurnished
BATHROOMS 2		EPC  D	COUNCIL TAX  Westminster City, H



## The Property

Beautifully presented three-bedroom house with two terraces.

Entering the house on the ground floor, stairs lead you up to the first floor, where you find a spacious reception room with polished wooden floors and high ceilings that create a sense of scale. The bright, light-filled space features large arched windows that fill the room with natural light, while recessed lighting adds contemporary appeal. The reception room flows seamlessly into the dining area, creating a generous entertaining space.

The modern kitchen is fitted with light-coloured units and dark granite worktops, complemented by white subway tile backsplash. A white farmhouse sink sits beneath windows with wooden blinds, while stainless steel appliances include a substantial range with double ovens. The kitchen opens directly onto the terrace through French doors. This floor also features a utility room providing additional storage and functionality.



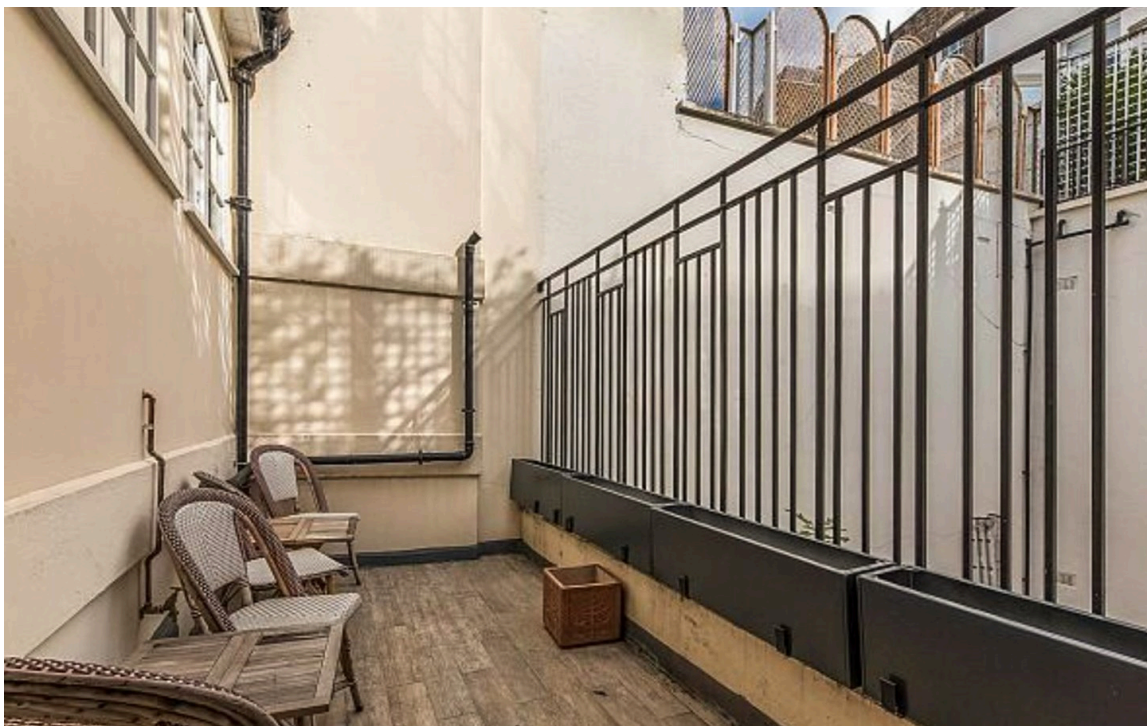


## The Bedrooms

On the upper floors, the house offers three well-proportioned bedrooms and a secondary terrace. The principal bedroom features built-in wardrobes and benefits from an en-suite bathroom with contemporary fittings, including a vessel sink and modern fixtures. The bright, minimalist design is enhanced by recessed lighting throughout. A second bathroom serves the remaining bedrooms, fitted with modern tiles and featuring both bath and shower facilities.







## Outdoor Spaces

The property includes a private terrace accessible from the kitchen on the first floor, providing space for outdoor dining. The second floor features an additional terrace, both offering private outdoor space in this quiet mews setting.



## The Neighbourhood

Wilton Row is a picturesque cobbled mews moments away from the upmarket boutiques and restaurants of Knightsbridge, with Hyde Park within easy reach.

Wilton Row,  
SW1X

**Approx Gross Internal Area**

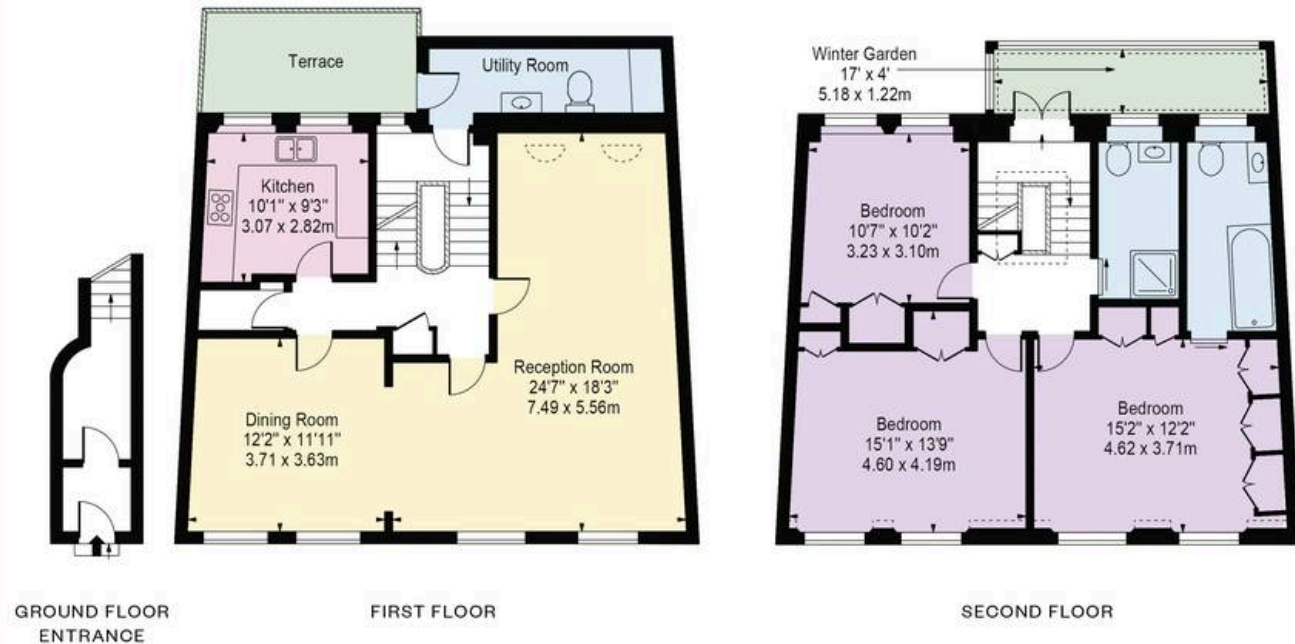
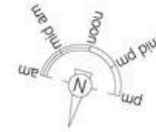
1,720 sq ft / 159.79 sq m

**Approx Gross Internal Area  
of Winter Garden**

69 sq ft / 6.41 sq m

**RUSSELL  
SIMPSON**

This plan is for layout guidance only. Not drawn to scale unless stated. Windows and door openings are approximate. Whilst every care is taken in the preparation of this plan. Please check all dimensions, shapes, and compass bearings before making any decisions reliant upon them.



**RUSSELL  
SIMPSON**

---

## Contact Us

+44 (0) 20 7225 0277

151A Sydney Street  
London  
SW3 6NT

[chelsea@russellsimpson.co.uk](mailto:chelsea@russellsimpson.co.uk)

In accordance with the Property Mis-Description Act 1991, the following details have been prepared in good faith, and are not intended to constitute part of an offer or contract. Any information contained herein (whether in the text, plans or photographs) is given in good faith but should not be relied upon as being a statement of representation of fact. Nothing in these Particulars shall be deemed to be a statement that the property is in good condition or otherwise nor that any services or facilities are in good working order. Any measurements of distances referred to herein are approximate only. October 2021