



RUSSELL SIMPSON

Elegant flat to rent on a magnificent
Georgian crescent in Belgravia

WILTON CRESCENT
KNIGHTSBRIDGE SW1X

Wilton Crescent

£1,500 P/W

BEDROOMS 2	INTERNAL 1,103 <small>SQ FT</small>	OUTDOOR 65 <small>SQ FT</small>	FURNISHED STATUS Furnished
BATHROOMS 1	102 <small>SQM</small>	EPC E	COUNCIL TAX Westminster City, G

The Property

Two bedroom flat with opulent interiors and communal garden access on one of London's grandest streets

Entering the house on the first floor, the front door opens directly onto a generous double reception room. This includes a seating area, a pair of double French doors opening onto the terrace, and a dining room with inbuilt shelving.

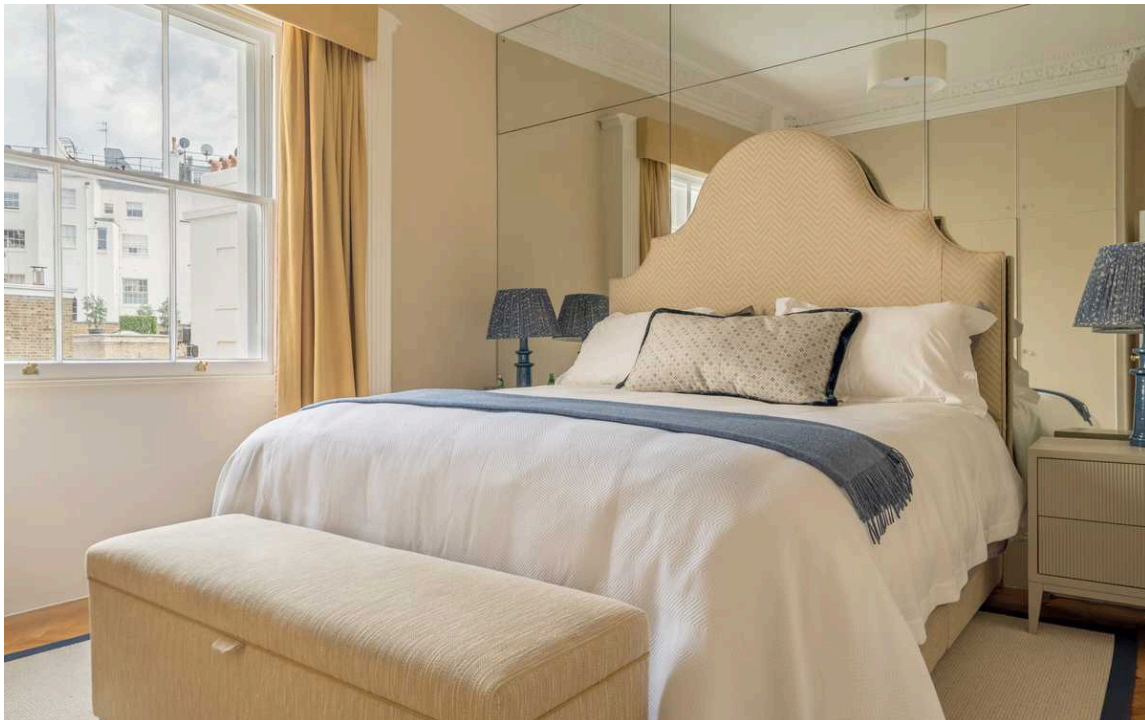




Indoor Spaces

Next door is a fitted kitchen, with a corridor leading towards two bedrooms. Both bedrooms have inbuilt storage and south-facing windows for added brightness. They share a bathroom.

The property includes a terrace running the width of the reception room. In addition, residents have access to the communal garden square opposite.





The Neighbourhood

Wilton Crescent is a beautiful terrace of Georgian housing in the heart of Belgravia. It was built by Thomas Cundy II, estate surveyor for the Grosvenor family, in the early nineteenth century. The houses are faced in Portland stone and overlook a garden square. The street has been home to many celebrated politicians, including Lord Mountbatten, the last Viceroy of India. From here, the restaurants, shops and underground station of Knightsbridge are close. In addition, the open spaces of Hyde Park and Kensington Gardens are a short walk away.

Wilton Crescent, SW1X

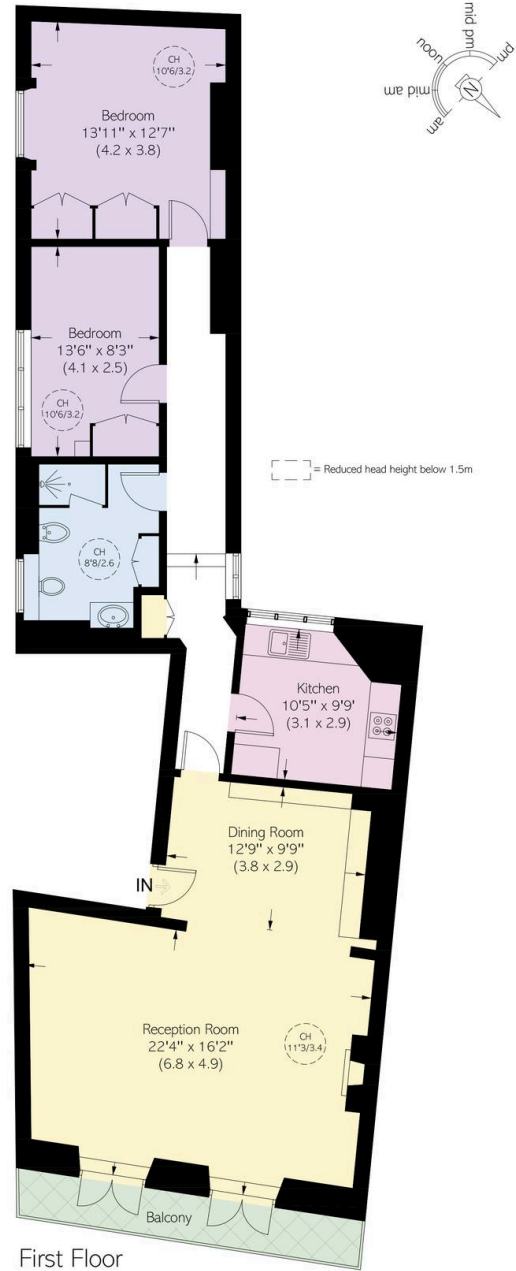
Approximate area
102.5 sq m / 1103 sq ft

Including limited use area
(1.2 sq m / 13 sq ft)

Approximate balcony area
6.1 sq m / 66 sq ft

RUSSELL SIMPSON

This plan is for layout guidance only. Not drawn to scale unless stated. Windows and door openings are approximate. Whilst every care is taken in the preparation of this plan, please check all dimensions, shapes, and compass bearings before making any decisions reliant upon them.



First Floor

**RUSSELL
SIMPSON**

Contact Us

+44 (0) 20 7225 0277

Contact us

info@russellsimpson.co.uk

Sydney Street

+44 (0) 20 7225 0277

151A Sydney Street

London

SW3 6NT

chelsea@russellsimpson.co.uk

Kensington Square

+44 (0) 20 3761 9691

13 Kensington Square

London

W8 5HD

kensington@russellsimpson.co.uk