

## **RUSSELL SIMPSON**

A newly refurbished three-bedroom  
apartment of exceptional scale in  
the heart of Knightsbridge

WILLIAM STREET HOUSE  
KNIGHTSBRIDGE SW1X

# William Street House

£2,850 P/W

BEDROOMS 3	INTERNAL 2,180 <small>SQ FT</small>	OUTDOOR 35 <small>SQ FT</small>	FURNISHED STATUS Unfurnished
BATHROOMS 3	202 <small>SQM</small>	EPC D	COUNCIL TAX Westminster City, H

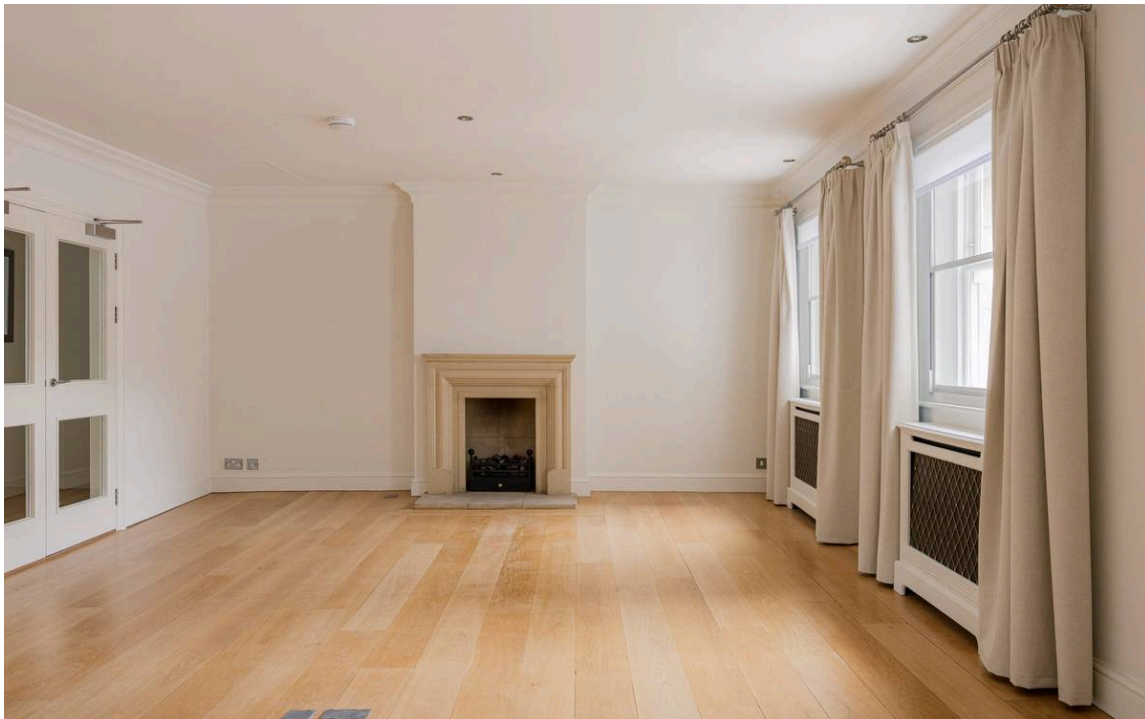


## The Property

A newly refurbished third-floor apartment of impressive proportions, accessed by lift.

Entering the flat on the third floor, the entrance hall sets a refined tone, leading through to two generously proportioned reception rooms. The principal reception room is a bright, well-proportioned space with light wood flooring and large windows that fill the room with natural light. Built-in shelving with glass niches adds a considered architectural detail, while the overall feel is clean and contemporary.

The second reception room, the larger of the two, offers substantial space and similarly light-filled interiors, with the same light wood flooring continuing throughout.



## The Kitchen

The kitchen is fitted with sleek white cabinetry and light tiled flooring, with ample storage across both upper and lower units and a window drawing in natural light. A utility room adjoins the kitchen, adding further practicality to this level. The kitchen also provides access to the balcony.





## The Bedrooms

The three bedrooms are each well-proportioned and finished to a high standard. The principal bedroom features light carpet, mirrored built-in wardrobes and recessed ceiling lighting. Each bedroom benefits from an en-suite bathroom, all finished with large-format marble-effect wall tiles, chrome fixtures and fittings. The principal en-suite features a full bath with glass screen and chrome handheld attachment alongside a heated towel rail. A further en-suite offers a walk-in rainfall shower with glass enclosure, a vessel sink and a round mirror. The third bathroom is a sleek, minimalist space with a wall-hung washroom, dark wood vanity unit and a separate bath.



# The Neighbourhood

The balcony is accessed directly from the kitchen and features light wooden decking with an open outlook across the rooftops.

William Street is a quiet residential address in the heart of Knightsbridge, one of London's most upmarket neighbourhoods. Knightsbridge station is moments away, providing direct access to the Piccadilly line. Sloane Street, with its array of designer boutiques, is within easy reach, as are the open spaces of Hyde Park and the world-renowned department stores of Brompton Road. A wide selection of restaurants, cafés and cultural attractions are all a short walk away, making this an exceptionally well-connected address.



**William Street House,  
William, Street, SW1**

**RUSSELL  
SIMPSON**

**Approximate Internal Area**  
2,486 sq ft / 229 sq m

**Outside Area**  
36 sq ft / 3 sq m

This plan is for layout guidance only. Not drawn to scale unless stated. Windows and door openings are approximate. While every care is taken in the preparation of this plan, please check all dimensions, drops and compass bearings before making any decisions reliant upon them.

Third Floor

**RUSSELL  
SIMPSON**

---

## Contact Us

+44 (0) 20 7225 0277

151A Sydney Street  
London  
SW3 6NT

[chelsea@russellsimpson.co.uk](mailto:chelsea@russellsimpson.co.uk)