



**RUSSELL
SIMPSON**

William Street House

WILLIAM STREET HOUSE
KNIGHTSBRIDGE SW1X

William Street House

£1,400 _{P/W}

BEDROOMS 3	INTERNAL 1,289 _{SQ FT} 119 _{SQM}	OUTDOOR —	FURNISHED STATUS Unfurnished
BATHROOMS 2		EPC D	COUNCIL TAX —



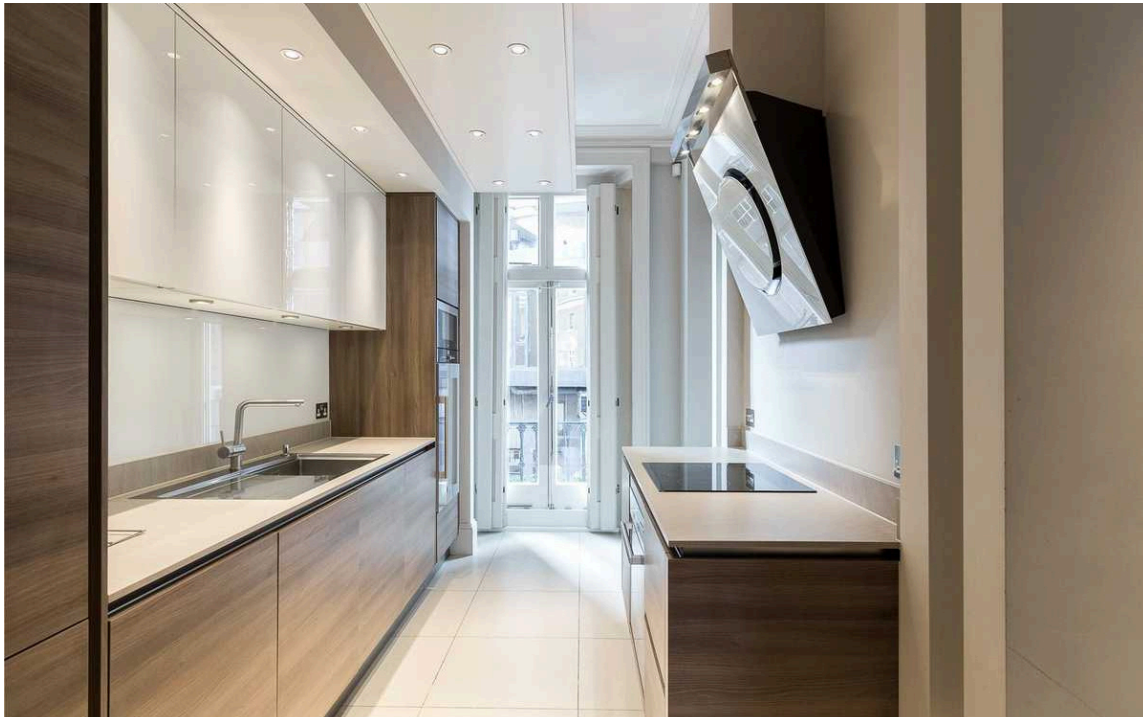
The Property

A bright and immaculately presented first floor flat (with lift) in this well looked after block in Knightsbridge.

The flat offers wooden flooring in the reception room and dining room, along with three well sized bedrooms and two modern bathrooms.

William Street is ideally located a stones throw from Knightsbrige and all it has to offer. Available on an unfurnished basis immediately.

Reception Room: Dining Room: Kitchen: Double Bedroom with en suite Bathroom and Walk in Wardrobe: Two Double Bedrooms: Shower Room: Lift



img 1

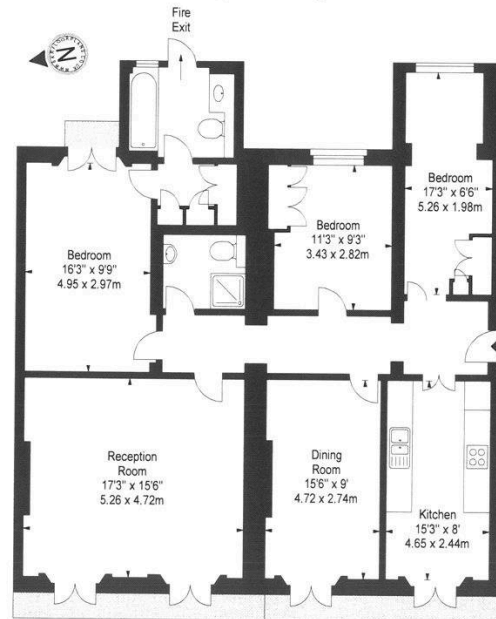
Picture No. 23

img 2

Picture No. 22

FLAT 4,
WILLIAM STREET HOUSE,
WILLIAM STREET, SW1
Approx. Gross Internal Area *
1289 Ft² - 119.75 M²

Illustration For Identification Purposes Only, Not to Scale
* As Defined by RICS - Code of Measuring Practice



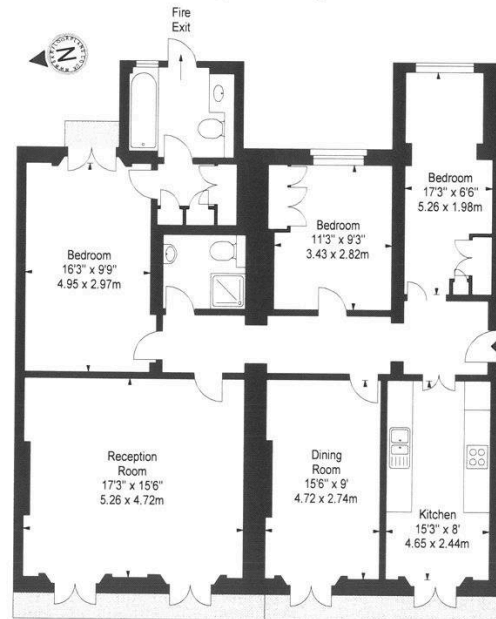
FIRST FLOOR

BKR
FLOORPLANS

www.bkr-floorplans.co.uk
T: 0848 287 2022
2009

FLAT 4,
WILLIAM STREET HOUSE,
WILLIAM STREET, SW1
Approx. Gross Internal Area *
1289 Ft² - 119.75 M²

Illustration For Identification Purposes Only, Not to Scale
* As Defined by RICS - Code of Measuring Practice



FIRST FLOOR

BKR
FLOORPLANS

www.bkr-floorplans.co.uk
T: 0848 287 2022
2009

**RUSSELL
SIMPSON**

Contact Us

+44 (0) 20 7225 0277

151A Sydney Street
London
SW3 6NT

chelsea@russellsimpson.co.uk

In accordance with the Property Mis-Description Act 1991, the following details have been prepared in good faith, and are not intended to constitute part of an offer or contract. Any information contained herein (whether in the text, plans or photographs) is given in good faith but should not be relied upon as being a statement of representation of fact. Nothing in these Particulars shall be deemed to be a statement that the property is in good condition or otherwise nor that any services or facilities are in good working order. Any measurements of distances referred to herein are approximate only. October 2021