



RUSSELL SIMPSON

A large three bedroom flat in a
prime location

WILLIAM STREET HOUSE
KNIGHTSBRIDGE SW1X

William Street House

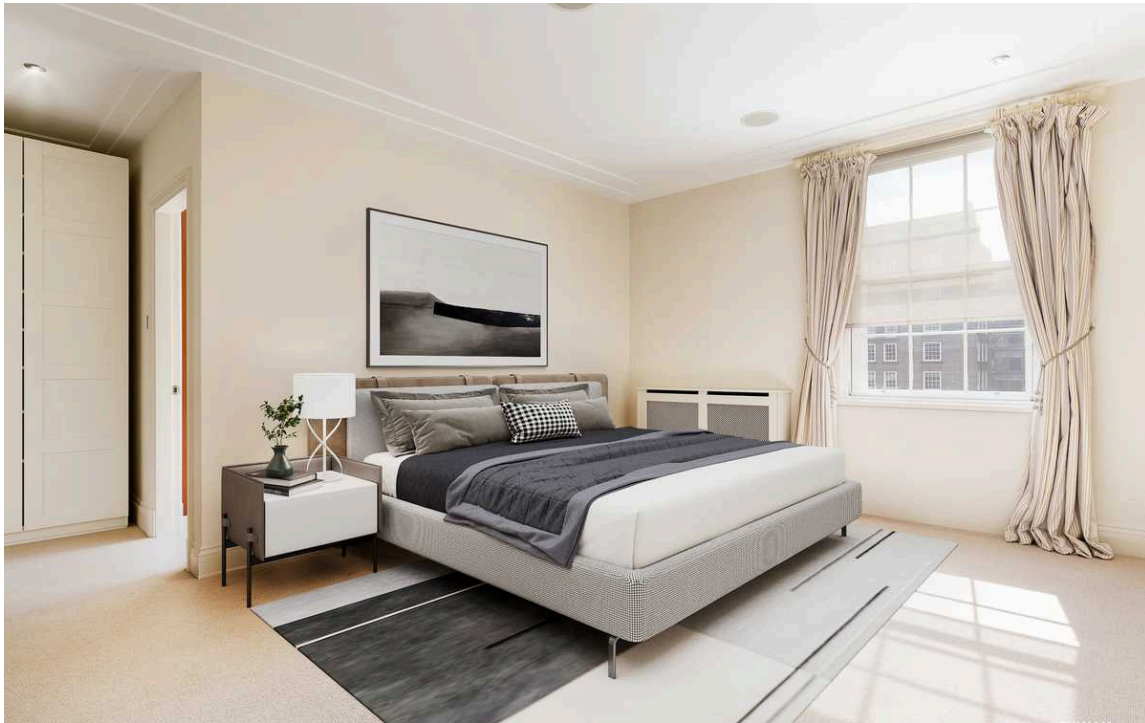
Let

BEDROOMS 3-3	INTERNAL 2,137 SQ FT	OUTDOOR —	FURNISHED STATUS Multiple Options
BATHROOMS 3-3	198 SQM	EPC C	COUNCIL TAX Westminster City, H



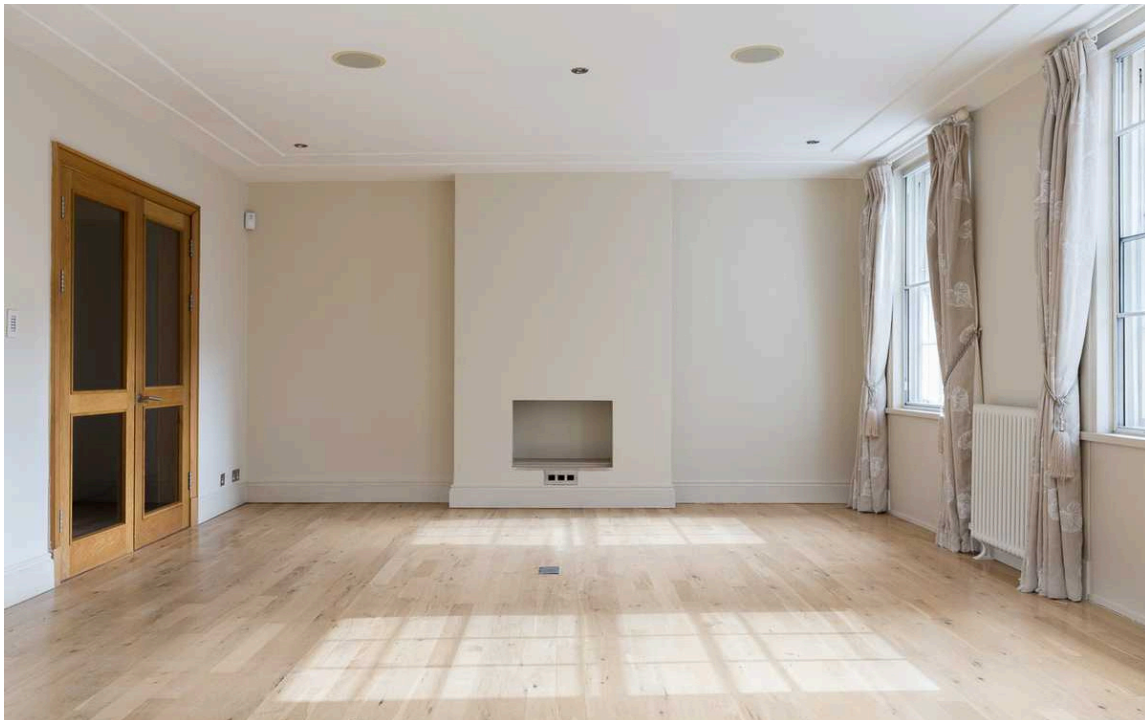
The Property

A bright and well presented presented second floor flat (with lift) in this well looked after block in Knightsbridge.



Indoor Spaces

The flat offers wooden flooring in the reception room and dining room, along with three well sized bedrooms and three modern bathrooms.

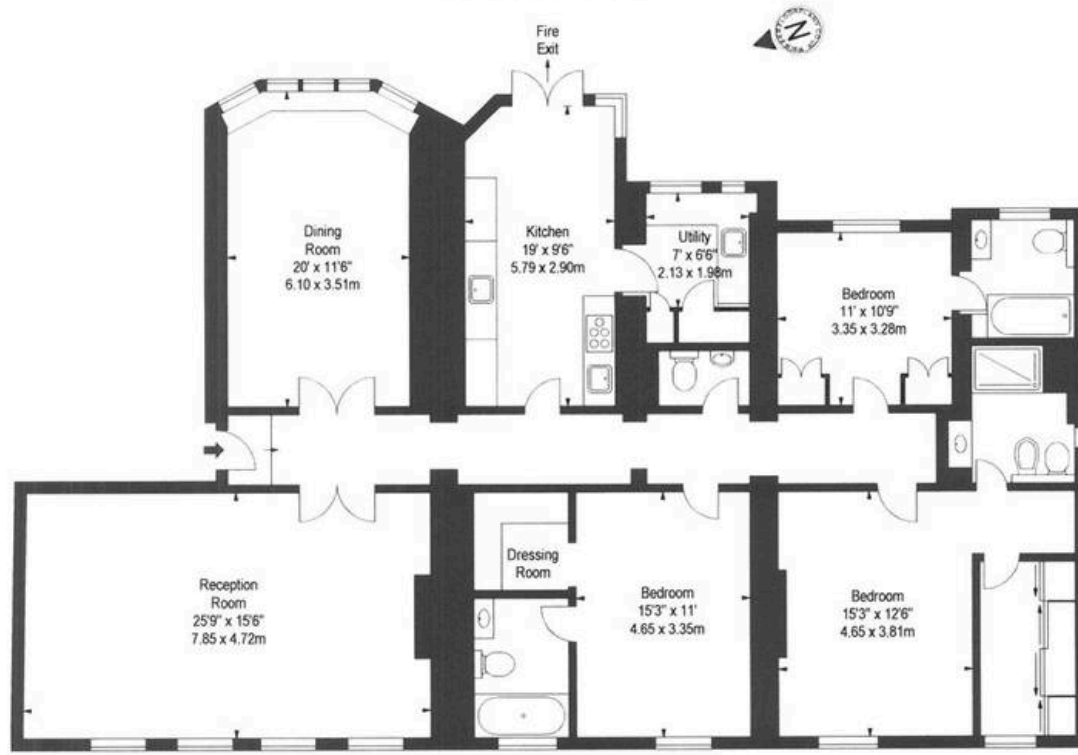


The Neighbourhood

William Street is ideally located a stones throw from Knightsbridge and all it has to offer. Available from mid-October on an unfurnished basis.

**FLAT 7,
WILLIAM STREET HOUSE,
WILLIAM STREET, SW1**
Approx. Gross Internal Area *
2137 Ft² - 198.53 M²

Illustration For Identification Purposes Only. Not to Scale
* As Defined by RICS - Code of Measuring Practice



SECOND FLOOR

BKR
FLOORPLANS
www.bkrfloorplans.co.uk
T: 0844 367 2023
2009

**RUSSELL
SIMPSON**

Contact Us

+44 (0) 20 7225 0277

Contact us

info@russellsimpson.co.uk

Sydney Street

+44 (0) 20 7225 0277

151A Sydney Street
London
SW3 6NT

chelsea@russellsimpson.co.uk

Kensington Square

+44 (0) 20 3761 9691

13 Kensington Square
London
W8 5HD

kensington@russellsimpson.co.uk