



RUSSELL SIMPSON

Elegant two-bedroom apartment in
prime Marylebone location

WHEATLEY STREET
MARYLEBONE W1G

Wheatley Street

£6,500 _{P/M}

<div>BEDROOMS</div> <div>2</div>	<div>INTERNAL</div> <div>1,014 _{SQ FT}</div> <div>94 _{SQM}</div>	<div>OUTDOOR</div> <div>—</div>	<div>FURNISHED STATUS</div> <div>Furnished</div>
<div>BATHROOMS</div> <div>2</div>		<div>EPC</div> <div>D</div>	<div>COUNCIL TAX</div> <div>Westminster City, G</div>



The Property

A beautifully presented two-bedroom flat presented in superb condition.

Entering the flat, the reception room features generous proportions with large windows filling the space with light. The room flows through to a well-appointed dining area, creating an elegant entertaining space. The contemporary kitchen is fitted with sleek white units and marble surfaces, complemented by wooden floors throughout.



The Bedrooms

A helical staircase leads to the lower ground floor, where the principal bedroom offers substantial proportions with fitted storage. The second bedroom is equally well-proportioned with built-in wardrobes. Both bedrooms are served by a modern bathroom featuring contemporary fittings and marble tiling.





The Neighbourhood

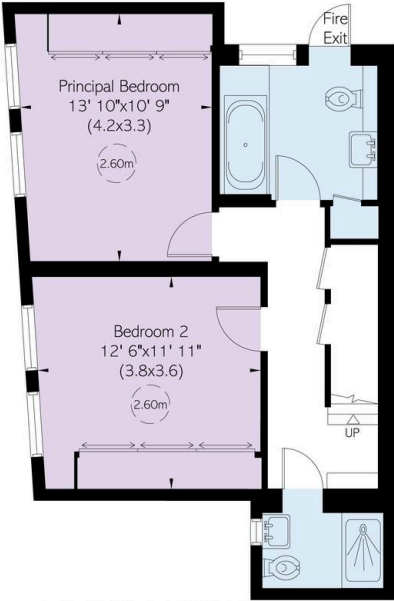
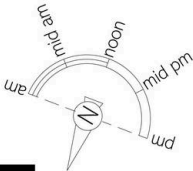
Wheatley Street is a quiet residential address in the heart of Marylebone. The property is moments away from the upmarket boutiques and restaurants of Marylebone High Street, with the open spaces of Regent's Park within easy reach. Bond Street and Oxford Circus stations are a short walk away, providing exceptional transport links across London. The apartment combines refined contemporary interiors with the charm of this sought-after Marylebone location, offering bright, well-proportioned accommodation in one of London's most desirable neighbourhoods.

Wheatley Street, W1

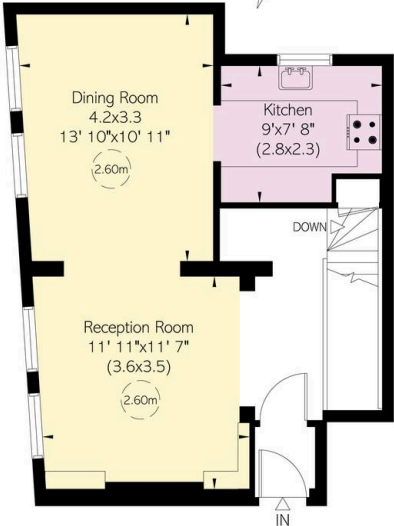
Approximate Internal Area
1,014 sq ft/ 94 sq m

RUSSELL
SIMPSON

This plan is for layout guidance only. Not drawn to scale unless stated. Windows and door openings are approximate. Whilst every care is taken in the preparation of this plan, please check all dimensions, shapes, and compass bearings before making any decisions reliant upon them.



Lower Ground Floor



Upper Ground Floor

**RUSSELL
SIMPSON**

Contact Us

+44 (0) 20 3761 9691

mayfair@russellsimpson.co.uk

In accordance with the Property Mis-Description Act 1991, the following details have been prepared in good faith, and are not intended to constitute part of an offer or contract. Any information contained herein (whether in the text, plans or photographs) is given in good faith but should not be relied upon as being a statement of representation of fact. Nothing in these Particulars shall be deemed to be a statement that the property is in good condition or otherwise nor that any services or facilities are in good working order. Any measurements of distances referred to herein are approximate only. October 2021