



## **RUSSELL SIMPSON**

Exceptionally well-located two-  
bedroom flat to rent on a charming  
mews

WEYMOUTH MEWS  
MARYLEBONE W1G

Weymouth Mews

£3,150 <sub>P/W</sub>

BEDROOMS 2	INTERNAL  1,100 <sub>SQ FT</sub>  102 <sub>SQM</sub>	OUTDOOR  —	FURNISHED STATUS  Furnished
BATHROOMS 2		EPC C	COUNCIL TAX Westminster City, G



## The Property

Modern flat with a bright interior on a sought-after mews near Marylebone High Street

The flat centres on generous third-floor reception room, with an open-plan kitchen and space for separate dining and seating areas. Wooden floors and kitchen units add to the sense of sophistication, while overhead skylights fill this space with daylight.





## The Bedrooms

The flat also features a pair of bedrooms. The third-floor bedroom has a bathroom opposite, while the second-floor bedroom has an ensuite bathroom, and both have inbuilt wardrobe space. It's decorated in a contemporary style and presented in good condition.

In addition, the flat provides high speed wireless broadband, 24 hour CCTV, high quality linen, welcome provisions on arrival and a housekeeping service. All utilities are included. Please note prices are subject to VAT. This drops from 20% to 4% after 28 nights.







## The Neighbourhood

Weymouth Mews is a charming cobbled street in Marylebone. From here, Marylebone High Street is close, with an excellent range of restaurants and shops. Baker Street and Bond Street stations are also nearby, while the open spaces of Regent's Park are a short walk away.

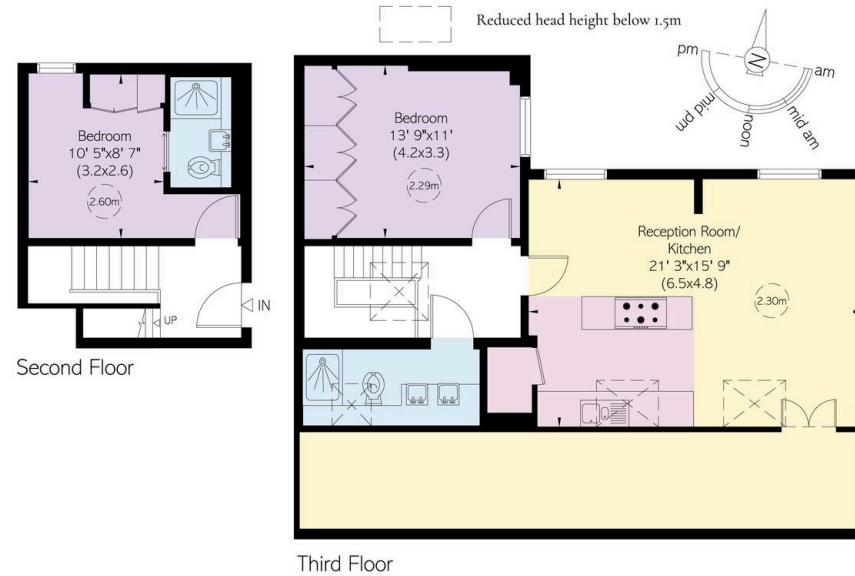
## Weymouth Mews, W1

**RUSSELL  
SIMPSON**

**Approximate Internal Area**  
1,100 sq ft/ 102 sq m

**Including limited use area**  
220 sq ft/ 20 sq m

This plan is for layout guidance only. Not drawn to scale unless stated. Windows and door openings are approximate. Whilst every care is taken in the preparation of this plan, please check all dimensions, shapes, and compass bearings before making any decisions reliant upon them.



**RUSSELL  
SIMPSON**

---

## Contact Us

+44 (0) 20 3761 9691

[mayfair@russellsimpson.co.uk](mailto:mayfair@russellsimpson.co.uk)

In accordance with the Property Mis-Description Act 1991, the following details have been prepared in good faith, and are not intended to constitute part of an offer or contract. Any information contained herein (whether in the text, plans or photographs) is given in good faith but should not be relied upon as being a statement of representation of fact. Nothing in these Particulars shall be deemed to be a statement that the property is in good condition or otherwise nor that any services or facilities are in good working order. Any measurements of distances referred to herein are approximate only. October 2021