



**RUSSELL  
SIMPSON**

Stunning four bedroom house  
moments from the King's Road and  
Chelsea Green

TRYON STREET  
CHELSEA SW3

Tryon Street

Let

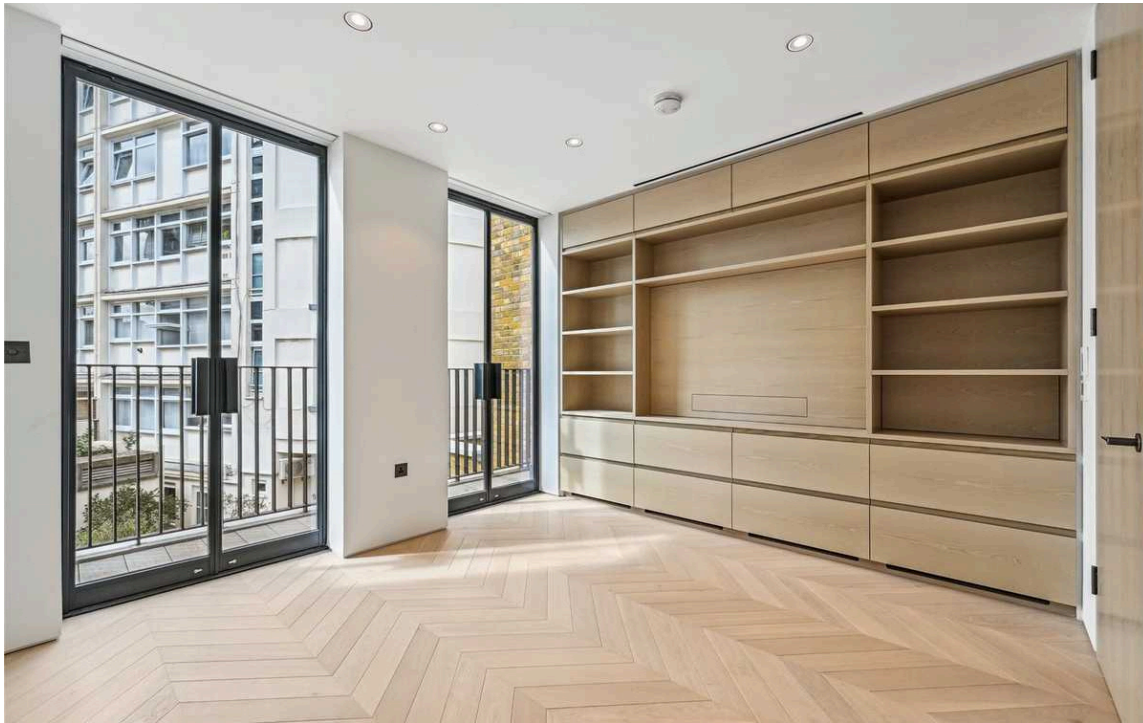
BEDROOMS 4	INTERNAL 1,550 SQ FT	OUTDOOR —	FURNISHED STATUS Unfurnished
BATHROOMS 4	143 SQM	EPC B	COUNCIL TAX RBKC, H



## The Property

Having recently been built and benefitting from state of the art specifications.





## Indoor Spaces

The property is eligible for an RBKC parking permit and can be rented unfurnished.

The property has been furnished with Poggenphol kitchens, C.P.Hart bathrooms with Roma marble, bespoke joinery from Ecosim and wooden flooring by Hakwood. The lavish house also benefits from broadband, SKY, Banham security, acoustically upgraded windows, underfloor heating, air conditioning and an MVHR system. The bespoke kitchen benefits from additional extras such as a double oven, wine fridge and island extraction fan.



# The Neighbourhood

The house is moments from the King's Road and Chelsea Green.



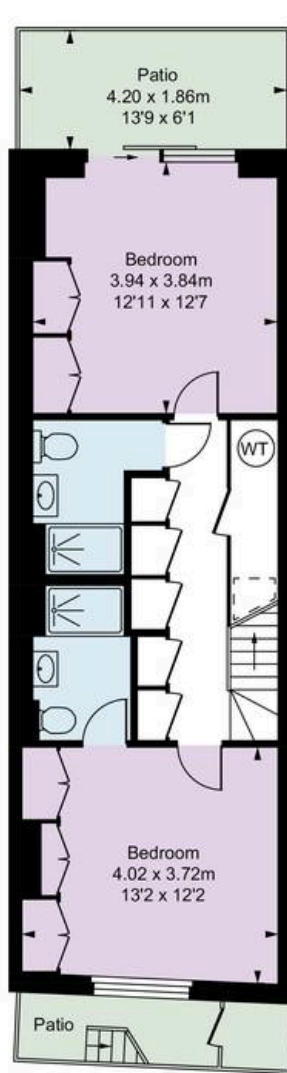
Tryon Street,  
SW3

**Approx Gross Internal Area**  
1,550 sq ft / 144.04 sq m

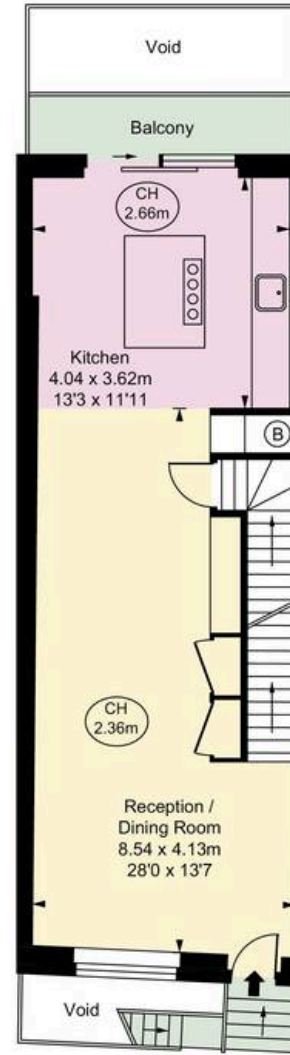
Including restricted height under 1.5m ( [ ] )  
CH = Ceiling Heights

**RUSSELL  
SIMPSON**

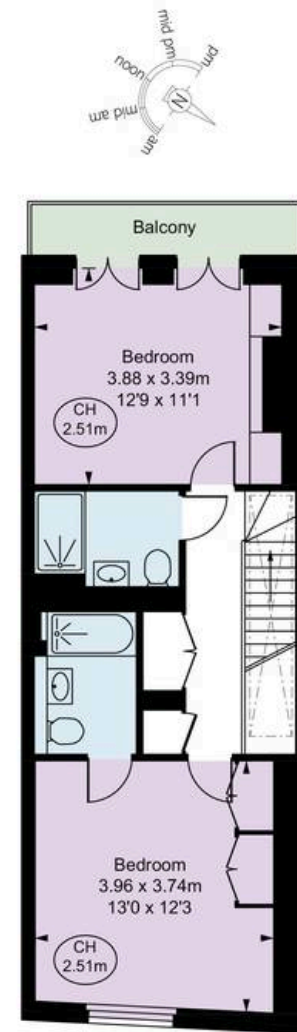
This plan is for layout guidance only. Not drawn to scale unless stated. Windows and door openings are approximate. Whilst every care is taken in the preparation of this plan. Please check all dimensions, shapes, and compass bearings before making any decisions reliant upon them.



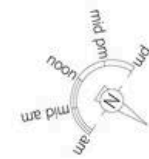
LOWER GROUND FLOOR



GROUND FLOOR



FIRST FLOOR



**RUSSELL  
SIMPSON**

---

## Contact Us

+44 (0) 20 7225 0277

Contact us

[info@russellsimpson.co.uk](mailto:info@russellsimpson.co.uk)

---

## Sydney Street

+44 (0) 20 7225 0277

151A Sydney Street

London

SW3 6NT

[chelsea@russellsimpson.co.uk](mailto:chelsea@russellsimpson.co.uk)

---

## Kensington Square

+44 (0) 20 3761 9691

13 Kensington Square

London

W8 5HD

[kensington@russellsimpson.co.uk](mailto:kensington@russellsimpson.co.uk)