



RUSSELL SIMPSON

Bright one-bedroom apartment near
Chelsea's King's Road

TRYON HOUSE
CHELSEA SW3

Tryon House

Let

BEDROOMS 1	INTERNAL 476 SQ FT	OUTDOOR —	FURNISHED STATUS Multiple Options
BATHROOMS 1	44 SQM	EPC C	COUNCIL TAX RBKC

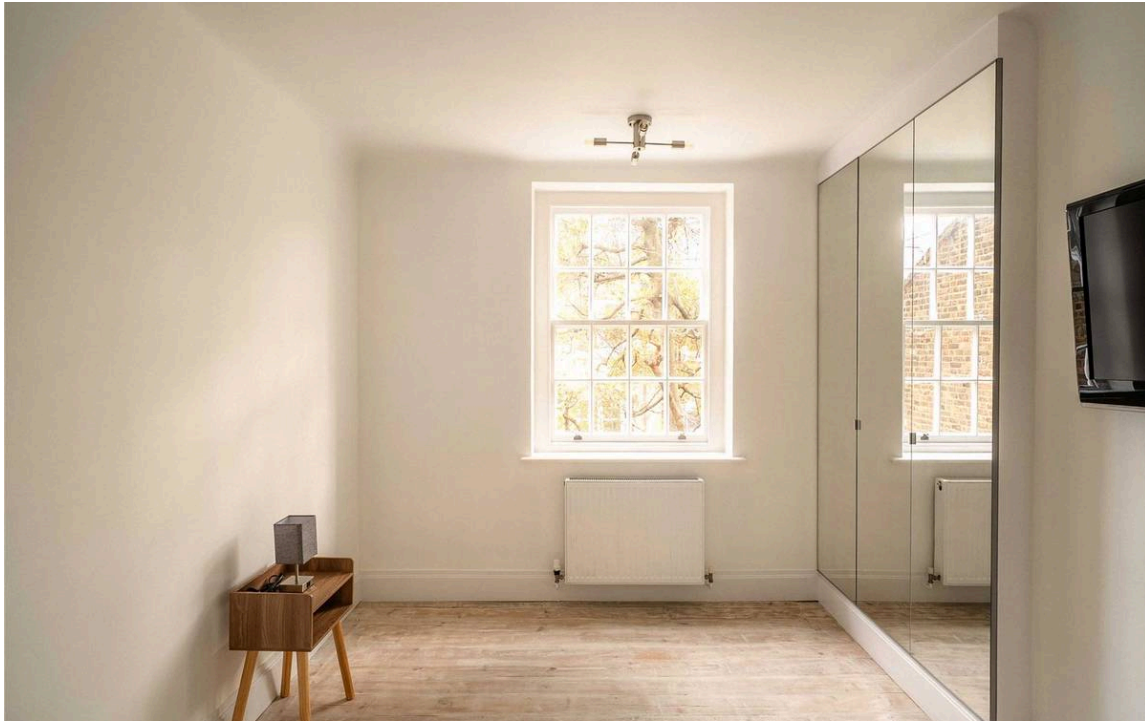


The Property

A beautifully designed apartment on the second floor.

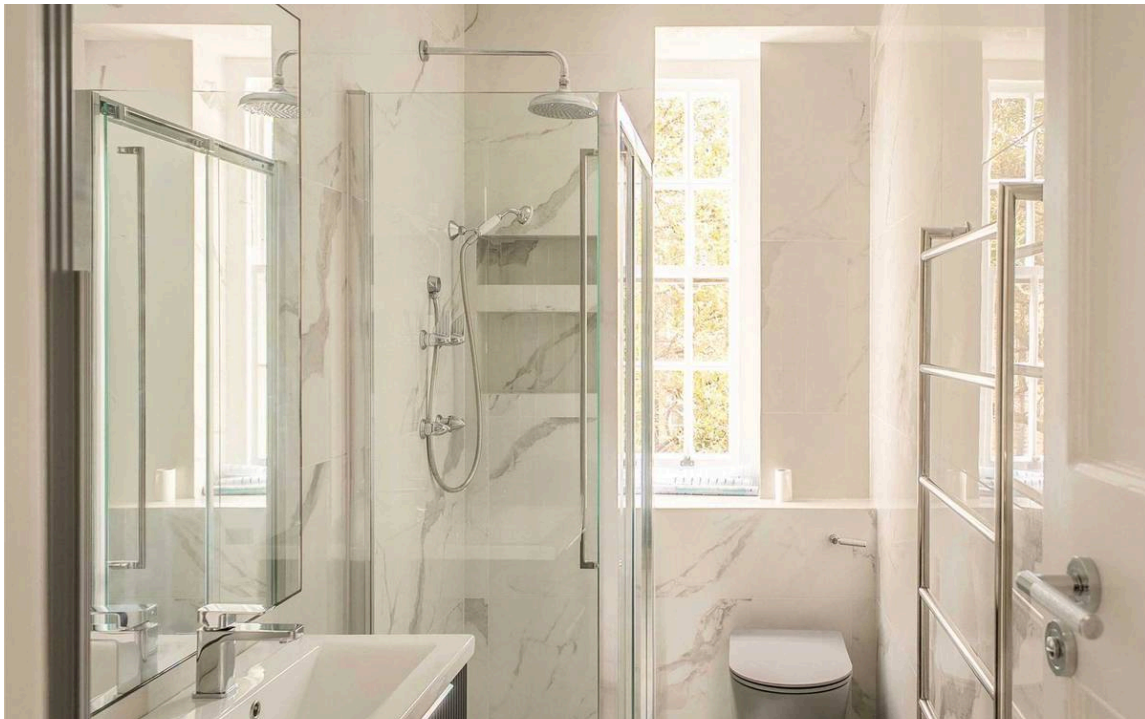
Entering the flat on the second floor, the reception room is generously proportioned with high ceilings that create a sense of scale. Two large windows fill the space with light, while the fireplace adds character and warmth. The room flows through to the kitchen, which features white fitted units with marble countertops and backsplash. A window above the sink provides natural light, and the space includes integrated appliances and an electric cooktop.





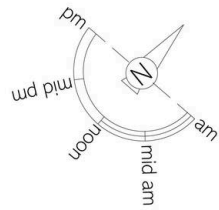
The Bedroom

The bedroom is well-proportioned with wooden floors and benefits from peaceful garden aspect through its window. Built-in mirrored wardrobes maximise storage while maintaining the room's sense of space. The separate bathroom is finished in light marble throughout.



The Neighbourhood

Mallord Street is a quiet residential address in the heart of Chelsea, moments away from the sophisticated boutiques and restaurants of King's Road. The area offers easy access to the open spaces of Battersea Park and the cultural attractions of South Kensington. Sloane Square underground station is within walking distance, providing excellent transport connections across London.



Tryon House, Mallord Street, SW₃

**RUSSELL
SIMPSON**

Approximate Internal Area
476 sq ft / 44 sq m

This plan is for layout guidance only. Not drawn to scale unless stated. Windows and door openings are approximate. Whilst every care is taken in the preparation of this plan, please check all dimensions, shapes, and compass bearings before making any decisions reliant upon them.



Second Floor

**RUSSELL
SIMPSON**

Contact Us

+44 (0) 20 7225 0277

151A Sydney Street
London
SW3 6NT

chelsea@russellsimpson.co.uk