



RUSSELL SIMPSON

Five-bedroom townhouse with
graceful interiors on a prestigious
square in South Kensington

THURLOE SQUARE
SOUTH KENSINGTON SW7

Thurloe Square

£7,450 P/W

BEDROOMS 5	INTERNAL 4,726 <small>SQ FT</small>	OUTDOOR 344 <small>SQ FT</small>	FURNISHED STATUS Unfurnished
BATHROOMS 4	439 <small>SQM</small>	EPC D	COUNCIL TAX RBKC, H

The Property

Beautifully preserved family home with lofty rooms and access to a communal garden square



img 1

Grand Entrance

img 2

Green Views



Indoor Spaces

Stepping into the house on the ground floor, the front door opens onto an impressive entrance hall. To one side is a dining room with high ceilings, a marble fireplace and a wide window. The dining room flows through to an informal front hallway, and beyond that a modern open-plan kitchen with a central island and marble worktops. Overhead skylights fill the breakfast area with brightness, while a pair of west-facing double French doors lead out onto the rear balcony.

The first floor features a spectacular double reception room with lofty ceilings and a pair of full-length French doors overlooking the garden square. The rear side of the room forms a library, with its own French door giving a double aspect. This floor also contains a garden-facing conservatory currently used as a home office.



img 1

Kitchen

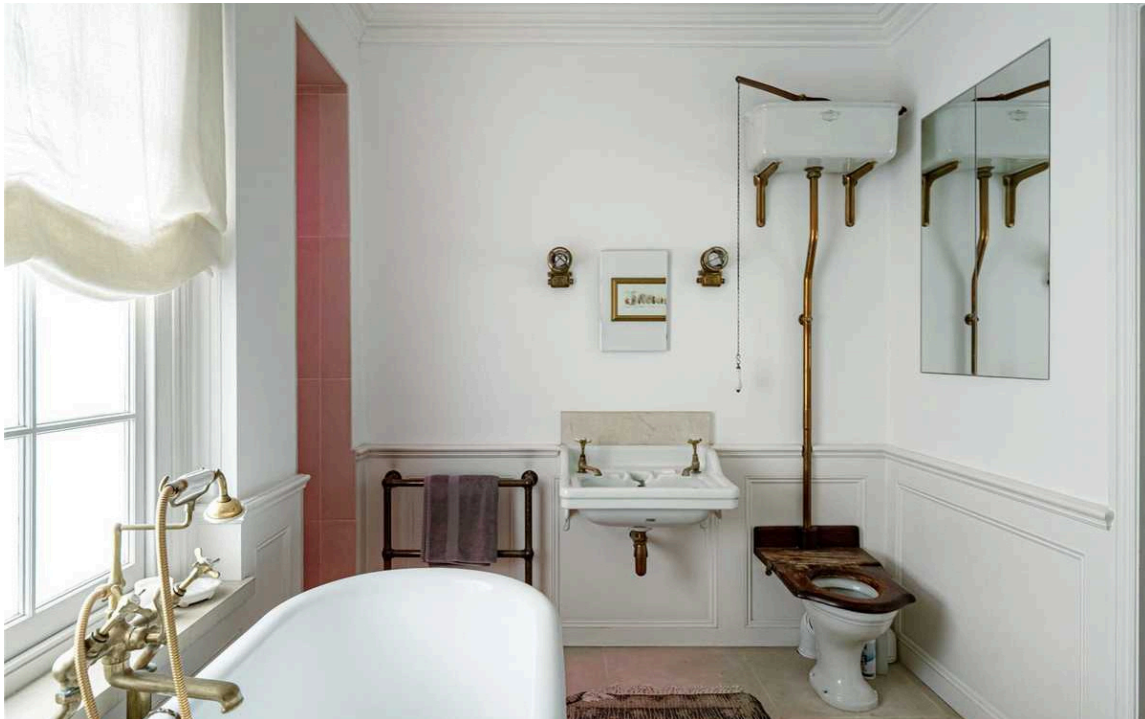
img 2

Living Area



The Bedrooms

The second floor is entirely occupied by the principal bedroom suite. This includes a bedroom, a walk-in wardrobe and a bathroom with a bath. The second floor features two more bedrooms, one of them ensuite, as well as a utility room. A large ensuite bedroom or games room, complete with storage space and kitchenette, occupies the third floor.





Entertaining Spaces

The lower ground floor centres on a generous family room with storage space and sliding French doors lead out into the garden. This floor also contains a gym, a bathroom, a bedroom and a storage vault. With separate street access, it could provide a self-contained flat.

The Design

The elegant interiors have preserved as many of the house's original features as possible, giving a sense of grandeur, history and refinement to the rooms.





The Neighbourhood & Outdoor Spaces

The property includes a paved west-facing garden with enough space for outdoor seating. Furthermore, there is a rear balcony on the ground floor with steps leading down to the garden, as well as front and rear balconies on the first floor. Finally, residents have keys to access the communal gardens opposite – one of the few garden squares with a children's play area and permission for dogs.

Thurloe Square is a highly sought-after garden square close to South Kensington underground station. It was developed in the 1820s with houses mostly designed by George Basevi, a celebrated Victorian architect of the Gothic and Neoclassical styles. From here, the neighbourhood's many outstanding museums and cultural institutions are close. In addition, the shops and restaurants of Chelsea and Knightsbridge are a short walk away, along with the open spaces of Hyde Park and Kensington Gardens.



img 1

Views

Thurloe Square,
SW7

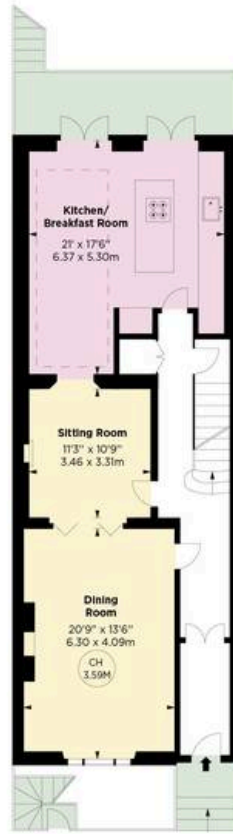
Approx Gross Internal Area
4,726 sq ft / 439.05 sq m

**RUSSELL
SIMPSON**

This plan is for layout guidance only. Not drawn to scale unless stated. Windows and door openings are approximate. Whilst every care is taken in the preparation of this plan. Please check all dimensions, shapes, and compass bearings before making any decisions reliant upon them.



LOWER GROUND FLOOR



GROUND FLOOR



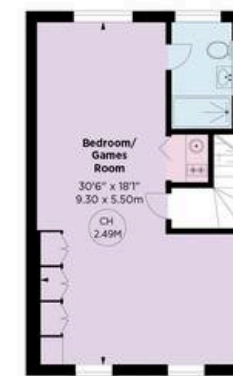
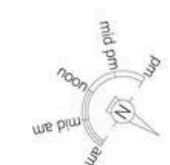
FIRST FLOOR



SECOND FLOOR



THIRD FLOOR



FOURTH FLOOR

**RUSSELL
SIMPSON**

Contact Us

+44 (0) 20 7225 0277

Contact us

info@russellsimpson.co.uk

Sydney Street

+44 (0) 20 7225 0277

151A Sydney Street

London

SW3 6NT

chelsea@russellsimpson.co.uk

Kensington Square

+44 (0) 20 3761 9691

13 Kensington Square

London

W8 5HD

kensington@russellsimpson.co.uk