



RUSSELL SIMPSON

Charming five-bedroom house with
south-facing garden to rent in
Shepherd's Bush

THORNFIELD ROAD
SHEPHERDS BUSH W12

Thornfield Road

£2,750 P/W

BEDROOMS 5	INTERNAL 3,341 <small>SQ FT</small>	OUTDOOR 885 <small>SQ FT</small>	FURNISHED STATUS Furnished
BATHROOMS 3	310 <small>SQM</small>	EPC D	COUNCIL TAX LBHF, G

The Property

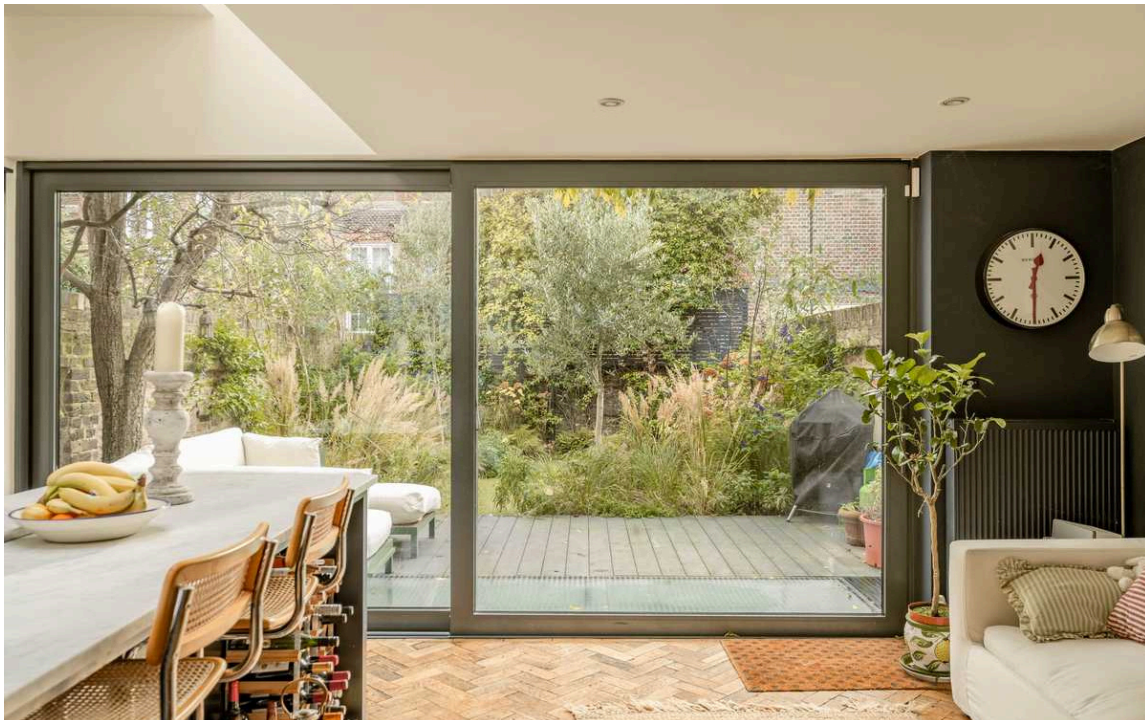
Bright and spacious family home with colourfully decorated interiors on a quiet but convenient street

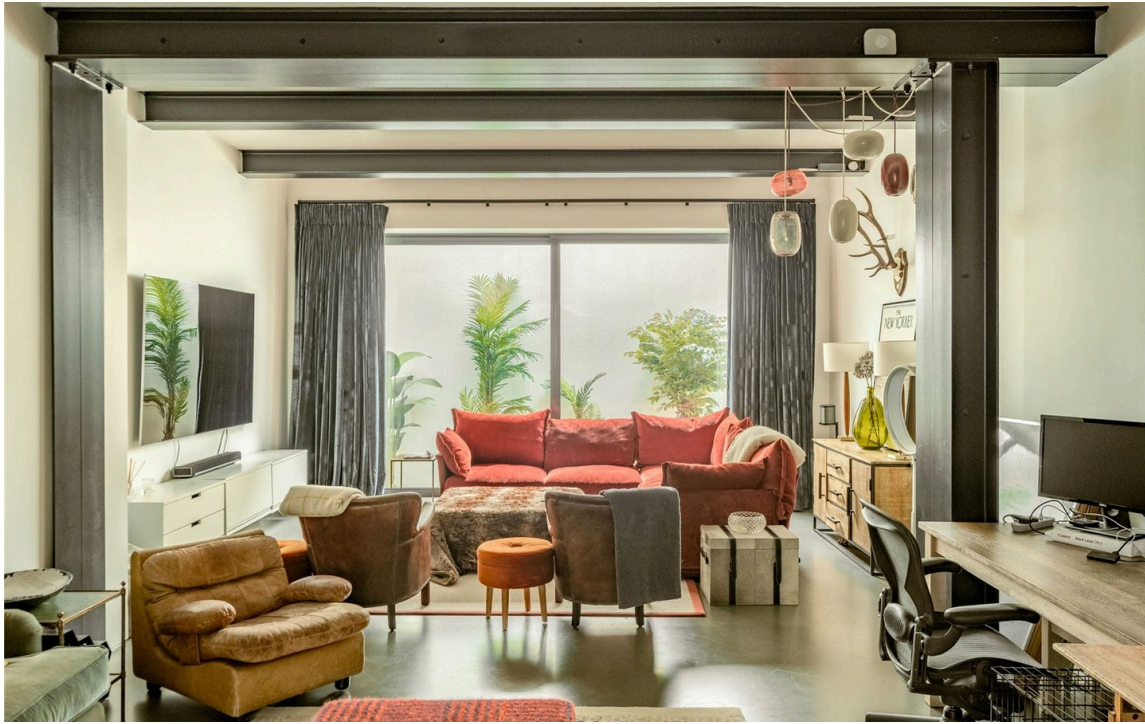




Indoor Spaces

Stepping into the house on the ground floor, the front hall leads into a spacious living area. This includes a central dining room, flowing through to a front reception room with high ceilings, panelled walls and wooden floors. On the other side is an open-plan kitchen with fitted units and sliding French doors that open out into the garden. Floor-to-ceiling glass windows and an overhead skylight bring added brightness into this space.





Entertaining Spaces

The lower ground floor is entirely occupied by a generous and lofty reception room. French doors at the front and rear open onto patio spaces and provide added daylight. The space is currently used as a gym, family room and work area, with a guest WC and utility cupboard giving added flexibility.



Principal Bedroom

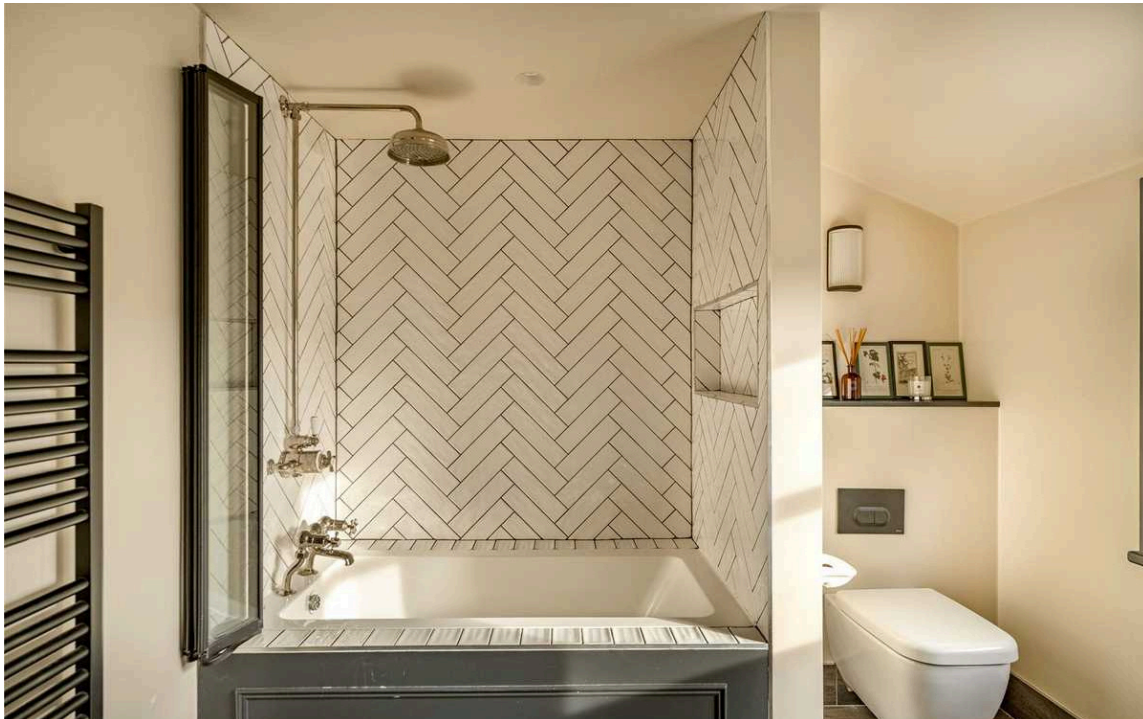
The first floor contains a well-proportioned principal bedroom suite, including a bathroom with a bath, a wide bay window and considerable storage space.





Further Bedrooms

On the half-landing is another bedroom with a bathroom next door. The second floor features three more bedrooms, with a bathroom and a utility cupboard on the half-landing.



The Design

The house is presented in good condition. Parquet wooden flooring in the living areas and colourful bedrooms upstairs add to the sense of comfort and charm.





Outdoor Spaces

The property includes a generous south-facing garden. It offers wooden decking with enough space for outdoor seating, as well as a lawn and planted borders. The house is also set back from the street with a front garden giving added privacy.



The Neighbourhood

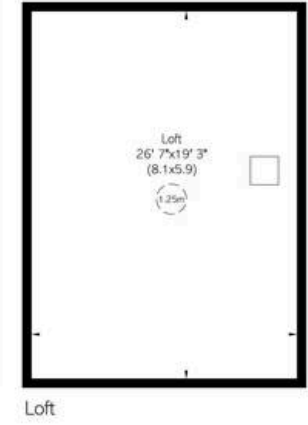
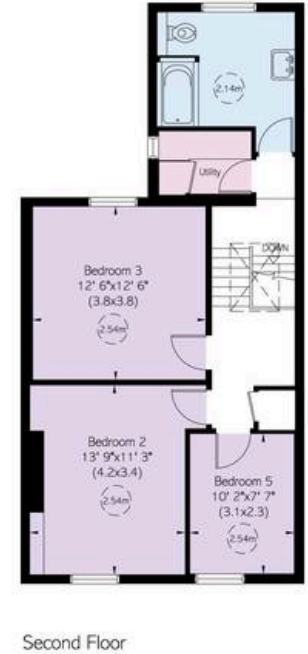
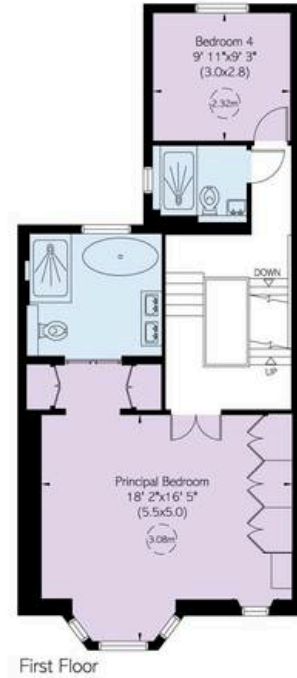
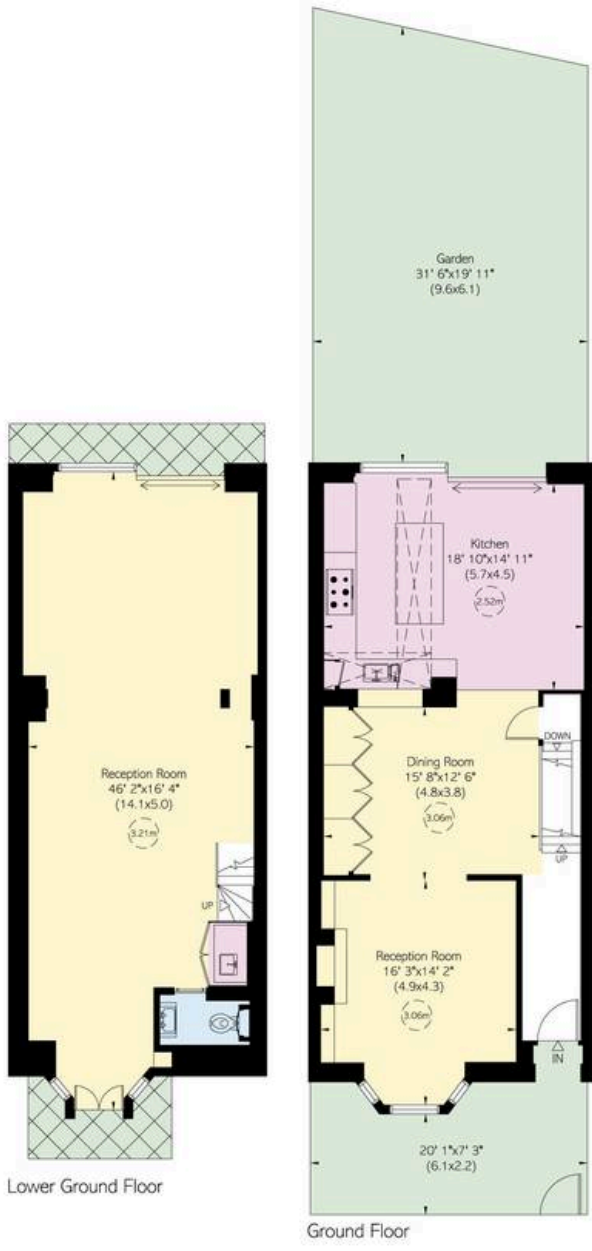
Thornfield Road is a quiet residential street in Shepherd's Bush. From here, Shepherd's Bush underground station is close, while Goldhawk Road overground station is also nearby. In addition, the Westfield shopping centre is a short walk away.

Thornfield Road, W12

**RUSSELL
SIMPSON**

Approximate Internal Area
3,374 sq ft / 310 sq m
Including limited use area and loft
511 sq ft / 47 sq m
Outside Area
885 sq ft / 82 sq m

This plan is for layout guidance only. Not drawn to scale unless stated. Windows and door openings are approximate. While every care is taken in the preparation of this plan, please check all dimensions, shapes, and compass bearings before making any decisions reliant upon them.



**RUSSELL
SIMPSON**

Contact Us

+44 (0) 20 7225 0277

Contact us

info@russellsimpson.co.uk

Sydney Street

+44 (0) 20 7225 0277

151A Sydney Street

London

SW3 6NT

chelsea@russellsimpson.co.uk

Kensington Square

+44 (0) 20 3761 9691

13 Kensington Square

London

W8 5HD

kensington@russellsimpson.co.uk