

## **RUSSELL SIMPSON**

Newly decorated West End flat with  
south-facing balcony to rent

HARLEQUIN COURT  
COVENT GARDEN WC2E

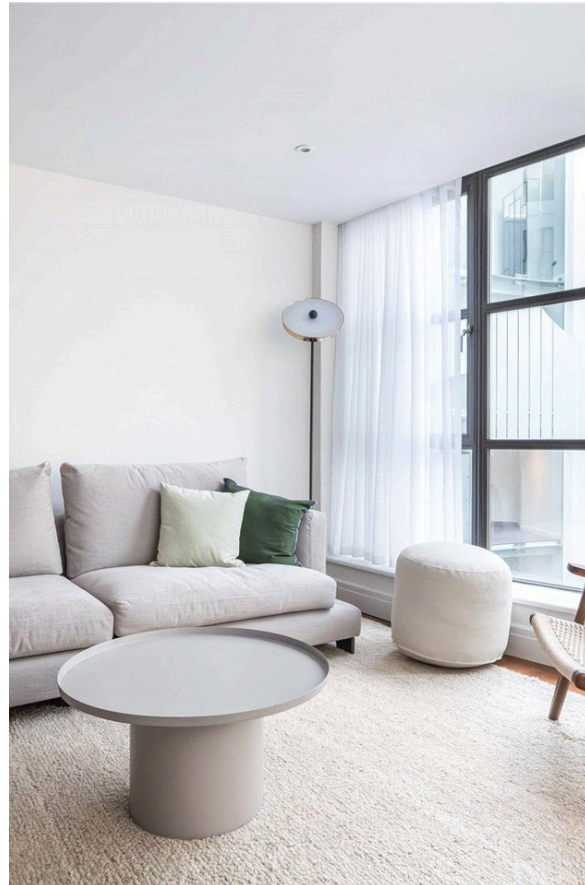
# Harlequin Court

# Let

|                |                                      |              |                                    |
|----------------|--------------------------------------|--------------|------------------------------------|
| BEDROOMS<br>2  | INTERNAL<br>929 <small>SQ FT</small> | OUTDOOR<br>— | FURNISHED STATUS<br>Furnished      |
| BATHROOMS<br>2 | 86 <small>SQM</small>                | EPC<br>C     | COUNCIL TAX<br>Westminster City, G |

# The Property

Two bedroom flat with contemporary interiors moments away from Covent Garden Piazza



---

img 1

Kitchen

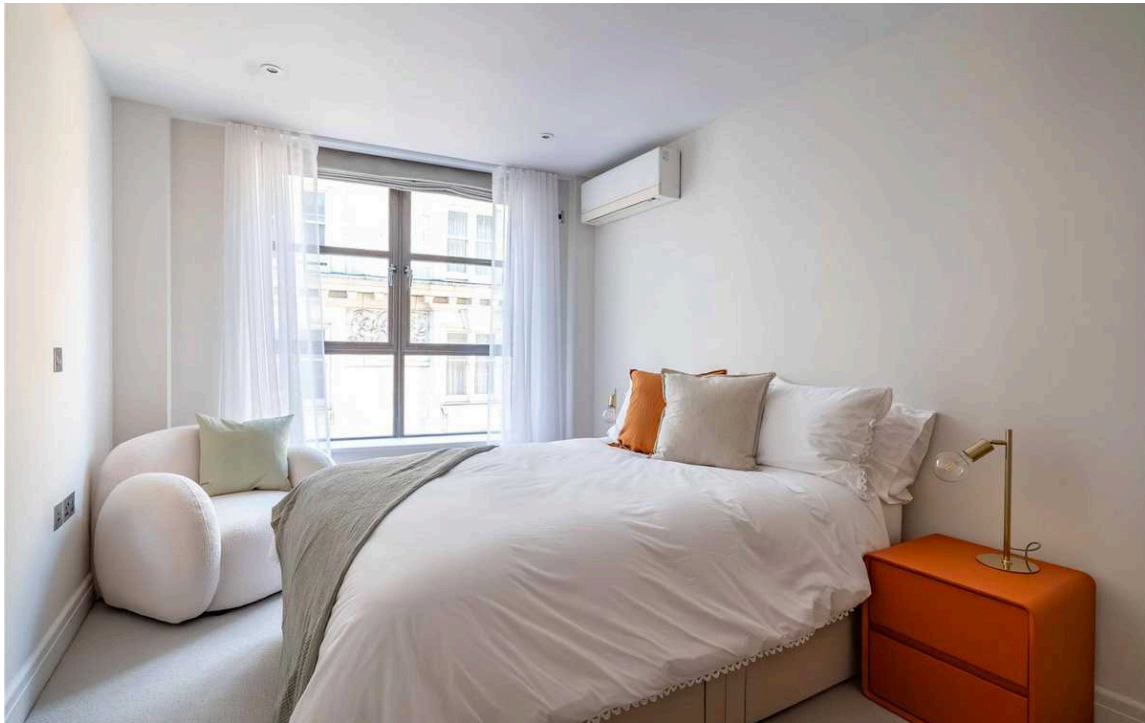
img 2

Reception Room



## Indoor Spaces

Entering the flat on the third floor, the front hall leads through to a well-proportioned reception room. As well as an open-plan kitchen with a breakfast bar, this room contains separate dining and seating areas. In addition, floor-to ceiling windows fill the space with light and open onto the balcony.



## The Bedrooms

The property also contains a pair of bedrooms and a pair of bathrooms, as well as a walk-in wardrobe. It has been decorated in a stylish contemporary fashion, with a new kitchen, carpet and furniture.

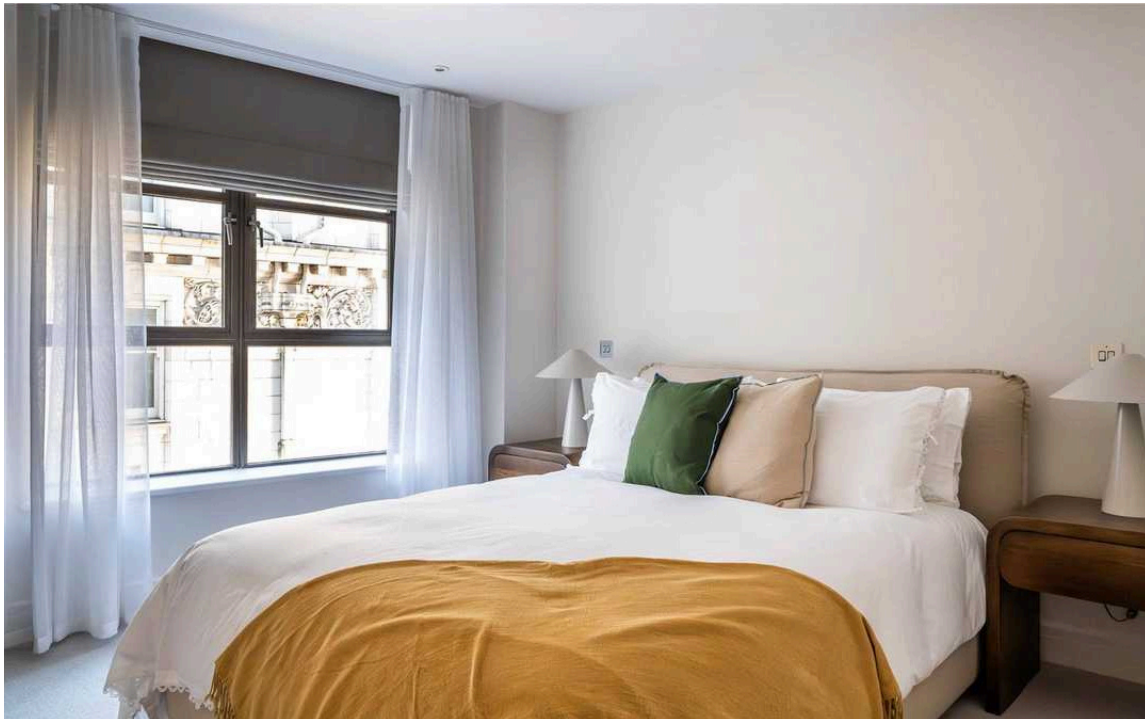
---

img 1

Double Bedroom

img 2

Double Bedroom





## Outdoor Spaces

The property includes south-facing balcony.



## The Neighbourhood

Harlequin Court is an impressive building in the heart of London's West End with a lift and a daytime porter. From here, Covent Garden piazza is a short walk away, along with the neighbourhood's many restaurants and shops. In addition, the world-class theatre district is close, and the many cultural offerings to be found in the centre of the capital.

---

img 1

Exterior

img 2

Covent Garden



Harlequin Court,  
Tavistock Street, WC2

**Approx Gross Internal Area**  
929 sq ft / 86 sq m

**RUSSELL  
SIMPSON**

This plan is for layout guidance only. Not drawn to scale unless stated. Windows and door openings are approximate. Whilst every care is taken in the preparation of this plan. Please check all dimensions, shapes, and compass bearings before making any decisions reliant upon them.



THIRD FLOOR



**RUSSELL  
SIMPSON**

---

## Contact Us

+44 (0) 20 3761 9691

13 Kensington Square  
London  
W8 5HD

[kensington@russellsimpson.co.uk](mailto:kensington@russellsimpson.co.uk)