



**RUSSELL  
SIMPSON**

Beautiful two-bedroom flat with  
colourful interiors close to  
Portobello Road to rent

TAVISTOCK ROAD  
NOTTING HILL W11

Tavistock Road

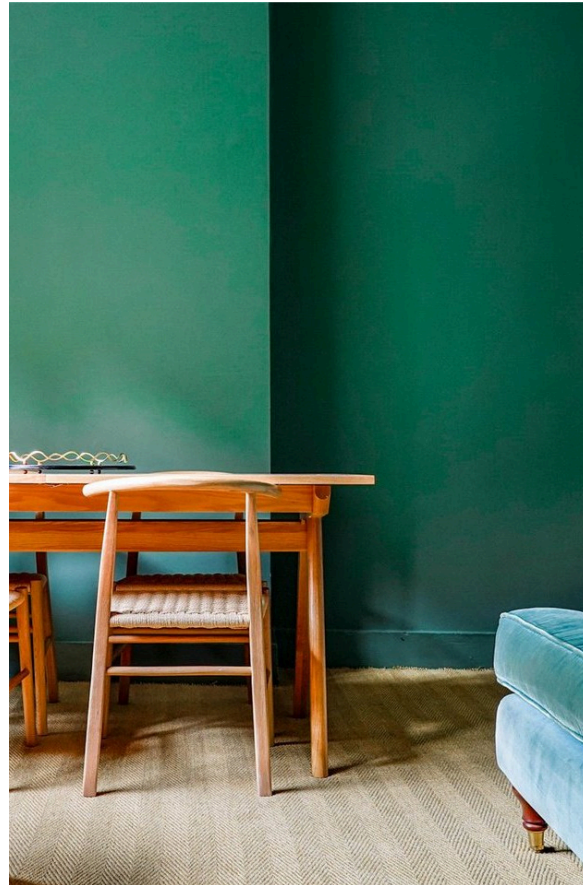
Let

BEDROOMS 2	INTERNAL 668 SQ FT	OUTDOOR —	FURNISHED STATUS Furnished / Part Furnished
BATHROOMS 1	62 SQM	EPC C	COUNCIL TAX RBKC, D

# The Property

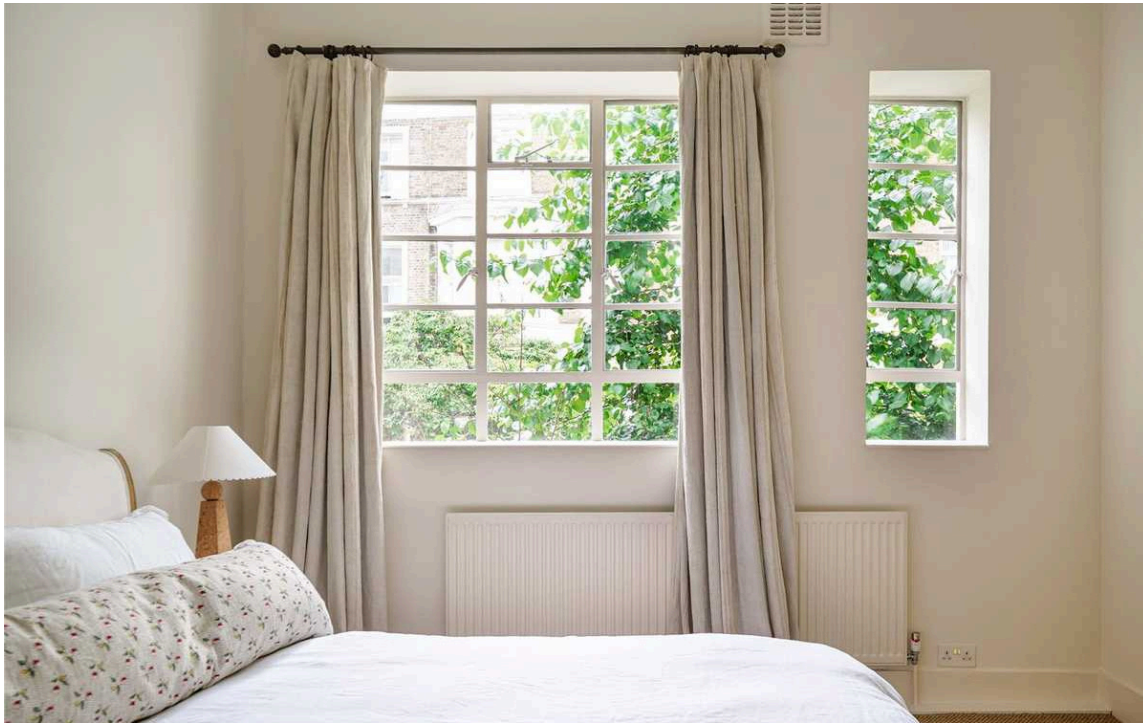
Recently refurbished flat with stylish rooms on a quiet street near Westbourne Park station

Entering the flat on the first floor, the front hall leads through to a well-proportioned reception room. As well as inbuilt shelving units, this room has enough space for separate dining and seating areas. Next door is a convenient fitted kitchen with tasteful tiles and modern units.



img 2

Living Area



## The Bedrooms

The flat has been recently refurbished and decorated in a colourful contemporary style. It is part of a stylish building with wide windows and a stucco facade.

The other side of the flat features a pair of bright and graceful bedrooms sharing a bathroom. The principal bedroom has considerable storage space, while the bathroom opposite features both shower and a bath.

---

img 1

Principal Bedroom

---

img 2

Bathroom





## The Neighbourhood

Tavistock Road is a quiet, tree-lined street moments away from Portobello Road. From here, the many restaurants and shops of Notting Hill are within walking distance. In addition, Westbourne Park station is close, while the Grand Union canal is also nearby, with its popular towpath for walking and running.

# Tavistock Road, W11

**RUSSELL  
SIMPSON**

**Approximate Internal Area**  
668 sq ft / 62 sq m

This plan is for layout guidance only. Not drawn to scale unless stated. Windows and door openings are approximate. Whilst every care is taken in the preparation of this plan, please check all dimensions, shapes, and compass bearings before making any decisions reliant upon them.



First Floor

**RUSSELL  
SIMPSON**

---

## Contact Us

+44 (0) 20 7225 0277

Contact us

[info@russellsimpson.co.uk](mailto:info@russellsimpson.co.uk)

---

## Sydney Street

+44 (0) 20 7225 0277

151A Sydney Street

London

SW3 6NT

[chelsea@russellsimpson.co.uk](mailto:chelsea@russellsimpson.co.uk)

---

## Kensington Square

+44 (0) 20 3761 9691

13 Kensington Square

London

W8 5HD

[kensington@russellsimpson.co.uk](mailto:kensington@russellsimpson.co.uk)