



## **RUSSELL SIMPSON**

Stylish one bedroom flat to rent on a  
central Chelsea street

SYDNEY STREET  
CHELSEA SW3

Sydney Street

£875 P/W

<div>BEDROOMS</div> <div>1</div>	<div>INTERNAL</div> <div>611 <small>SQ FT</small></div> <div>56 <small>SQM</small></div>	<div>OUTDOOR</div> <div>70 <small>SQ FT</small></div>	<div>FURNISHED STATUS</div> <div>Furnished</div>
<div>BATHROOMS</div> <div>1</div>		<div>EPC</div> <div>D</div>	<div>COUNCIL TAX</div> <div>RBKC, E</div>

# The Property

Ground-floor flat with contemporary interiors and outdoor space close to the Fulham Road

Entering the flat on the lower ground floor, the front hall leads through to a well-proportioned reception room. This room has enough space for separate dining and seating areas, and opens directly onto the kitchen.





## Indoor Spaces

The flat also contains a bedroom with built-in storage. In addition, there is a generous bathroom with shower, bath and a pair of sinks. It is presented in very good condition with wooden floors throughout.

img 1

Dining Area

img 2

Double Bedroom







## Outdoor Spaces

Double French doors open onto a patio with space for outdoor dining. In addition, the property has its own front door giving separate street access.



## The Neighbourhood

Sydney Street is a well-positioned street in Chelsea, leading from the King's Road to the Fulham Road. St Luke's Church lies midway along the street, surrounded by gardens a large green, providing one of the most beautiful Gothic Revival churches in London.

From here, both Sloane Square and South Kensington underground stations are a short walk away. In addition, Chelsea Common, with its boutique shops and independent cafes, is within easy reach.

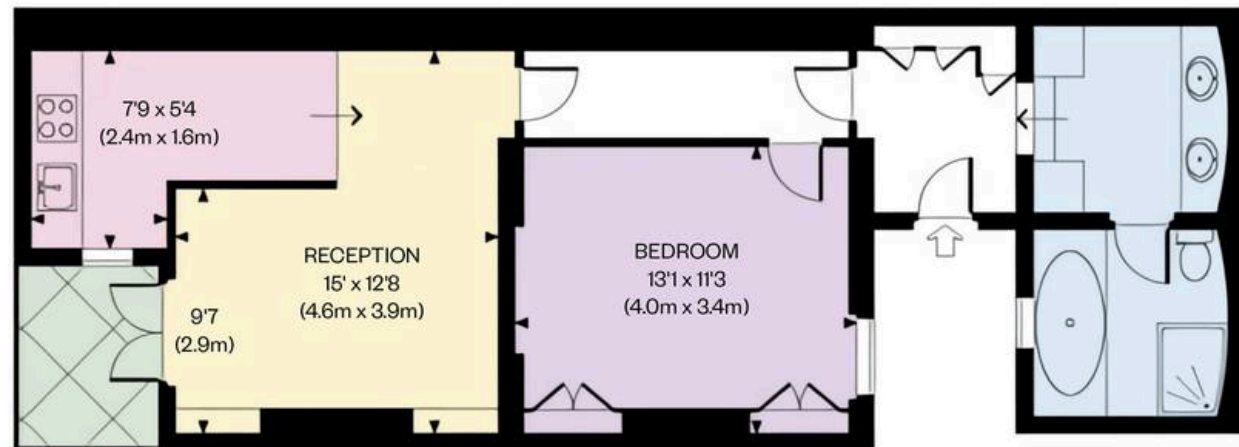
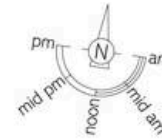
Sydney Street,  
SW3

**Approx Gross Internal Area**

611 sq ft / 57 sq m

**RUSSELL  
SIMPSON**

This plan is for layout guidance only. Not drawn to scale unless stated. Windows and door openings are approximate. Whilst every care is taken in the preparation of this plan. Please check all dimensions, shapes, and compass bearings before making any decisions reliant upon them.



LOWER GROUND FLOOR

**RUSSELL  
SIMPSON**

---

## Contact Us

+44 (0) 20 7225 0277

151A Sydney Street  
London  
SW3 6NT

[chelsea@russellsimpson.co.uk](mailto:chelsea@russellsimpson.co.uk)

In accordance with the Property Mis-Description Act 1991, the following details have been prepared in good faith, and are not intended to constitute part of an offer or contract. Any information contained herein (whether in the text, plans or photographs) is given in good faith but should not be relied upon as being a statement of representation of fact. Nothing in these Particulars shall be deemed to be a statement that the property is in good condition or otherwise nor that any services or facilities are in good working order. Any measurements of distances referred to herein are approximate only. October 2021