



RUSSELL SIMPSON

A beautifully finished one-bedroom
apartment presented in excellent
condition

STRATOTTON STREET
MAYFAIR W1J

Stratotton Street

Let

BEDROOMS 1	INTERNAL 560 _{SQ FT}	OUTDOOR —	FURNISHED STATUS Furnished
BATHROOMS 1	52 _{SQM}	EPC C	COUNCIL TAX Westminster City, H



The Property

Entering the flat, you are met with a delightful reception room that fills the space with light through generous windows. The semi open-plan kitchen features fitted units with integrated appliances, cleverly positioned to flow with the main living area.

img 1

Seating Space

img 2

Dining Spot



The Bedroom



The Neighbourhood

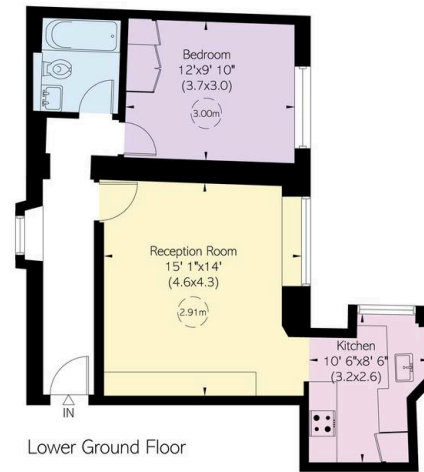
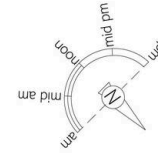
Stratton Street is an attractive address in the heart of Mayfair, moments away from the renowned shopping of Bond Street and Oxford Street. The location offers excellent transport links and is within walking distance of Green Park, providing easy access to both the West End's cultural attractions and the tranquil green spaces of central London.



Stratton Street, W1

Approximate Internal Area
560 sq ft/ 52 sq m

RUSSELL SIMPSON



Lower Ground Floor

This plan is for layout guidance only.
Not drawn to scale unless stated. Windows
and door openings are approximate. Whilst
every care is taken in the preparation of this
plan, please check all dimensions, shapes,
and compass bearings before making any
decisions reliant upon them.

**RUSSELL
SIMPSON**

Contact Us

+44 (0) 203 815 9144

mayfair@russellsimpson.co.uk

In accordance with the Property Mis-Description Act 1991, the following details have been prepared in good faith, and are not intended to constitute part of an offer or contract. Any information contained herein (whether in the text, plans or photographs) is given in good faith but should not be relied upon as being a statement of representation of fact. Nothing in these Particulars shall be deemed to be a statement that the property is in good condition or otherwise nor that any services or facilities are in good working order. Any measurements of distances referred to herein are approximate only. October 2021