



## **RUSSELL SIMPSON**

Bright and beautiful newly  
refurbished one-bedroom flat to rent  
near Kensington High Street

STAFFORD TERRACE  
KENSINGTON W8

# Stafford Terrace

£980 P/W

BEDROOMS 1	INTERNAL 566 <small>SQ FT</small>	OUTDOOR —	FURNISHED STATUS Furnished
BATHROOMS 1	52 <small>SQM</small>	EPC E	COUNCIL TAX RBKC, F



## The Property

Conveniently located flat with light-filled interiors on a prestigious street close to Holland Park

The flat has been newly refurbished and is presented in excellent condition throughout. Wooden floors and contemporary interiors increase the sense of light and space.

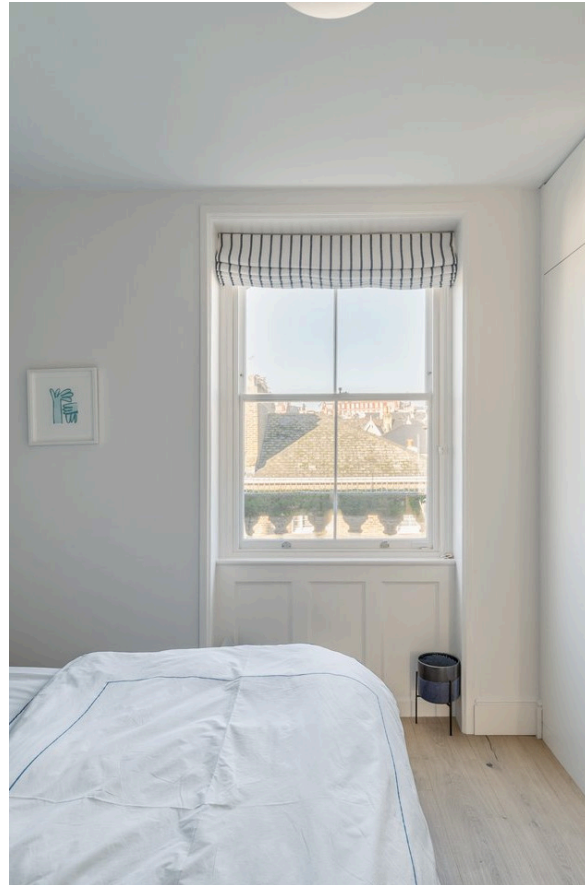
## Indoor Spaces

Stepping into the flat on the third floor, the entrance hall leads into a well-proportioned reception room. The seating area flows through to a dining area and open-plan kitchen with fitted units and stone worktops. Meanwhile, south-east facing sash windows and an internal window add to the brightness of the space.



## The Bedroom

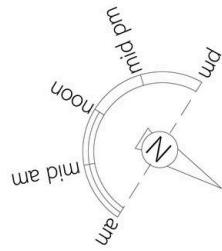
The other side of the flat features a bedroom with stairs leading up to a walk-in wardrobe space. In between is a bathroom with a bath.





## The Neighbourhood

Stafford Terrace is an impressive street of half-stucco houses built in the late Victorian Era. The many restaurants and shops of Kensington High Street are close, along with the underground station. In addition, the southern entrance to Holland Park is a short walk away.

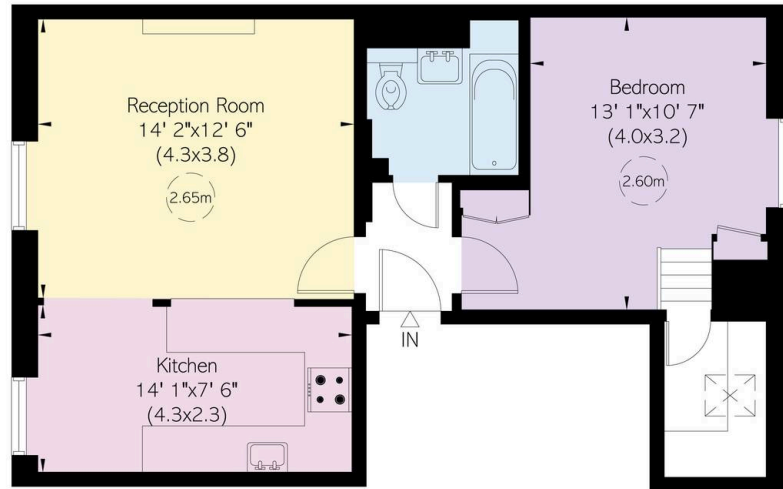


## Stafford Terrace, W8

**RUSSELL  
SIMPSON**

**Approximate Internal Area**  
566 sq ft / 53 sq m

This plan is for layout guidance only. Not drawn to scale unless stated. Windows and door openings are approximate. Whilst every care is taken in the preparation of this plan, please check all dimensions, shapes, and compass bearings before making any decisions reliant upon them.



Third Floor

**RUSSELL  
SIMPSON**

---

## Contact Us

+44 (0) 20 3761 9691

13 Kensington Square  
London  
W8 5HD

[kensington@russellsimpson.co.uk](mailto:kensington@russellsimpson.co.uk)