



RUSSELL SIMPSON

Recently renovated two-three
bedroom house close to Kensington
Gardens to rent

ST PETERSBURGH MEWS
BAYSWATER W2

St Petersburg Mews

£1,900 P/W

BEDROOMS 2-3	INTERNAL 1,293 <small>SQ FT</small>	OUTDOOR —	FURNISHED STATUS Furnished
BATHROOMS 2	120 <small>SQM</small>	EPC C	COUNCIL TAX Westminster City, F



The Property

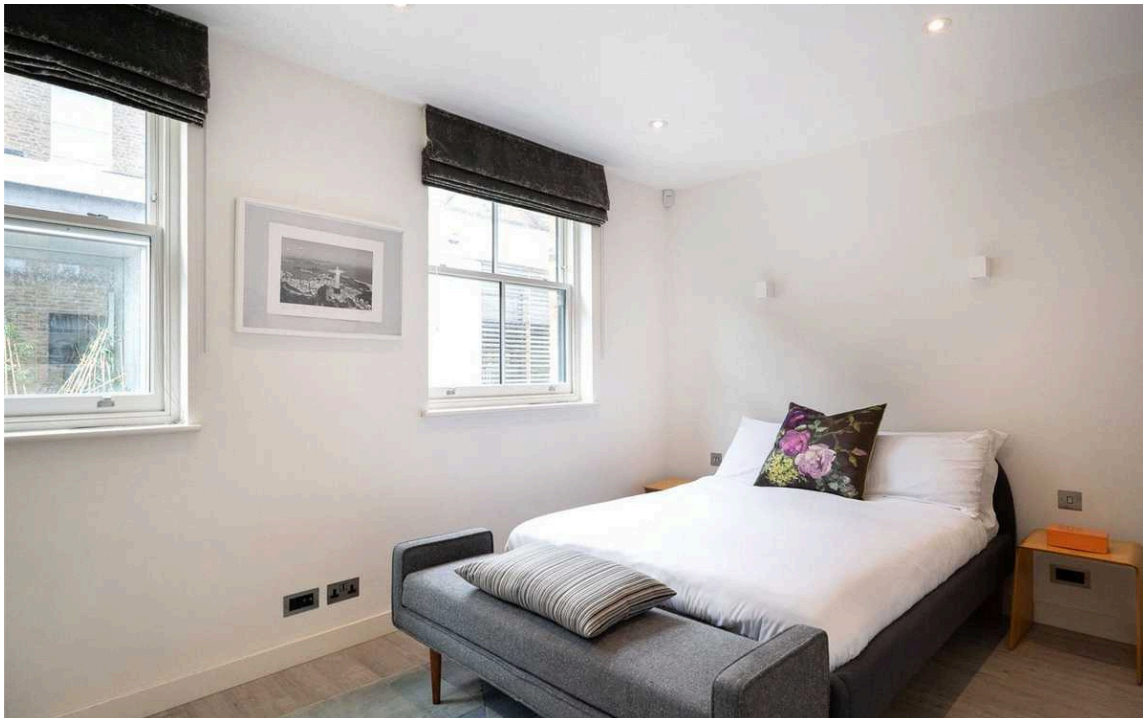
Stylish property with contemporary interiors on a picturesque mews street in Bayswater

The house has been recently renovated with stylish modern interiors and underfloor heating. The careful design and minimalist aesthetic provide a feeling of light and space throughout.



Indoor Spaces

Entering the house on the ground floor, the front hall leads through to an open-plan kitchen. As well as a fitted kitchen, this room contains a central island with breakfast bar and a dining area. Upstairs, the first floor offers two bedrooms, with a shared bathroom and a guest WC.





Entertaining Spaces

Downstairs is a generous reception room with a home cinema and considerable storage space. The far end of this room is partially separated with screens, providing a home office or guest bedroom. This floor also contains a bathroom with a shower.



The Neighbourhood

St Petersburgh Mews is a quiet mews running behind St Petersburgh Place. The cobble street is lined with picturesque brick properties, some of them painted pastel colours. From here Queensway and Bayswater stations are both close, and the area is also well-served by buses. In addition, the many restaurants and shops of Notting Hill are within easy reach. Finally, the open spaces of Kensington Gardens and Hyde Park are a short walk away.

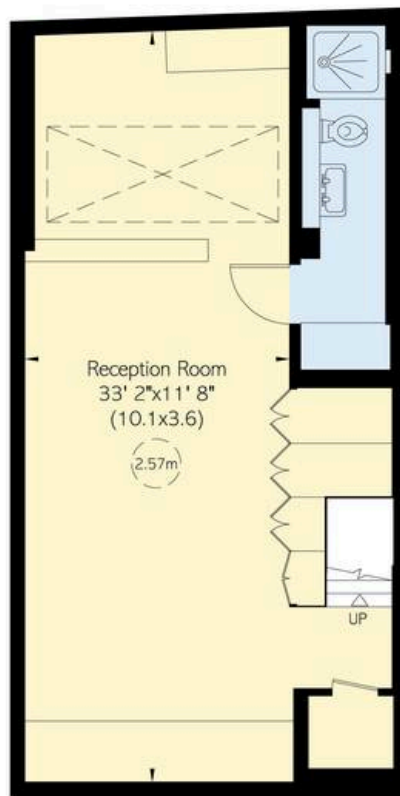
St. Petersburg Mews, W₂

**RUSSELL
SIMPSON**

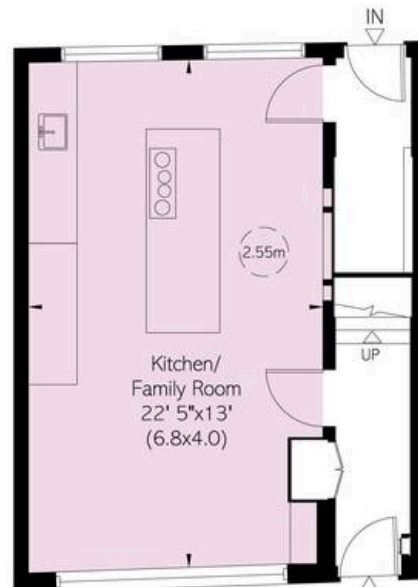
Approximate Internal Area

1,293 sq ft / 120 sq m

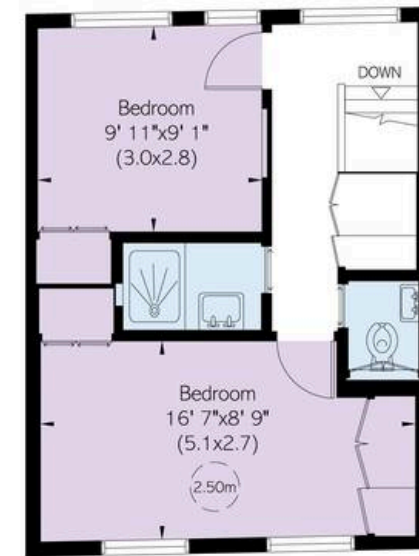
This plan is for layout guidance only. Not drawn to scale unless stated. Windows and door openings are approximate. Whilst every care is taken in the preparation of this plan, please check all dimensions, shapes, and compass bearings before making any decisions reliant upon them.



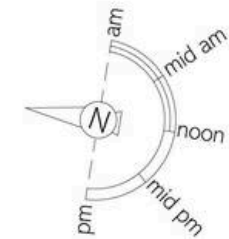
Basement



Ground Floor



First Floor



**RUSSELL
SIMPSON**

Contact Us

+44 (0) 20 7225 0277

Contact us

info@russellsimpson.co.uk

Sydney Street

+44 (0) 20 7225 0277

151A Sydney Street

London

SW3 6NT

chelsea@russellsimpson.co.uk

Kensington Square

+44 (0) 20 3761 9691

13 Kensington Square

London

W8 5HD

kensington@russellsimpson.co.uk