



RUSSELL SIMPSON

Sophisticated three-bedroom
apartment in a prestigious portered
building

ST MARYS ABBOTTS TERRACE
KENSINGTON W14

St Marys Abbotts Terrace

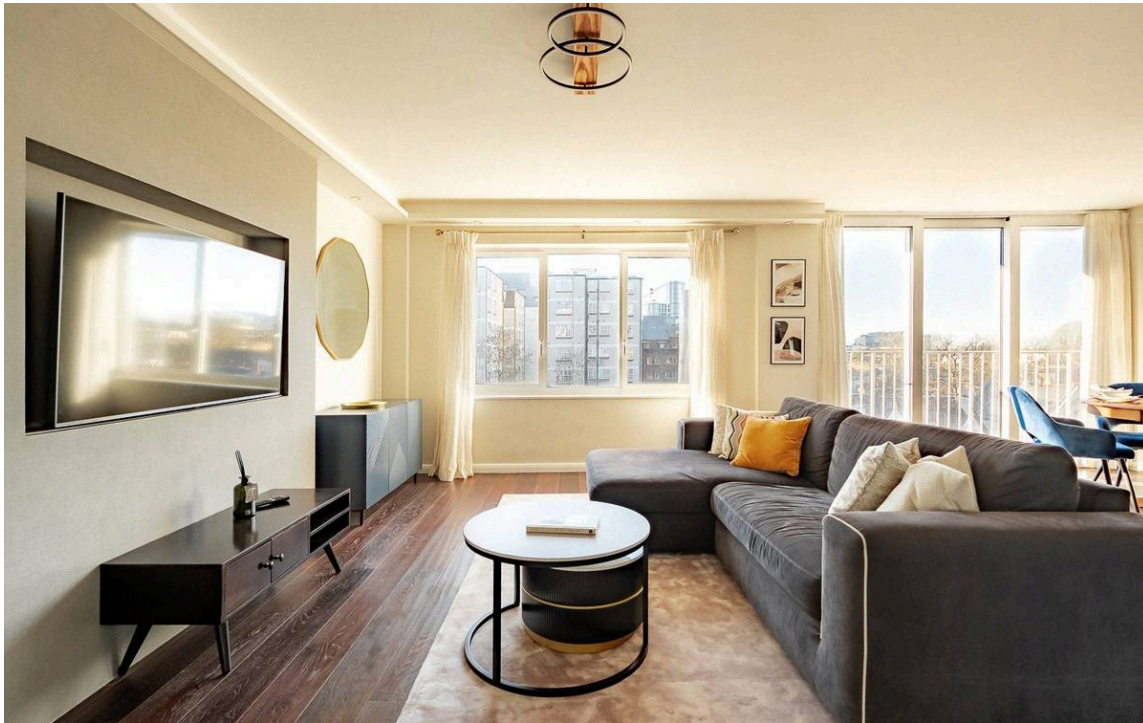
£1,327 P/W

<div>BEDROOMS</div> <div>3</div>	<div>INTERNAL</div> <div>1,227 <small>SQ FT</small></div> <div>113 <small>SQM</small></div>	<div>OUTDOOR</div> <div>16 <small>SQ FT</small></div>	<div>FURNISHED STATUS</div> <div>Furnished</div>
<div>BATHROOMS</div> <div>3</div>		<div>EPC</div> <div>C</div>	<div>COUNCIL TAX</div> <div>RBKC, G</div>



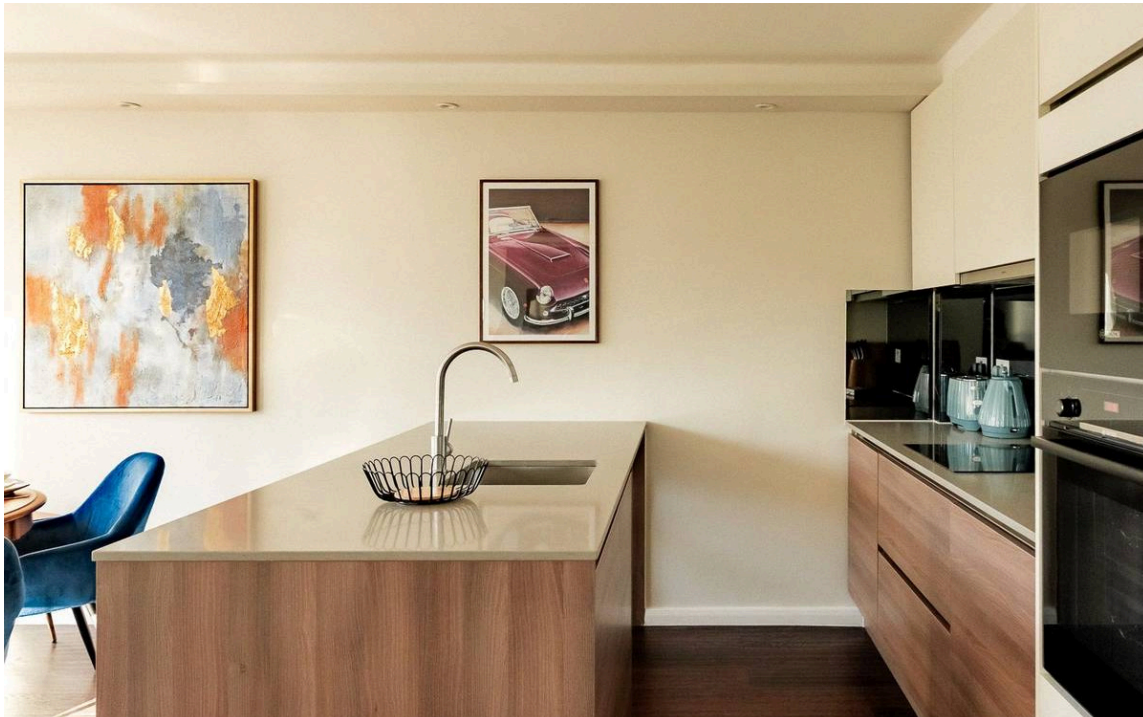
The Property

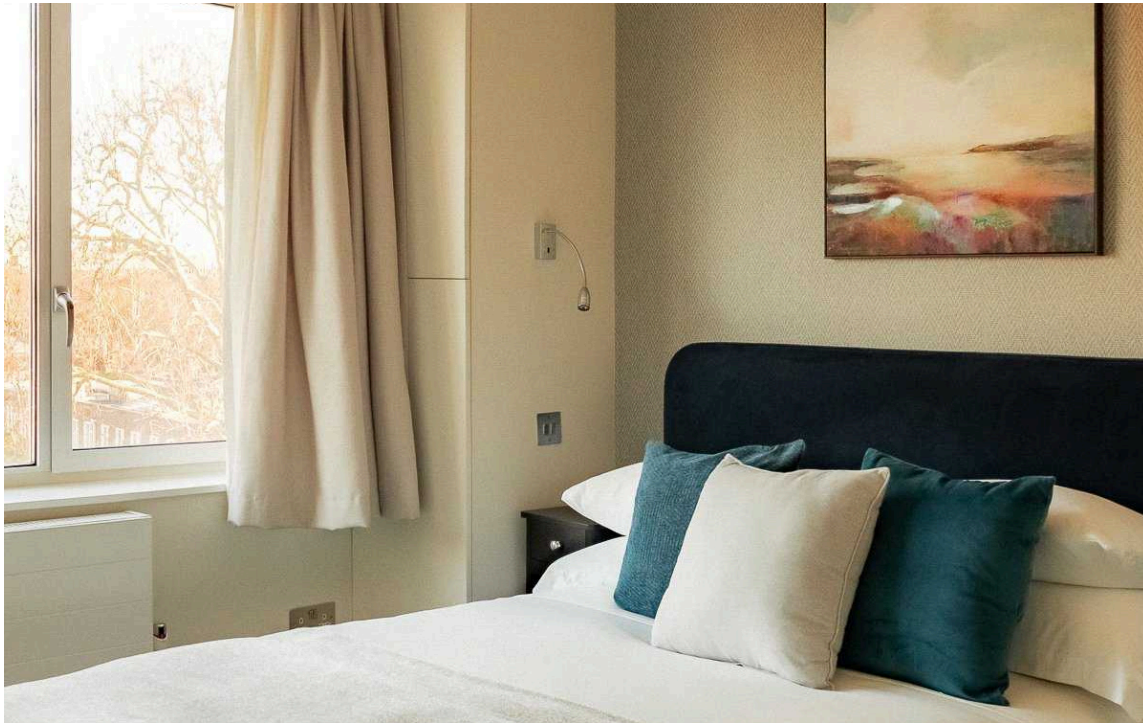
Beautifully designed fifth-floor apartment with lift, presented in superb condition.



Indoor Spaces

Entering the flat on the fifth floor, a welcoming entrance hall leads through to all accommodation. The heart of the apartment is the impressive open-plan kitchen and reception room, with lofty ceilings that create a wonderful sense of scale. The contemporary kitchen features sleek fitted units with a central island, integrated appliances, and a reflective backsplash that maximises light throughout the space. The reception area flows seamlessly from the kitchen, with large windows filling the room with natural light and offering pleasant views across the surrounding area.





The Bedrooms

The apartment comprises three well-proportioned bedrooms. The principal bedroom is exceptionally spacious and benefits from an ensuite bathroom, while the second bedroom also features its own ensuite facility. The third bedroom is equally well-sized and enjoys excellent natural light. All bedrooms feature fitted wardrobes with contemporary sliding doors, maximising storage while maintaining the apartment's refined aesthetic. A separate shower room serves the third bedroom and provides additional convenience for guests.





The Neighbourhood

St Mary Abbots Terrace is a quiet residential address in the heart of Kensington, moments away from the excellent shopping and dining opportunities of Kensington High Street. The location provides easy access to Holland Park's beautiful gardens and is within walking distance of Kensington Gardens and Hyde Park. High Street Kensington Underground station is a short walk away, providing excellent transport links via the District and Circle lines. The area is renowned for its elegant Victorian architecture and tree-lined streets, while nearby Kensington Church Street offers an array of antique shops and upmarket boutiques. The Royal Albert Hall and the cultural treasures of South Kensington's museums are all within easy reach, making this an exceptionally well-connected location in one of London's most prestigious areas.

Abbots House,
St Mary Abbot's Terrace,
W14

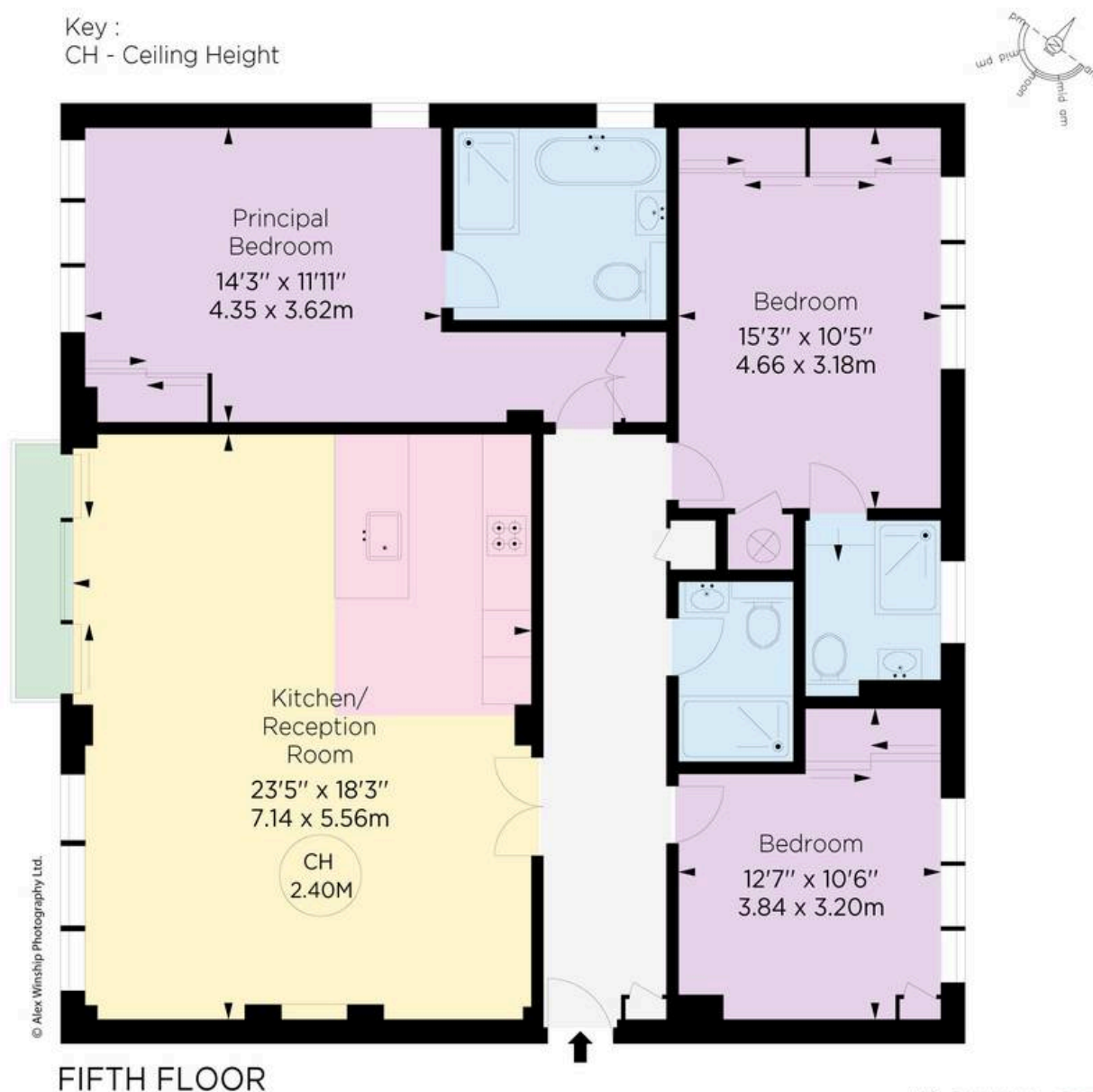
Approx. gross internal area
1227 Sq Ft / 114.08 Sq M

Approx. gross outdoor area
17 sq ft / 1.6 sq m

**RUSSELL
SIMPSON**

This plan is for layout guidance only.
Not drawn to scale unless stated. Whilst
every care is taken in the preparation of this
plan, please check all dimensions, shapes,
and compass bearings before making any
decisions reliant upon them.

Key :
CH - Ceiling Height



**RUSSELL
SIMPSON**

Contact Us

+44 (0) 20 3761 9691

13 Kensington Square
London
W8 5HD

kensington@russellsimpson.co.uk