



RUSSELL SIMPSON

Colourful two bedroom duplex flat
with garden to rent near Ladbroke
Grove station

ST CHARLES SQUARE
NORTH KENSINGTON W10

St Charles Square

£1,153 P/W

BEDROOMS 2	INTERNAL 906 <small>SQ FT</small>	OUTDOOR 222 <small>SQ FT</small>	FURNISHED STATUS Furnished
BATHROOMS 1	84 <small>SQM</small>	EPC C	COUNCIL TAX RBKC, F



The Property

Charming flat with creative interiors on a beautiful street close to Kensington Memorial Park

img 1

Double Reception

img 2

Dining Area



Indoor Spaces

Entering the flat on the ground floor, the front door opens onto a generous reception room with wooden floors and a high ceiling. The front half of the room is a seating area, the rear half is a dining area, with a fitted kitchen on one side.

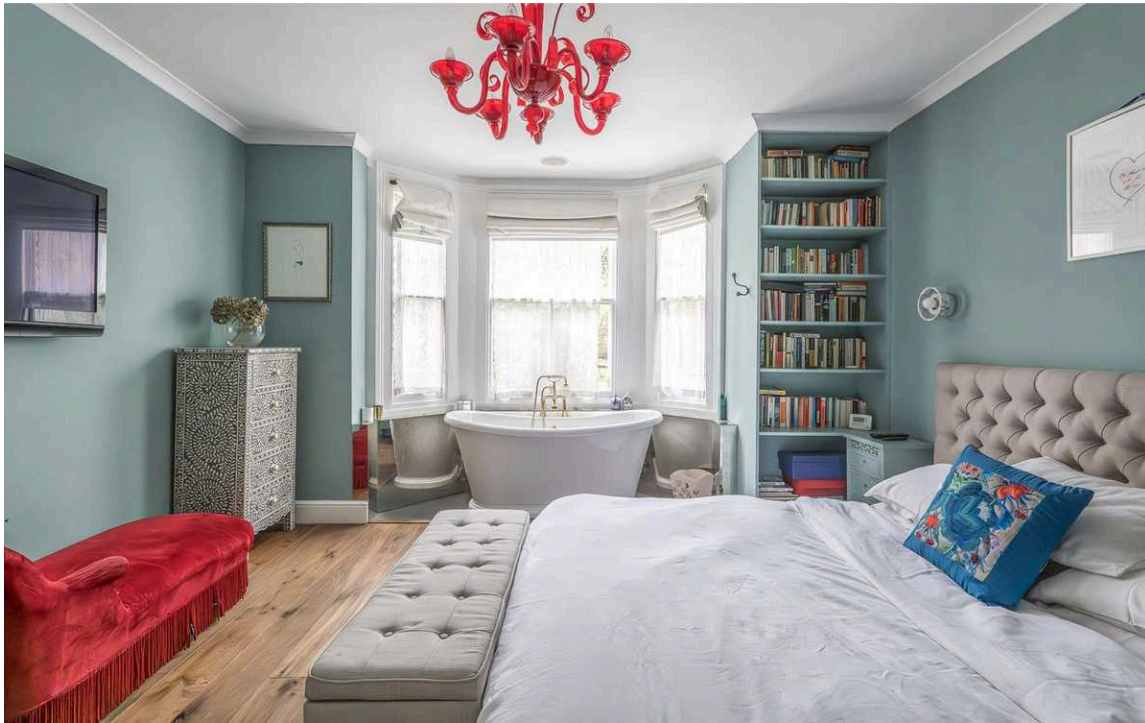


img 1

Gas Fireplace

img 2

Garden View



The Bedrooms

The lower ground floor offers a pair of bedrooms and a shared bathroom. The principal bedroom has a walk-in wardrobe and a bath positioned in the bay window. The rear bathroom has a pair of double French doors leading the garden.





The Design

The flat is decorated in a colourful fashion, with creative interiors offered in good condition.

Outdoor Spaces & The Neighbourhood



The property includes a paved rear garden with enough space for outdoor seating.

St Charles Square is a beautiful street lined in Victorian terrace houses, set back from the street and dressed in white stucco. The northern end of the Portobello Road is a short walk away, as well as the many shops and restaurants of Golborne Road. In addition, Ladbroke Grove underground station is close, and so too the picturesque towpath of the Grand Union canal.

St. Charles Square, W10

**RUSSELL
SIMPSON**

Approximate Internal Area

906 sq ft/ 84 sq m

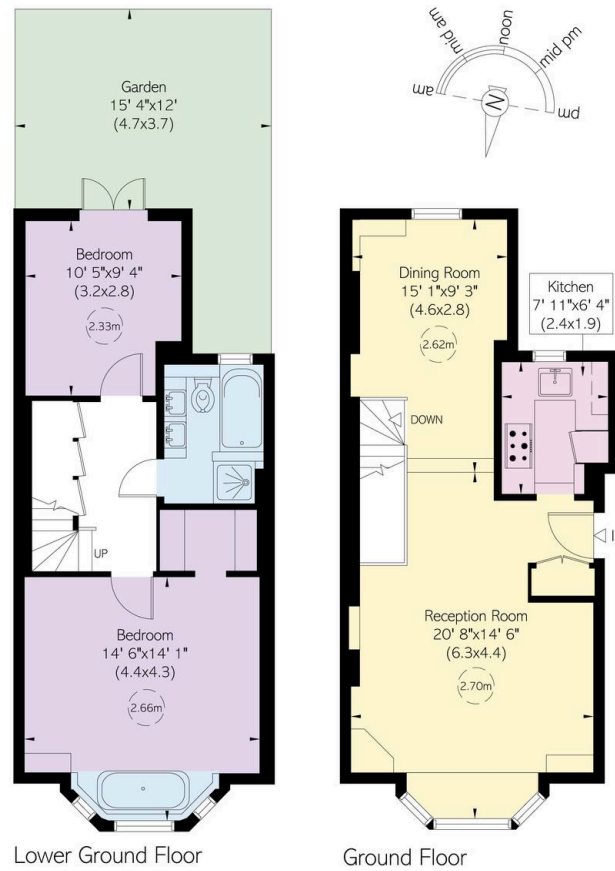
Including limited use area

3 sq ft/ 0.5 sq m

Outside Area

223 sq ft/ 21 sq m

This plan is for layout guidance only. Not drawn to scale unless stated. Windows and door openings are approximate. Whilst every care is taken in the preparation of this plan, please check all dimensions, shapes, and compass bearings before making any decisions reliant upon them.



**RUSSELL
SIMPSON**

Contact Us

+44 (0) 20 7225 0277

Contact us

info@russellsimpson.co.uk

Sydney Street

+44 (0) 20 7225 0277

151A Sydney Street

London

SW3 6NT

chelsea@russellsimpson.co.uk

Kensington Square

+44 (0) 20 3761 9691

13 Kensington Square

London

W8 5HD

kensington@russellsimpson.co.uk