

RUSSELL SIMPSON

Sublime and spacious four-bedroom
Arts & Crafts house with elegant
interiors to rent

SPRIMONT PLACE
CHELSEA SW3

Sprimont Place

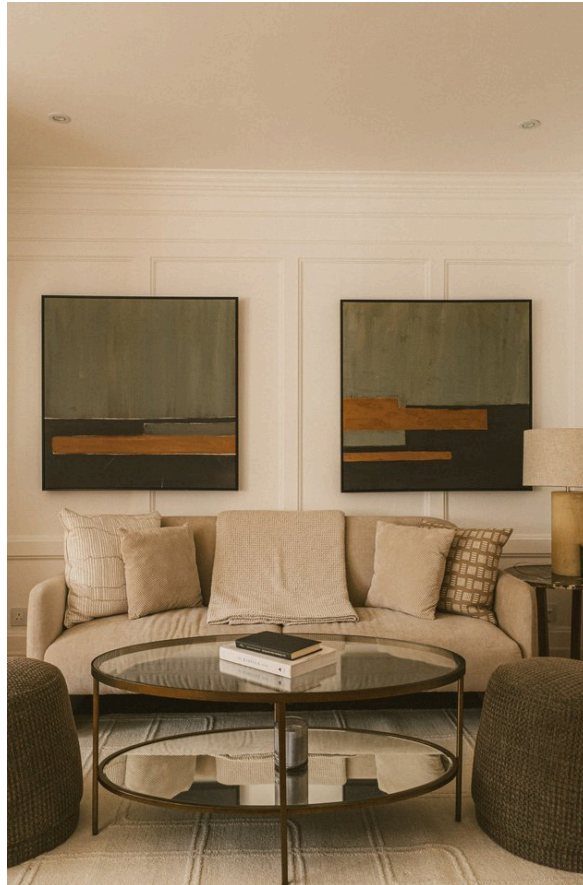
£3,115 P/W

BEDROOMS 4	INTERNAL 1,253 <small>SQ FT</small>	OUTDOOR 109 <small>SQ FT</small>	FURNISHED STATUS Furnished
BATHROOMS 2	116 <small>SQM</small>	EPC D	COUNCIL TAX RBKC, H

The Property

Delightful red-brick house in a historic setting close to the King's Road and Chelsea Green

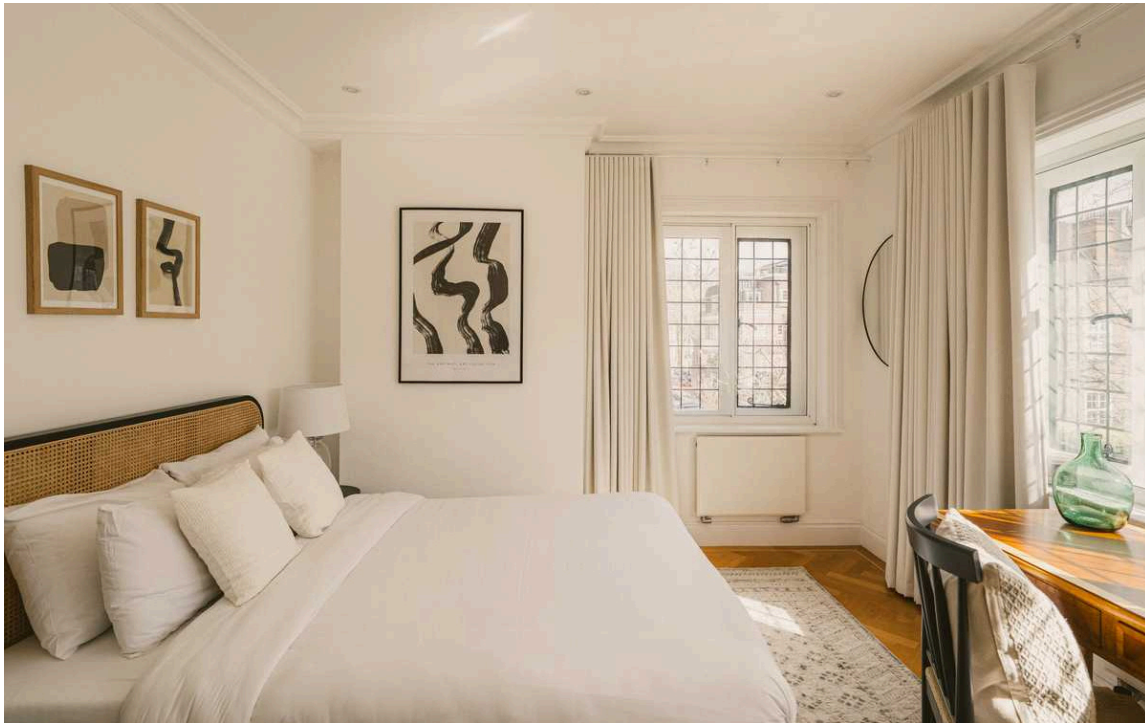
Stepping into the house on the ground floor, the front hall opens onto a generous reception room. As well as separate dining and seating areas, a wide south-east facing window fills this space with light. Furthermore, wooden floors, panelled walls and a stove fireplace add to the impression of historic charm.





The Kitchen

The reception room flows into a corridor kitchen with fitted units and a French door opening onto the rear patio. There is also a guest WC on the half-landing.



The Bedrooms

The first floor features two bedrooms, one with considerable wardrobe space, sharing a bathroom. The second floor contains two more bedrooms, also sharing a bathroom.

The Design

The interiors of the house have been decorated in an elegant fashion that combines traditional features with contemporary comfort. This results in a charming but stylish property, presented in very good condition.



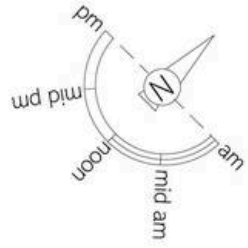
The Neighbourhood

The house includes a rear patio garden with enough space for outdoor seating.

The houses of Sprimont Place were built in the 1930s by the architectural firm of Wills & Kaula. Built from red brick in a simplified Tudor revival style, they recall the Arts & Crafts cottages and studios constructed around Chelsea towards the end of the nineteenth century.

The property is close to Chelsea Green, which is one of the neighbourhood's gastronomic centres, offering a range of delis, cafes and restaurants. The many shopping options of the King's Road are equally close, while Sloane Square station is also nearby.





Sprimont Place, SW₃

**RUSSELL
SIMPSON**

Approximate Internal Area

1,253 sq ft/ 116 sq m

Including limited use area

51 sq ft/ 5 sq m

Outside Area

110 sq ft/ 10 sq m

This plan is for layout guidance only. Not drawn to scale unless stated. Windows and door openings are approximate. Whilst every care is taken in the preparation of this plan, please check all dimensions, shapes, and compass bearings before making any decisions reliant upon them.



**RUSSELL
SIMPSON**

Contact Us

+44 (0) 20 7225 0277

151A Sydney Street
London
SW3 6NT

chelsea@russellsimpson.co.uk