



## **RUSSELL SIMPSON**

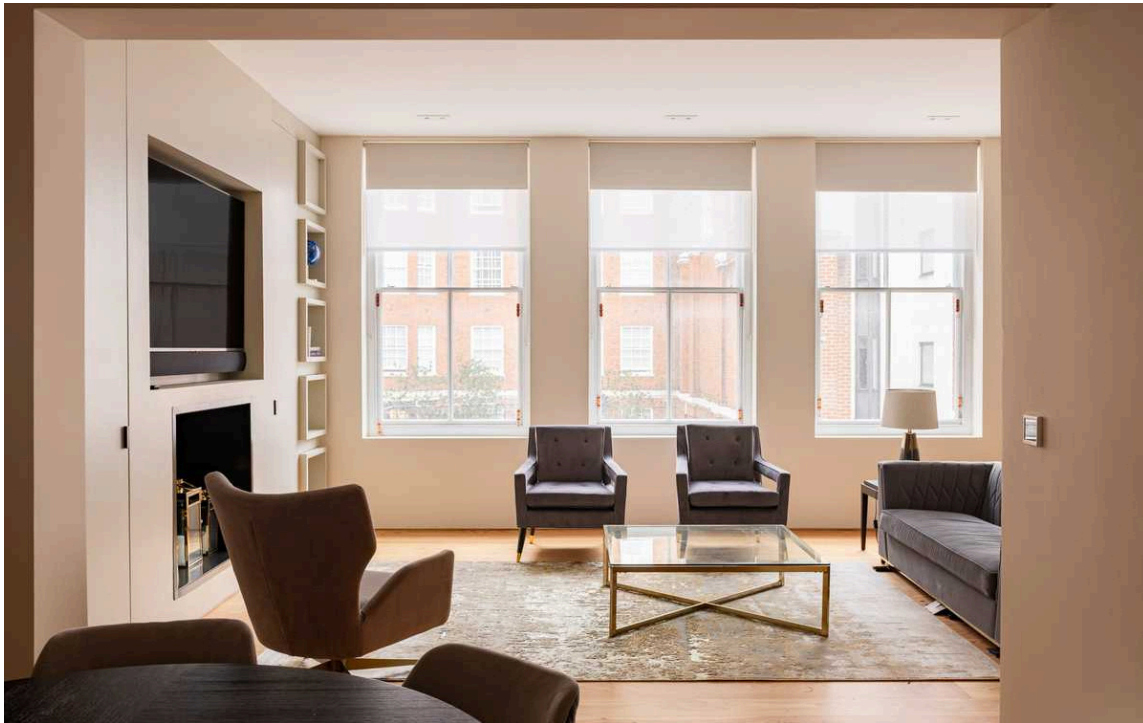
Elegant two-bedroom apartment in  
prestigious Mayfair location

SOUTH AUDLEY STREET  
MAYFAIR W1K

South Audley Street

£2,308 <sub>P/W</sub>

BEDROOMS 2	INTERNAL  1,372 <sub>SQ FT</sub>  127 <sub>SQM</sub>	OUTDOOR  —	FURNISHED STATUS  Furnished
BATHROOMS 2		EPC C	COUNCIL TAX Westminster City, H

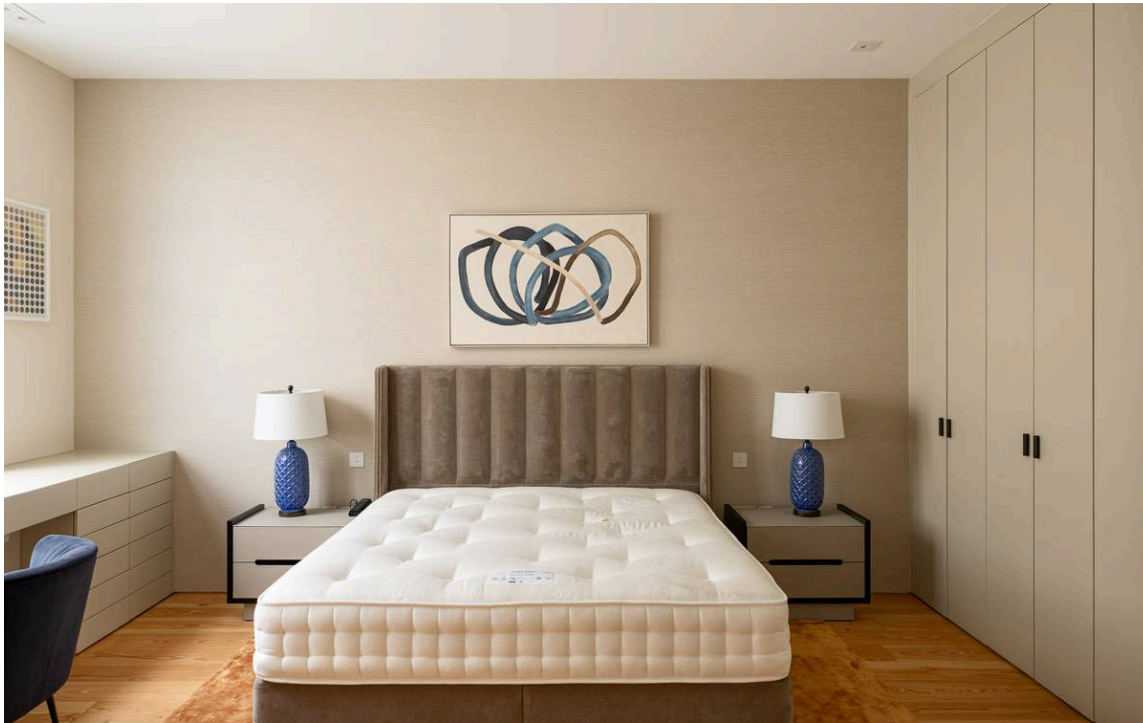


## The Property

A beautifully presented contemporary apartment with generous proportions.

Entering the flat, you are welcomed into a bright reception room with large windows overlooking the street. The space features built-in shelving and flows seamlessly into the dining area. The contemporary kitchen is fitted with sleek white units, dark countertops, and integrated appliances including an oven and induction hob.





## The Bedrooms

The bedroom offers a peaceful retreat with a substantial upholstered headboard, built-in wardrobes, and a desk area positioned beneath the window. The bathroom features a clean, minimalist design with a rectangular bathtub positioned beneath a frosted window, alongside a modern basin set into a dark countertop.

The second bedroom is also well-sized and enjoys the use of a separate shower room. Throughout, the apartment benefits from wooden floors and high ceilings that create a sense of scale, while the light-filled interiors are decorated in a restrained contemporary style.



# The Neighbourhood

South Audley Street is an attractive address in the heart of Mayfair, moments away from the open spaces of Hyde Park. The location offers easy access to the upmarket boutiques of Bond Street and the many restaurants and shops of this prestigious area, with Bond Street and Marble Arch stations within walking distance.

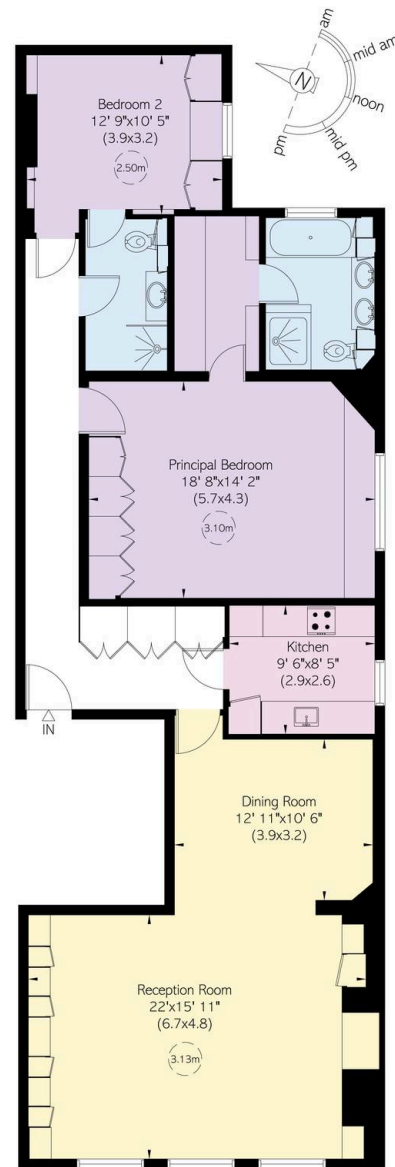


## South Audley Street, W1

**Approximate Internal Area**  
1,372 sq ft/ 127 sq m

**RUSSELL  
SIMPSON**

This plan is for layout guidance only.  
Not drawn to scale unless stated. Windows  
and door openings are approximate. Whilst  
every care is taken in the preparation of this  
plan, please check all dimensions, shapes,  
and compass bearings before making any  
decisions reliant upon them.



First Floor

**RUSSELL  
SIMPSON**

---

## Contact Us

+44 (0) 20 3761 9691

[mayfair@russellsimpson.co.uk](mailto:mayfair@russellsimpson.co.uk)

In accordance with the Property Mis-Description Act 1991, the following details have been prepared in good faith, and are not intended to constitute part of an offer or contract. Any information contained herein (whether in the text, plans or photographs) is given in good faith but should not be relied upon as being a statement of representation of fact. Nothing in these Particulars shall be deemed to be a statement that the property is in good condition or otherwise nor that any services or facilities are in good working order. Any measurements of distances referred to herein are approximate only. October 2021