



## **RUSSELL SIMPSON**

Perfectly positioned Chelsea flat  
with spectacular views to rent

SLOANE AVENUE MANSIONS  
CHELSEA SW3

# Sloane Avenue Mansions

# Let

BEDROOMS 1	INTERNAL 355 SQ FT	OUTDOOR —	FURNISHED STATUS Furnished
BATHROOMS 1	32 SQM	EPC C	COUNCIL TAX RBKC, D



## The Property

Studio flat in bright and beautiful Art Deco building with lift and porter close to the King's Road

Entering the flat on the seventh floor, the front hall leads into an open-plan kitchen. This room has enough space for combined seating and sleeping areas, while a breakfast bar takes advantage of the wide windows and beautiful views.

A sliding door leads through to a bathroom with a bath. In addition, the front hall has built-in storage and opens onto a dressing room.





## Indoor Spaces

The flat is designed in a minimal fashion to maximise the sense of space. Its corner position and double aspect adds to the brightness, while giving views over the rooftops of Knightsbridge.

Sloane Avenue Mansions is an Art Deco apartment building completed in 1933. It was designed by the architect G. Kay Green, who constructed several large blocks of flats during the interwar period. With its clean lines, curving corners and plain white exterior, it remains one of the best examples of the period's modern architecture. In addition, the building offers both lift and porter.





## The Neighbourhood

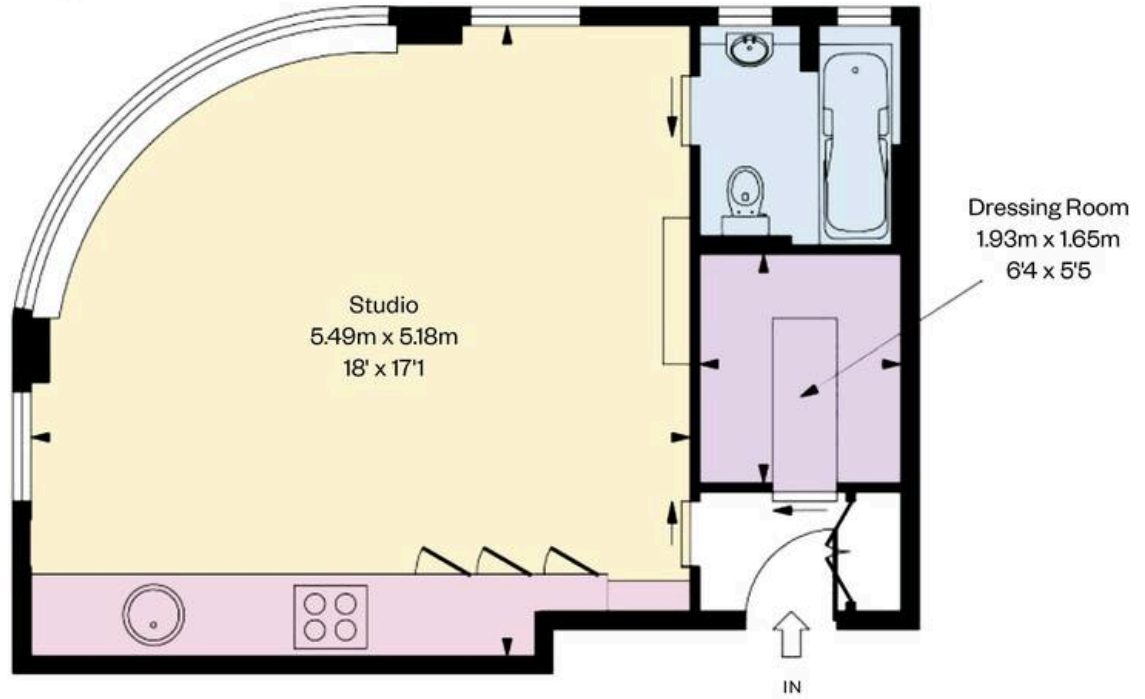
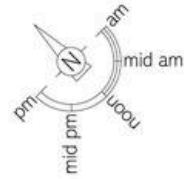
Sloane Avenue Mansions are positioned midway between Sloane Square and South Kensington underground stations. From here, the restaurants and shops of the King's Road are a short walk away. The world-class cultural institutions of South Kensington are also within easy reach.

Sloane Avenue Mansions,  
SW3

**Approx Gross Internal Area**  
371 sq ft / 34.46 sq m

**RUSSELL  
SIMPSON**

This plan is for layout guidance only. Not drawn to scale unless stated. Windows and door openings are approximate. Whilst every care is taken in the preparation of this plan. Please check all dimensions, shapes, and compass bearings before making any decisions reliant upon them.



SEVENTH FLOOR

**RUSSELL  
SIMPSON**

---

## Contact Us

+44 (0) 20 7225 0277

151A Sydney Street  
London  
SW3 6NT

[chelsea@russellsimpson.co.uk](mailto:chelsea@russellsimpson.co.uk)