



## **RUSSELL SIMPSON**

Chelsea flat to rent with spectacular  
views over Chelsea

SLOANE AVENUE MANSIONS  
CHELSEA SW3

# Sloane Avenue Mansions

# Let

BEDROOMS 0	INTERNAL 284 <sub>SQ FT</sub>	OUTDOOR —	FURNISHED STATUS Furnished
BATHROOMS 1	26 <sub>SQM</sub>	EPC C	COUNCIL TAX RBKC, C



## The Property

Studio flat in an historic Art Deco building with lift and porter close to the King's Road.

Entering the flat on the eighth floor, the front hall opens onto a curving reception room. This room has enough space for separate dining and seating areas, while a wide bank of windows offers uninterrupted views north over the rooftops of Knightsbridge.

## Indoor Spaces

The room communicates with a fitted kitchen. In addition, the front hall opens onto a bathroom with a shower. The flat is decorated in neutral colours to give a sense of calm.

Sloane Avenue Mansions is a beautiful Art Deco apartment building completed in 1933. It was designed by the architect G. Kay Green, who constructed several large blocks of flats during the interwar period, including the next-door Nell Gwynn House. With its clean lines, curving corners and plain white exterior, it remains one of the best examples of the period's modern architecture. In addition, the building benefits from both lift and porter.





## The Neighbourhood

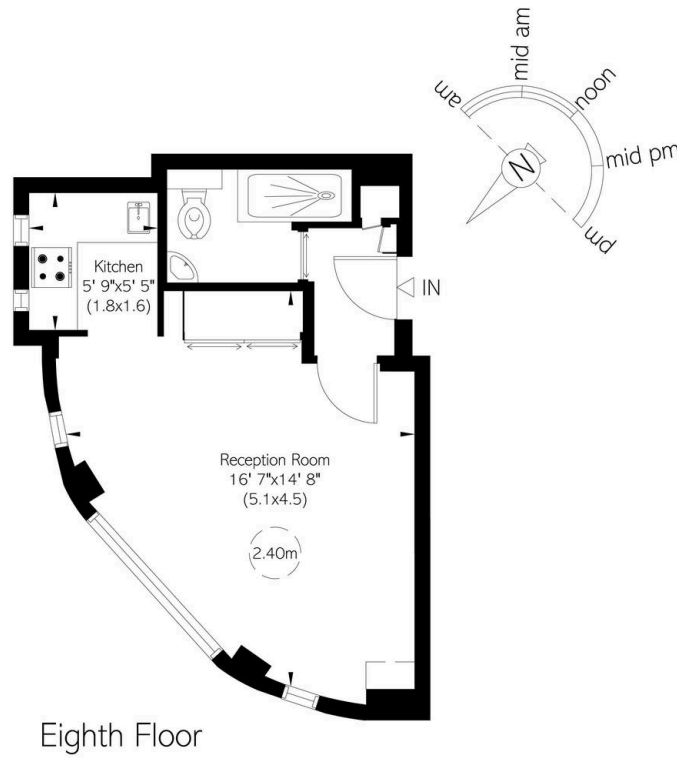
Sloane Avenue Mansions are positioned midway between Sloane Square and South Kensington underground stations. From here, the restaurants and shops of the King's Road are a short walk away. The world-class cultural institutions of South Kensington are also within easy reach.

# Sloane Avenue Mansions, SW<sub>3</sub> **RUSSELL SIMPSON**

**Approximate Internal Area**  
284 sq ft/ 26 sq m

**Including limited use area**  
2 sq ft/ 0 sq m

This plan is for layout guidance only. Not drawn to scale unless stated. Windows and door openings are approximate. Whilst every care is taken in the preparation of this plan, please check all dimensions, shapes, and compass bearings before making any decisions reliant upon them.



**RUSSELL  
SIMPSON**

---

## Contact Us

+44 (0) 20 7225 0277

Contact us

[info@russellsimpson.co.uk](mailto:info@russellsimpson.co.uk)

---

## Sydney Street

+44 (0) 20 7225 0277

151A Sydney Street

London

SW3 6NT

[chelsea@russellsimpson.co.uk](mailto:chelsea@russellsimpson.co.uk)

---

## Kensington Square

+44 (0) 20 3761 9691

13 Kensington Square

London

W8 5HD

[kensington@russellsimpson.co.uk](mailto:kensington@russellsimpson.co.uk)