



RUSSELL SIMPSON

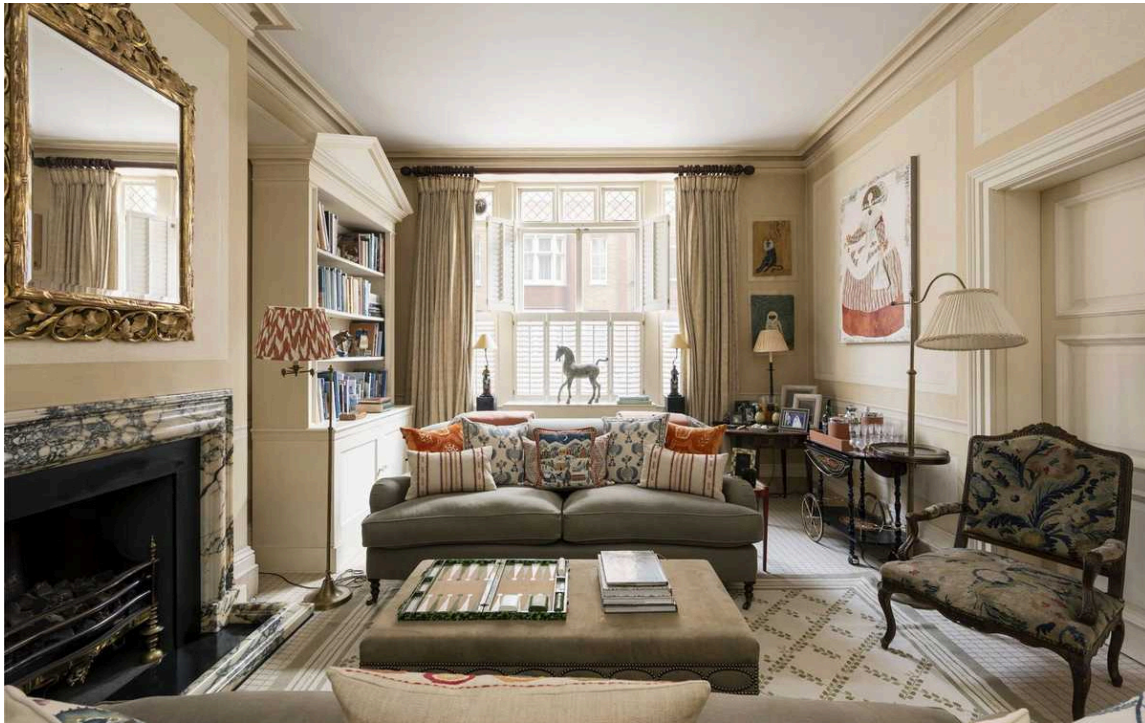
Beautifully decorated one-bedroom
flat to rent in a grand mansion block
near the River Thames

SHELLEY COURT
CHELSEA SW3

Shelley Court

£1,700 P/W

BEDROOMS 1	INTERNAL 1,087 <small>SQ FT</small>	OUTDOOR —	FURNISHED STATUS Furnished
BATHROOMS 1	100 <small>SQM</small>	EPC C	COUNCIL TAX RBKC, G



The Property

Spacious flat with elegant interiors on a historic street in the heart of Old Chelsea

Entering the flat on the ground floor, the front hall leads into a generous reception room. This is an elegant space with high ceilings, wide windows, elegant mouldings for the cornice and doorways, and a beautiful fireplace surround.

The property is presented in good condition and decorated in a tasteful classical style that suits the historic setting.

img 2

Reception Room





Indoor Spaces

Next door is a bedroom, also with high ceilings, as well as inbuilt wardrobe space. Furthermore, the flat contains a well-proportioned kitchen, with wooden floors and a dining area. A bathroom and a guest WC complete the layout.





The Neighbourhood

Shelley Court is a grand red brick mansion block with a porter on Tite Street. This is a picturesque address leading towards the River Thames, laid out in 1877. It soon became home to several celebrated Chelsea residents, including the writer Oscar Wilde and the painters Augustus John, James McNeill Whistler and John Singer Sargent.

From here, the restaurants and shops of the King's Road are close, while Sloane Square underground station is also nearby. In addition, the beautiful surroundings of the Chelsea Physic Garden are a short walk away.

Shelley Court, Tite Street

**RUSSELL
SIMPSON**

Approximate area
1087 sq ft / 101.0 sq m

Including limited use area
(7 sq ft / 0.7 sq m)

This plan is for layout guidance only. Not drawn to scale unless stated. Windows and door openings are approximate. Whilst every care is taken in the preparation of this plan, please check all dimensions, shapes, and compass bearings before making any decisions reliant upon them.



Ground Floor

**RUSSELL
SIMPSON**

Contact Us

+44 (0) 20 7225 0277

151A Sydney Street
London
SW3 6NT

chelsea@russellsimpson.co.uk