



RUSSELL SIMPSON

A one-of-a-kind five-bedroom
penthouse flat with spectacular roof
terrace in the heart of Kensington

CAMPDEN HOUSE
KENSINGTON W8

Campden House

£15,000 P/W

BEDROOMS 5	INTERNAL 5,055 <small>SQ FT</small>	OUTDOOR 1,419 <small>SQ FT</small>	FURNISHED STATUS Furnished
BATHROOMS 4	469 <small>SQM</small>	EPC D	COUNCIL TAX RBKC, H



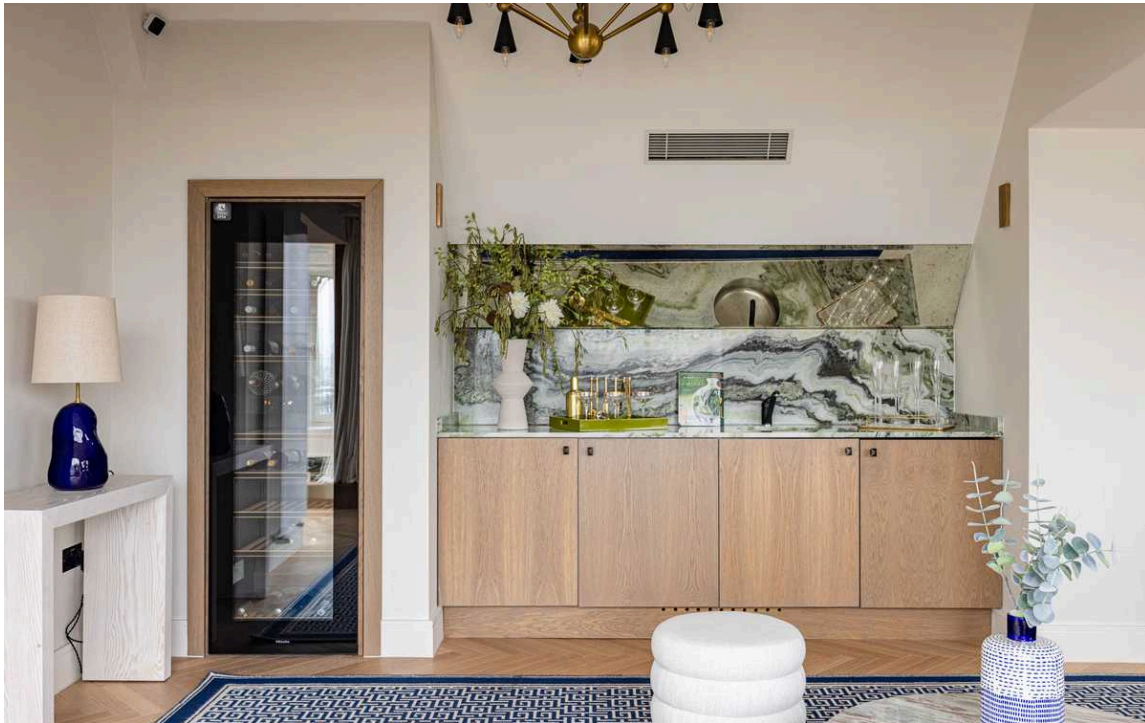
The Property

Large lateral duplex flat with bright interiors, air conditioning and access to a communal garden square



img 2

Top Floor Living



Indoor Spaces

The sixth floor features a generous open-plan kitchen with a central island breakfast bar. This room also offers a seating area and an informal dining area. Finally, this floor provides a reception room, an office and a utility room.

This floor centres on a spectacular penthouse reception room with sliding French doors leading out onto the terrace and beautiful rooftop views. There is also a central hall with an overhead skylight, a kitchen, a snug, a guest WC and considerable storage space.

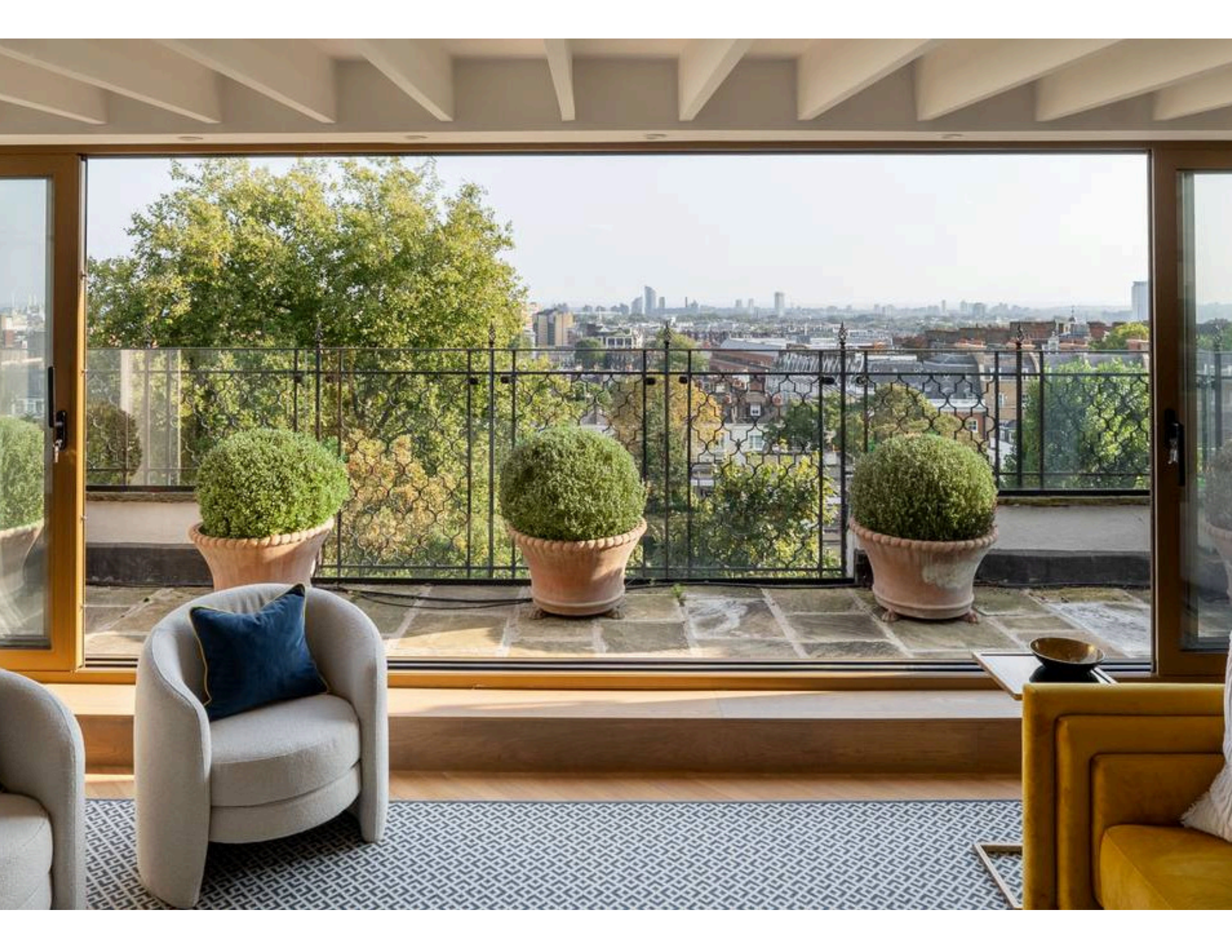
img 1

Upstairs Bar

img 2

Dining







The Bedrooms

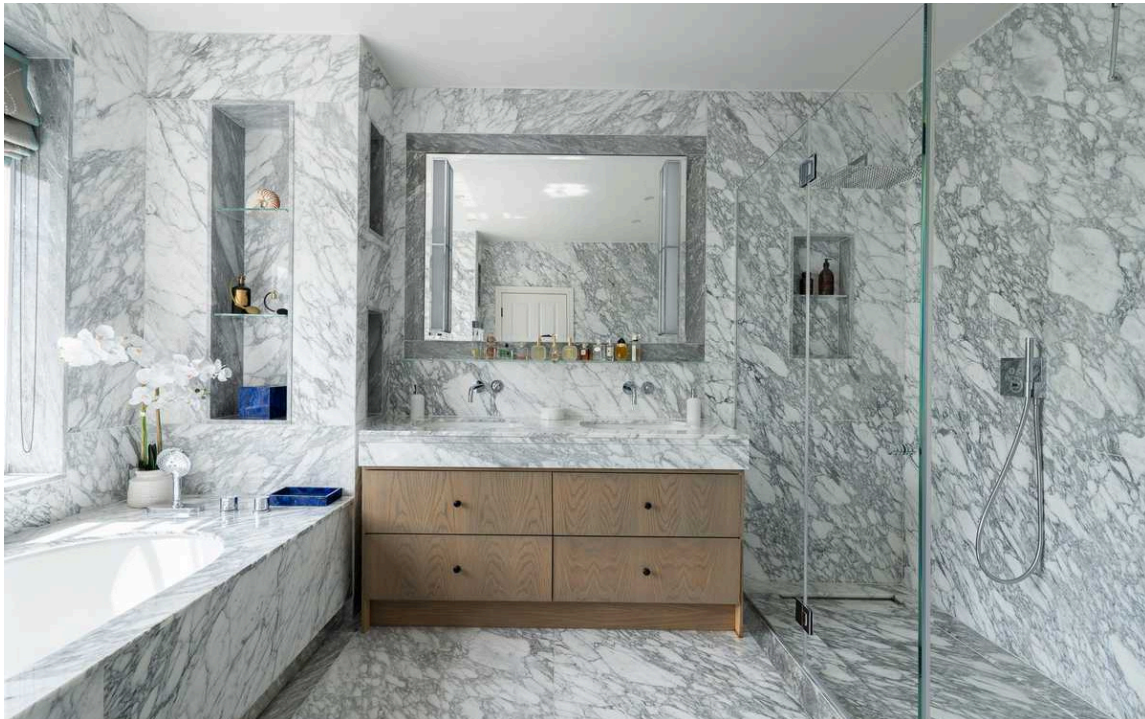
Entering the flat on the fifth floor, a central corridor connects the main rooms. This includes a generous principal bedroom with an ensuite bathroom, a pair of walk-in wardrobes and two south-facing balconies. This floor also contains four more bedrooms, two of them ensuite, the other two with a shared bathroom and inbuilt storage.

img 1

Principal Bedroom

img 2

Principal Bathroom



The Design

The property is presented in superb condition. The tasteful contemporary interiors include wooden floors, marble panelling for the bathrooms, and light-filled rooms.





Outdoor Spaces

The flat includes several south-facing balconies and a large paved roof terrace with enough space for outdoor entertaining.

The Neighbourhood

This beautiful building has a lift and a porter. In addition, residents have the right to access Sheffield Terrace garden square, a sought-after communal garden with three acres of grounds.

Sheffield Terrace is conveniently positioned midway between Holland Park and Kensington Gardens. From here, the many restaurants and shops of Kensington High Street are close, along with the underground station. Notting Hill Gate is also within walking distance.



Campden House, W8

RUSSELL SIMPSON

Approximate Internal Area
5,491 sq ft / 509 sq m

Including limited use area and outside storage
650 sq ft / 60 sq m

Outside Area
1,499 sq ft / 138 sq m

This plan is for layout guidance only. Not drawn to scale unless stated. Windows and door openings are approximate. Whilst every care is taken in the preparation of this plan, please check all dimensions, shapes, and compass bearings before making any decisions reliant upon them.



**RUSSELL
SIMPSON**

Contact Us

+44 (0) 20 7225 0277

Contact us

info@russellsimpson.co.uk

Sydney Street

+44 (0) 20 7225 0277

151A Sydney Street

London

SW3 6NT

chelsea@russellsimpson.co.uk

Kensington Square

+44 (0) 20 3761 9691

13 Kensington Square

London

W8 5HD

kensington@russellsimpson.co.uk