

**RUSSELL
SIMPSON**

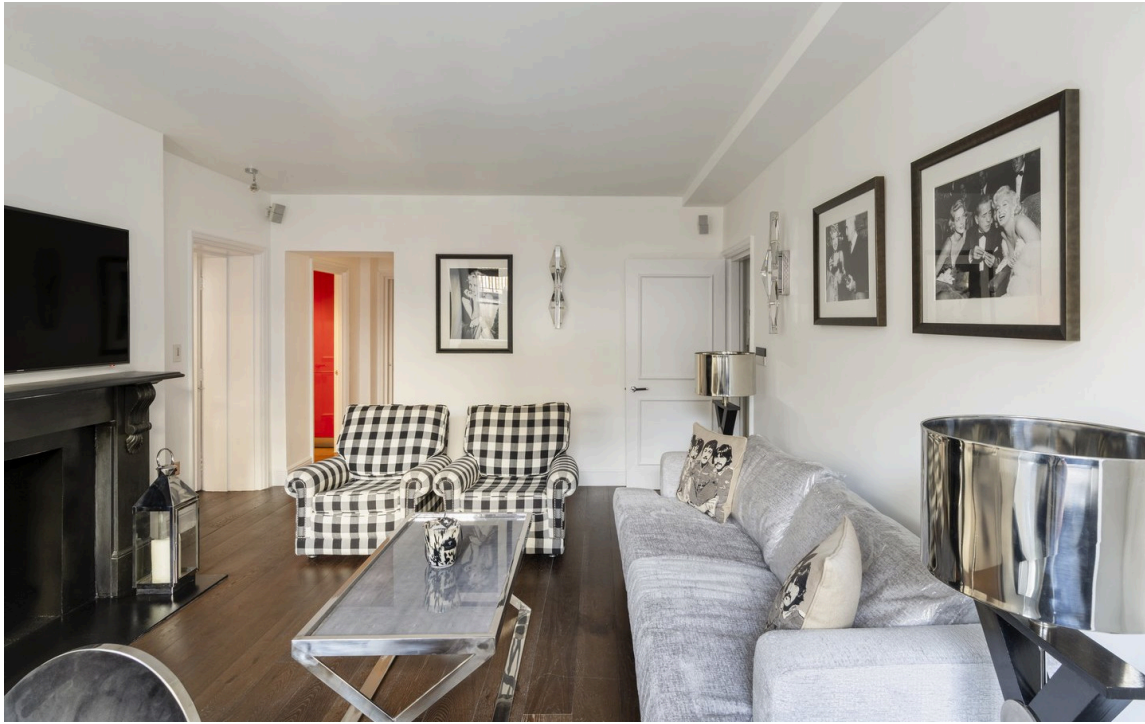
Sophisticated lateral flat in a
prestigious mansion block near
Knightsbridge

RUTLAND COURT
SOUTH KENSINGTON SW7

Rutland Court

£1,450 P/W

BEDROOMS 3	INTERNAL 1,233 <small>SQ FT</small>	OUTDOOR —	FURNISHED STATUS Furnished
BATHROOMS 3	114 <small>SQM</small>	EPC D	COUNCIL TAX Westminster City, H



The Property

Beautifully presented flat with bright rooms and contemporary design in the heart of South Kensington

Entering the flat, the entrance hall leads to a well-proportioned reception room. This inviting space features large windows that fill the room with natural light, complemented by tasteful décor and comfortable seating areas.

Indoor Spaces



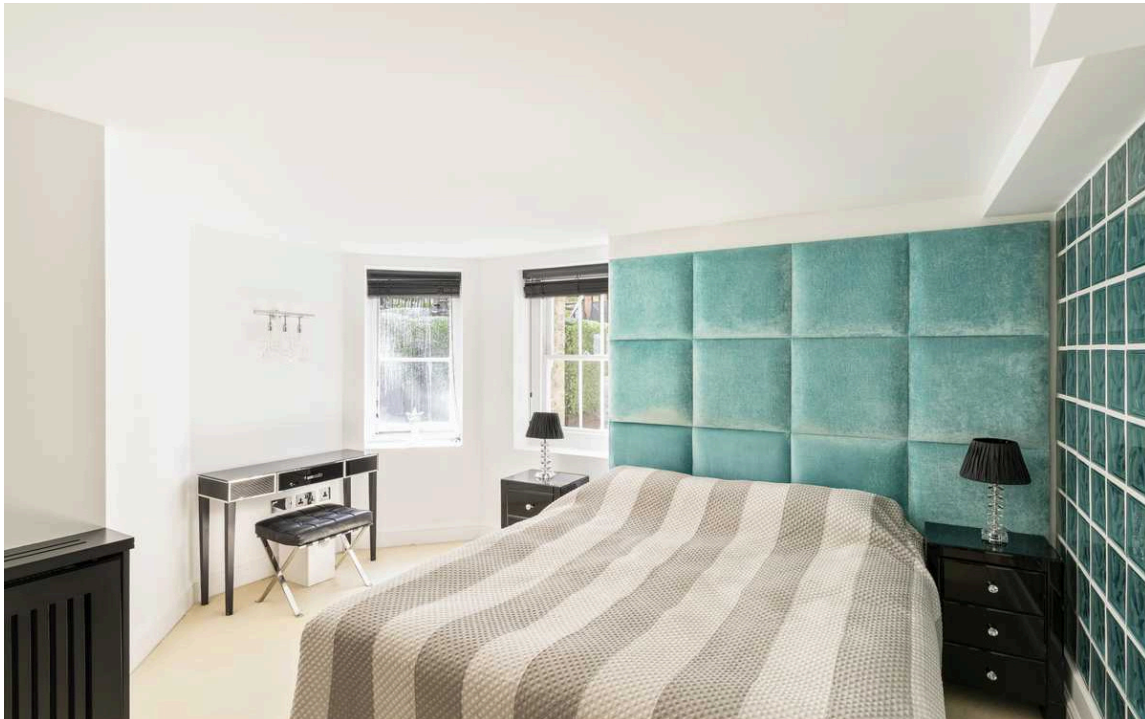
The property includes two kitchen areas - a main kitchen with contemporary fitted units and a smaller secondary kitchen. This versatile arrangement provides excellent flexibility for entertaining or family living.

Throughout the flat, the interiors have been thoughtfully designed with a modern aesthetic. The vibrant red cabinetry in the kitchen creates a striking contrast against black countertops, while the living spaces feature neutral tones accented with carefully selected artwork. Wooden floors create a sense of harmony and warmth throughout.



The Bedrooms

The flat contains three bedrooms. The principal bedroom offers generous proportions with ample space for storage. The second and third bedrooms are both well-sized, with the flat featuring three bathrooms finished to a high standard.





The Neighbourhood

Rutland Court is a prestigious red-brick mansion block situated in a prime South Kensington location. The building features attractive period architecture with a well-maintained façade and common areas. Residents benefit from the services of a porter, adding convenience and security to this desirable address.

From here, the museums of Exhibition Road are within easy walking distance, while the shops and restaurants of Knightsbridge are also nearby. Furthermore, Hyde Park and Kensington Gardens offer convenient access to green space. The property benefits from excellent transport links with South Kensington and Knightsbridge underground stations close by, providing swift connections across London.

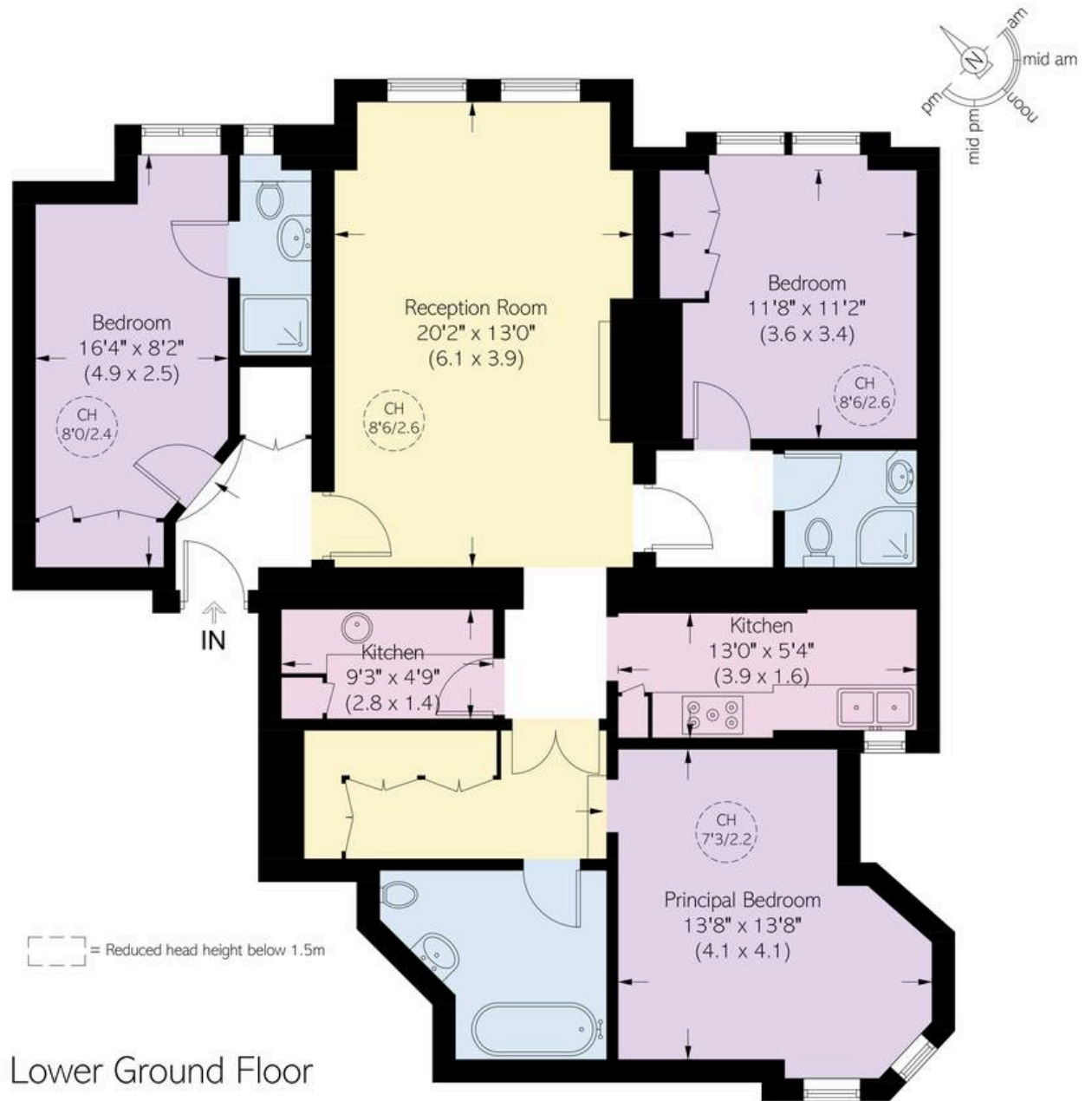
Rutland Court, SW7

Approximate area
1233 sq ft / 114.6 sq m

Including limited use area
(16 sq ft / 1.5 sq m)

RUSSELL SIMPSON

This plan is for layout guidance only.
Not drawn to scale unless stated. Windows
and door openings are approximate. Whilst
every care is taken in the preparation of this
plan, please check all dimensions, shapes,
and compass bearings before making any
decisions reliant upon them.



**RUSSELL
SIMPSON**

Contact Us

+44 (0) 20 7225 0277

151A Sydney Street
London
SW3 6NT

chelsea@russellsimpson.co.uk