

RUSSELL SIMPSON

Delightful mews house with modern
interiors close to Holland Park to
rent

ROYAL CRESCENT MEWS
HOLLAND PARK W11

Royal Crescent Mews

£750 P/W

BEDROOMS 1	INTERNAL 473 <small>SQ FT</small>	OUTDOOR —	FURNISHED STATUS Furnished
BATHROOMS 1	43 <small>SQM</small>	EPC C	COUNCIL TAX RBKC, E

The Property

Compact and convenient one-bedroom house on a quiet and attractive mews street

The mews is centred on a first-floor reception room. This includes an open-plan kitchen, as well as separate dining and seating areas. Wooden floors and tall windows bring added brightness into this space.

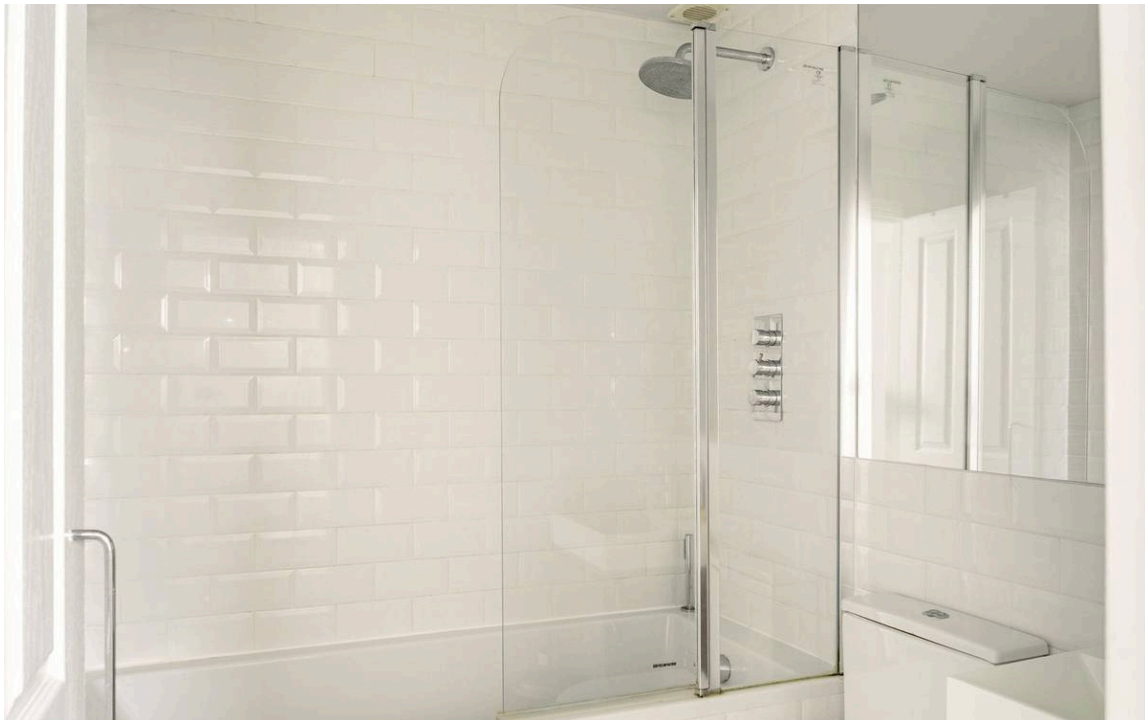




Indoor Spaces

Upstairs is a bedroom with inbuilt storage space, an overhead skylight and an internal balcony ensuring plenty of illumination. Downstairs is a bathroom and a front door.

The property has been carefully designed to maximise the sense of space. Its contemporary interiors are presented in very good condition, with underfloor heating throughout.





The Neighbourhood

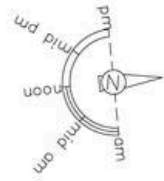
Royal Crescent Mews is a cobbled cul-de-sac lined with modern mews houses. The street was first constructed in the mid-Victorian era to provide stables for the grand townhouses of Royal Crescent. From here, Shepherd's Bush station is close, while the Westfield shopping centre is also nearby. In addition, the open spaces of Holland Park are within easy reach. Bills included

Royal Crescent Mews, W11

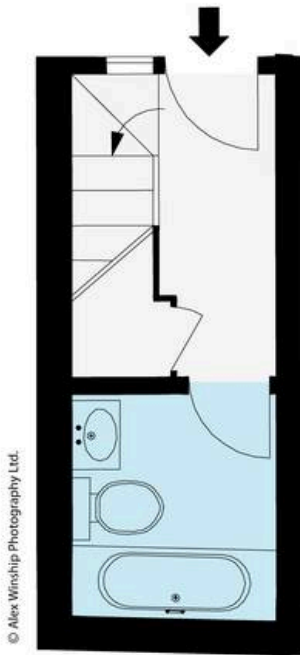
RUSSELL SIMPSON

approx. gross internal area
473 sq ft / 44.01 sq m
(Excluding Void)

This plan is for layout guidance only. Not drawn to scale unless stated. Windows and door openings are approximate. Whilst every care is taken in the preparation of this plan, please check all dimensions, shapes, and compass bearings before making any decisions reliant upon them.

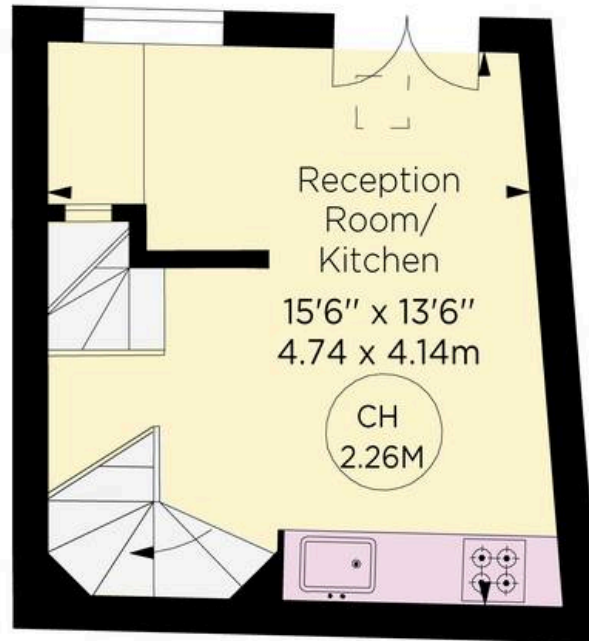


Key :
CH - Ceiling Height

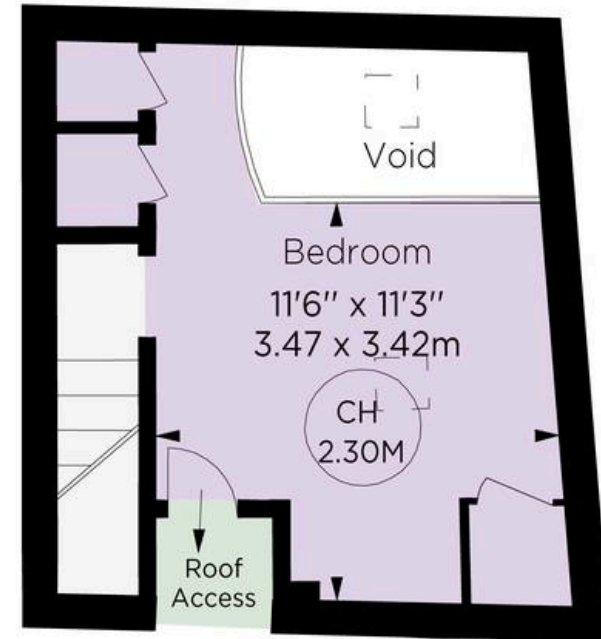


© Alex Winship Photography Ltd.

GROUND FLOOR



FIRST FLOOR



SECOND FLOOR

ALEX WINSHIP
Photography
© Alex Winship Photography Ltd.

*This plan is for guidance only, not to scale or valuation purposes. It must not be relied upon as a statement of fact. All measurements and areas are approximate and have been prepared in accordance with the current edition of the RICS Code of Measuring Practice.



**RUSSELL
SIMPSON**

Contact Us

+44 (0) 20 7225 0277

Contact us

info@russellsimpson.co.uk

Sydney Street

+44 (0) 20 7225 0277

151A Sydney Street

London

SW3 6NT

chelsea@russellsimpson.co.uk

Kensington Square

+44 (0) 20 3761 9691

13 Kensington Square

London

W8 5HD

kensington@russellsimpson.co.uk