



RUSSELL SIMPSON

Elegant two-bedroom flat to rent
close to Gloucester Road station

ROLAND GARDENS
SOUTH KENSINGTON SW7

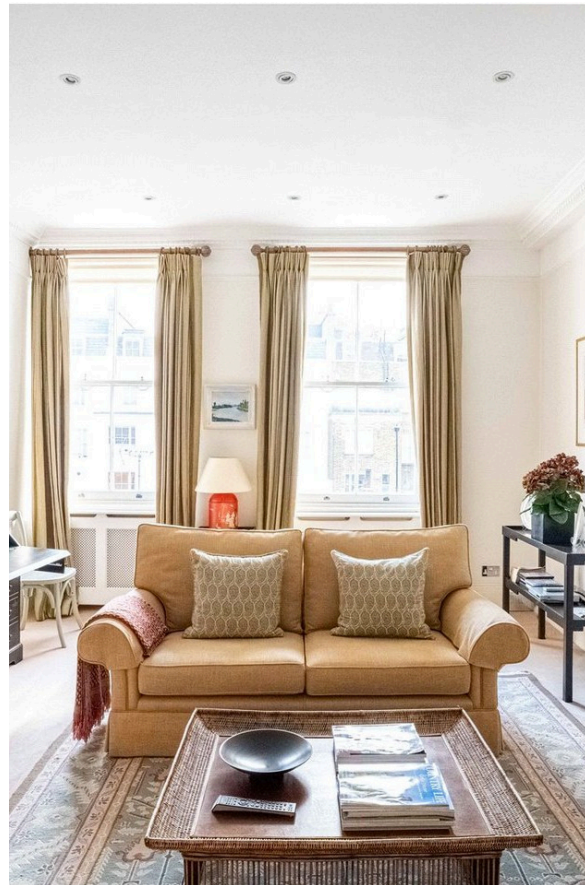
Roland Gardens

Let

BEDROOMS 2	INTERNAL 861 _{SQ FT}	OUTDOOR —	FURNISHED STATUS Furnished
BATHROOMS 1	79 _{SQM}	EPC D	COUNCIL TAX RBKC, G

The Property

Tasteful two-bedroom flat on a sought-after street in South Kensington



img 1

Details

img 2

Spacious Living Room



Indoor Spaces

Stepping into the flat on the second floor, the entrance leads through to a generous reception room. Full-length sash windows, a sculpted fireplace and ornate cornice all add to the sophistication of this space.





The Bedrooms

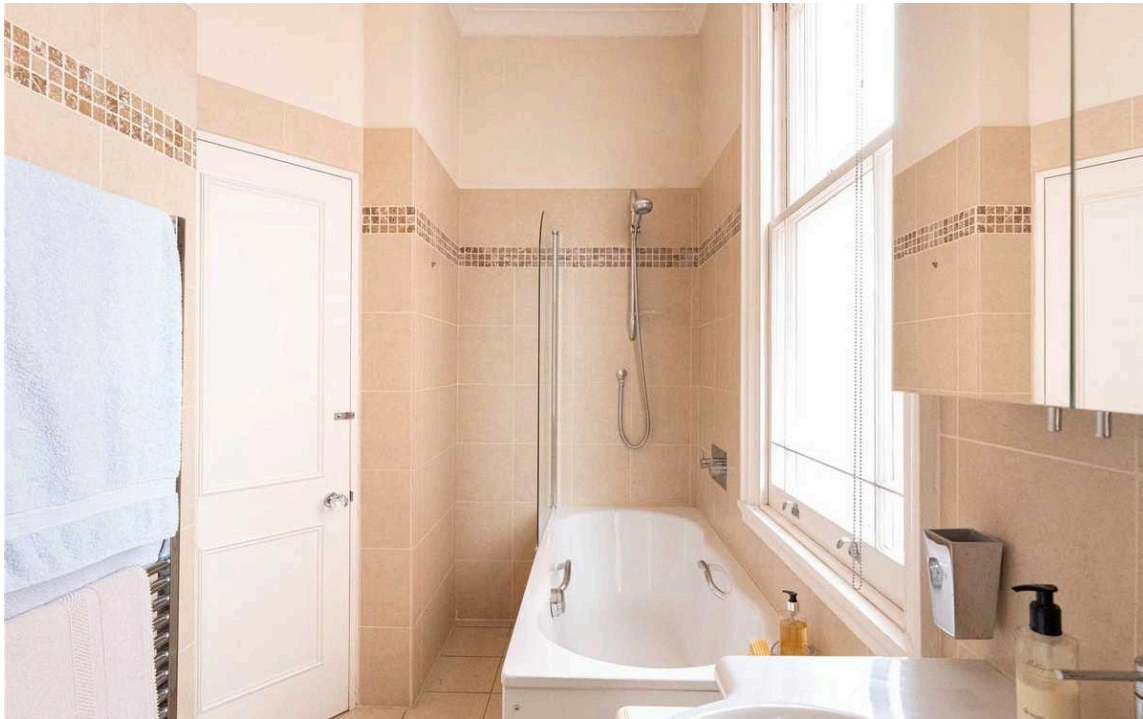
The flat also contains a fitted kitchen, a well-proportioned bathroom with a bath, and a pair of bedrooms with built-in storage. The decoration preserves the sense of elegance throughout.

img 1

Principal Bedroom

img 2

Bathroom





The Neighbourhood

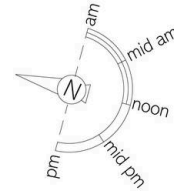
Roland Gardens is an attractive street in South Kensington, lined with late Victorian terrace houses. From here, the Fulham Road is close, with its celebrated range of restaurants and shops. In addition, Gloucester Road and South Kensington underground stations are both within walking distance.

Roland Gardens, SW7

**RUSSELL
SIMPSON**

Approximate Internal Area
861 sq ft/ 80 sq m

This plan is for layout guidance only. Not drawn to scale unless stated. Windows and door openings are approximate. Whilst every care is taken in the preparation of this plan, please check all dimensions, shapes, and compass bearings before making any decisions reliant upon them.



Second Floor

**RUSSELL
SIMPSON**

Contact Us

+44 (0) 20 7225 0277

Contact us

info@russellsimpson.co.uk

Sydney Street

+44 (0) 20 7225 0277

151A Sydney Street

London

SW3 6NT

chelsea@russellsimpson.co.uk

Kensington Square

+44 (0) 20 3761 9691

13 Kensington Square

London

W8 5HD

kensington@russellsimpson.co.uk