



## **RUSSELL SIMPSON**

Recently refurbished two-bedroom  
flat to rent on the edge of the  
prestigious Boltons Conservation  
Area

REDCLIFFE STREET  
CHELSEA SW10

Redcliffe Street

Let

BEDROOMS 2	INTERNAL 608 <sub>SQ FT</sub>	OUTDOOR —	FURNISHED STATUS —
BATHROOMS 1	56 <sub>SQM</sub>	EPC D	COUNCIL TAX RBKC, E



## The Property

Bright and beautiful flat with a spacious reception room on a quiet street in easy reach of Earl's Court.

Entering the flat on the first floor, the front hall leads through to a generous reception room. This room offers high ceilings and a broad bay window facing south-east, flooding it with natural light. It is decorated in a modest contemporary style, adding to the sense of space.





## Indoor Spaces

The property has been recently refurbished with new carpet laid throughout. Its bright and tranquil interiors are presented in excellent condition.

Next door is a bedroom with an inbuilt wardrobe, while the second bedroom can be found on the opposite side of the flat, also with storage space. In between is a well-proportioned bathroom with a bath and a fitted kitchen overlooking the rear gardens.





## The Neighbourhood

Redcliffe Street is a quiet and tree-lined residential road on the edge of the prestigious Boltons Conservation Area. Its terraced houses are set back from the street and decorated with white stucco dressings. From here, Earl's Court station is a short walk away, while West Brompton station is also nearby. Furthermore, the restaurants and shops of the Fulham Road and the Brompton Road are also within easy reach.

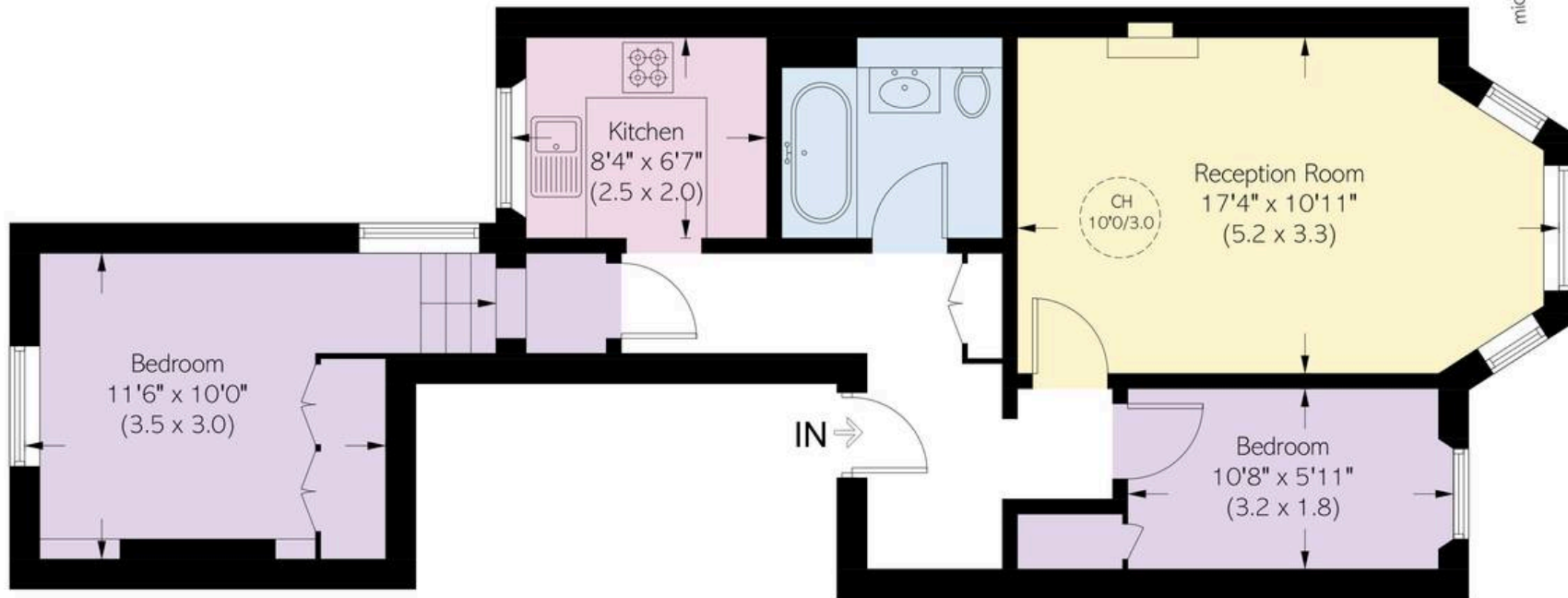
# Redcliffe Street, SW10

**RUSSELL  
SIMPSON**

**Approximate area**  
608 sq ft / 56.5 sq m

**Including limited use area**  
(11 sq ft / 1.0 sq m)

This plan is for layout guidance only. Not drawn to scale unless stated. Windows and door openings are approximate. Whilst every care is taken in the preparation of this plan, please check all dimensions, shapes, and compass bearings before making any decisions reliant upon them.



First Floor

**RUSSELL  
SIMPSON**

---

## Contact Us

+44 (0) 20 7225 0277

Contact us

[info@russellsimpson.co.uk](mailto:info@russellsimpson.co.uk)

---

## Sydney Street

+44 (0) 20 7225 0277

151A Sydney Street

London

SW3 6NT

[chelsea@russellsimpson.co.uk](mailto:chelsea@russellsimpson.co.uk)

---

## Kensington Square

+44 (0) 20 3761 9691

13 Kensington Square

London

W8 5HD

[kensington@russellsimpson.co.uk](mailto:kensington@russellsimpson.co.uk)