

RUSSELL SIMPSON

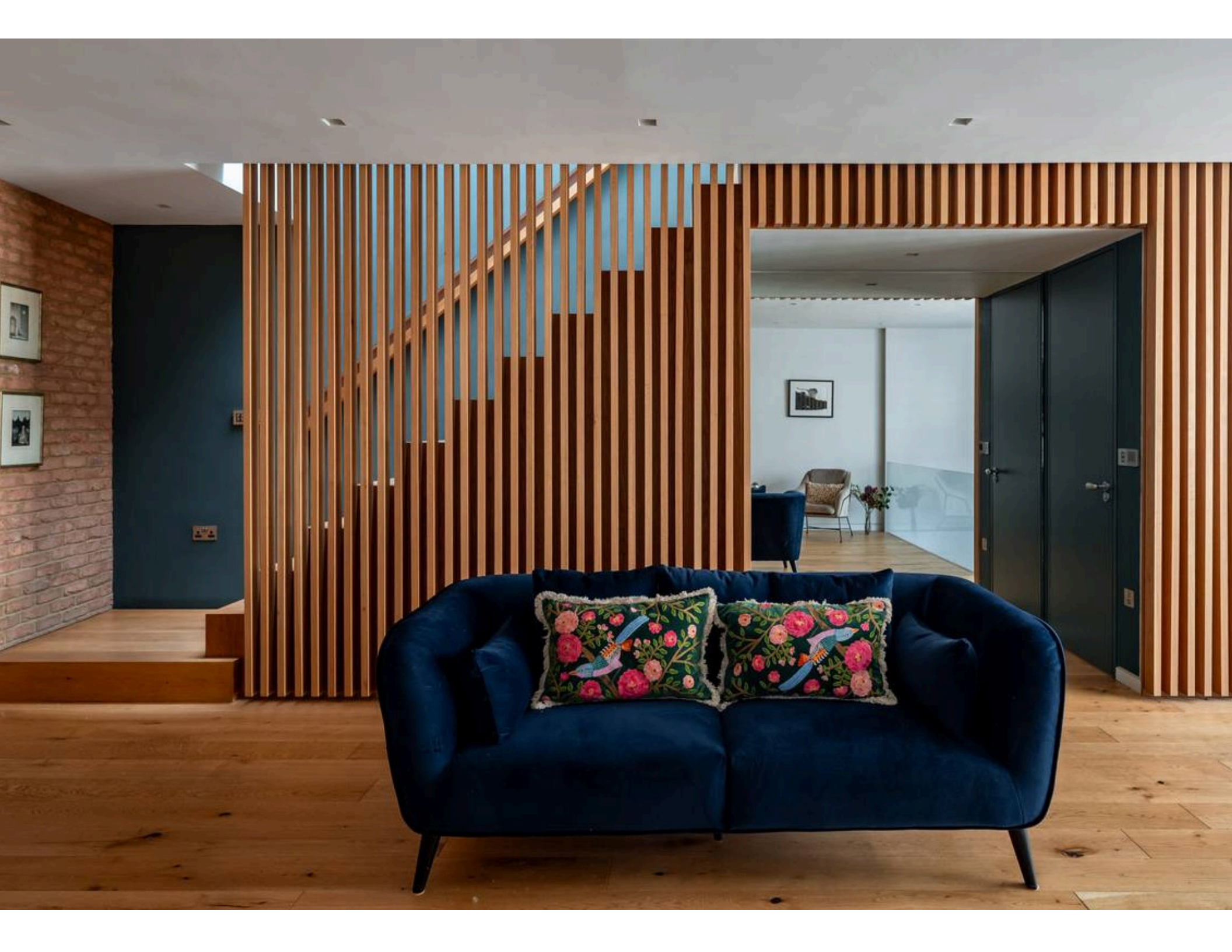
An immaculately designed and
exceptionally well-appointed mews
house moments from Kensington
Palace Gardens

PRINCES MEWS
BAYSWATER W2

Princes Mews

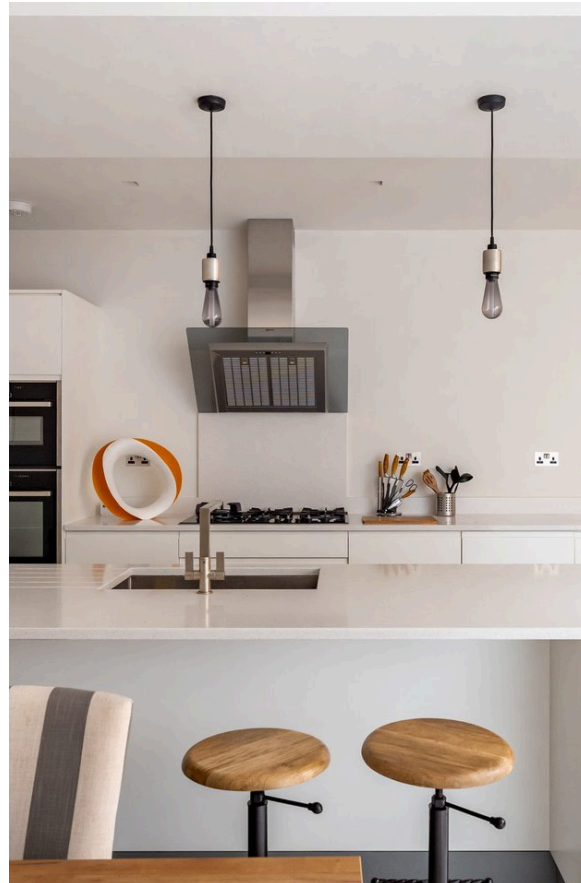
£2,250 _{P/W}

BEDROOMS 3—3	INTERNAL 1,520 _{SQ FT} 141 _{SQM}	OUTDOOR —	FURNISHED STATUS Furnished
BATHROOMS 3—3		EPC C	COUNCIL TAX Westminster City, G



The Property

Designed by the acclaimed architect Neil Tomlinson, this Freehold property has been comprehensively rebuilt, offering outstanding proportions and versatile living space linked with a staircase which maximises natural light.





Indoor Spaces

Situated on the first floor is the master suite, with two further bedrooms and a family bathroom with wonderful natural light, aided by the skylights.





The Design

The property's width and use of materials lends itself well to creating an atmosphere and feeling of lateral space and enjoys a pretty outlook onto the quiet cobbled mews.



The Neighbourhood

Located within a quiet mews the property is moments from the shops, restaurants and cultural landmarks of Notting Hill as well as the open spaces of Kensington Park Gardens and Hyde Park, and for a small fee, owners are also eligible for entry to the beautiful, private Princes Square. Bayswater, Queensway and Notting Hill Gate underground stations are a few minutes' walk away.

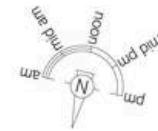
Princes Mews, W2

Approx Gross Internal Area

1,520 sq ft / 141.21 sq m
(Excluding Void)

**RUSSELL
SIMPSON**

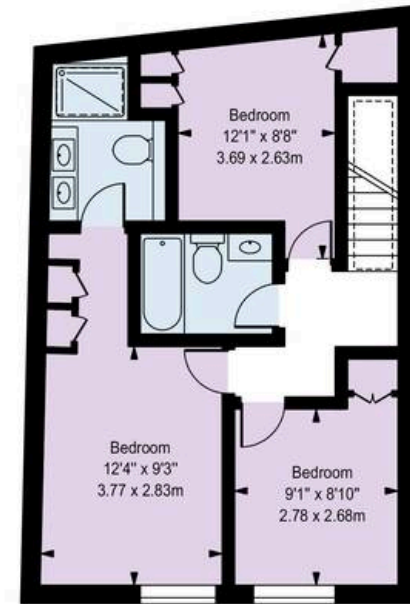
This plan is for layout guidance only. Not drawn to scale unless stated. Windows and door openings are approximate. Whilst every care is taken in the preparation of this plan. Please check all dimensions, shapes, and compass bearings before making any decisions reliant upon them.



BASEMENT



GROUND FLOOR



FIRST FLOOR

**RUSSELL
SIMPSON**

Contact Us

+44 (0) 20 3761 9691

13 Kensington Square
London
W8 5HD

kensington@russellsimpson.co.uk