



RUSSELL SIMPSON

Beautiful Battersea flat to rent with
two terraces and parkland views

PRINCE OF WALES DRIVE
BATTERSEA SW11

Prince Of Wales Drive

Let

BEDROOMS 3	INTERNAL 1,245 SQ FT 115 SQM	OUTDOOR —	FURNISHED STATUS Unfurnished
BATHROOMS 2		EPC C	COUNCIL TAX Wandsworth Council, F



The Property

Three-bedroom flat which has just been redecorated throughout, in an impressive Victorian mansion block with views over Battersea Park

Indoor Spaces



Russell Simpson



Prince Of Wales Drive

Entering the flat on the first floor, the front hall leads through to a double reception room. This is a generous room, with enough space for separate dining and seating areas, as well as a pair of double French doors leading out onto two terraces.

On the other side of the flat is a principal bedroom with a dressing room and an ensuite bathroom. In addition, the flat contains two more bedrooms, sharing a second bathroom. Finally, the flat includes a fitted kitchen and considerable inbuilt storage.



Outdoor Spaces

The property offers a pair of terraces with enough space for outdoor seating and views over the south-west corner of Battersea Park.



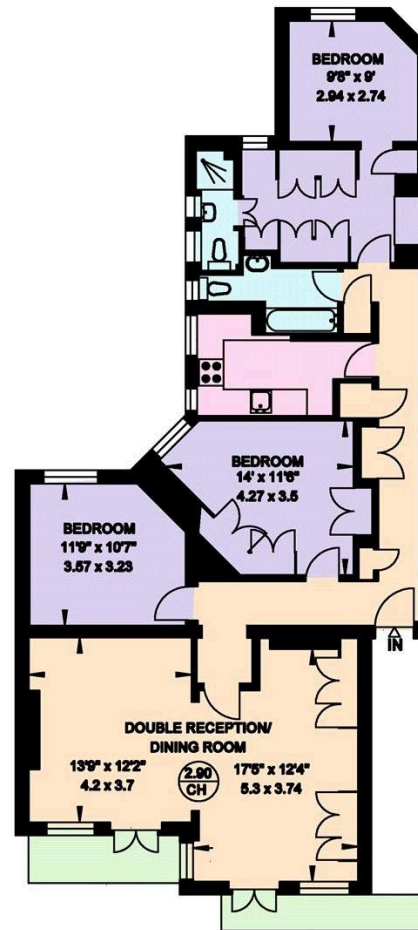
The Neighbourhood

Park Mansions is positioned near the Sun Gate entrance of Battersea Park, a short walk to Albert Bridge as well as the bus routes on Battersea Park Road and Battersea Bridge Road.



PARK MANSIONS
LONDON SW11

Gross Internal Area = 115 sq. metres
1245 sq. feet



FIRST FLOOR

**RUSSELL
SIMPSON**

Contact Us

+44 (0) 20 7225 0277

151A Sydney Street
London
SW3 6NT

chelsea@russellsimpson.co.uk

In accordance with the Property Mis-Description Act 1991, the following details have been prepared in good faith, and are not intended to constitute part of an offer or contract. Any information contained herein (whether in the text, plans or photographs) is given in good faith but should not be relied upon as being a statement of representation of fact. Nothing in these Particulars shall be deemed to be a statement that the property is in good condition or otherwise nor that any services or facilities are in good working order. Any measurements of distances referred to herein are approximate only. October 2021