

RUSSELL SIMPSON

Unique duplex apartment on the
world famous Portobello Road

PORTOBELLO ROAD
NORTH KENSINGTON W10

Portobello Road

Let

BEDROOMS 3	INTERNAL 1,395 SQ FT	OUTDOOR —	FURNISHED STATUS Unfurnished
BATHROOMS 2	129 SQM	EPC E	COUNCIL TAX RBKC, E



The Property

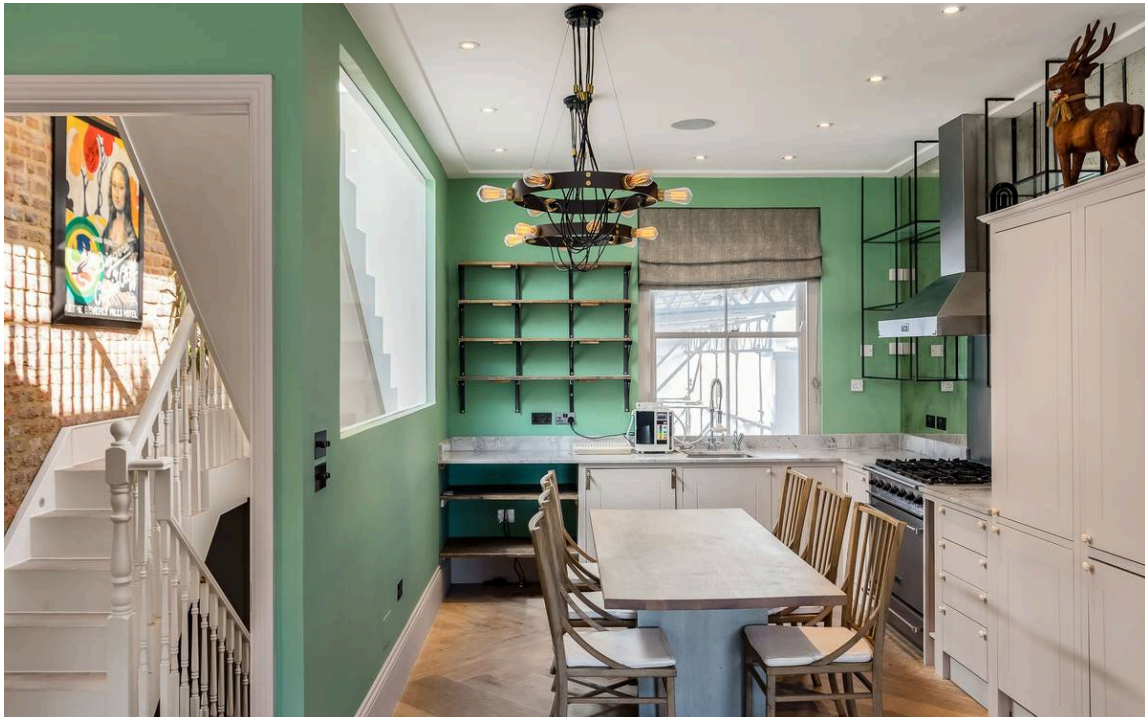
Entering the property through it's own private front door, there is a staircase up to a family bathroom with free standing bath, and a clever utility cupboard tucked away in the corridor.

img 1

Roof Terrace

img 2

Eat In Kitchen





Indoor Spaces

The top floor includes the large open plan kitchen and living area, along with the third bedroom and study. There is also a convenient cloakroom on this floor.

The first floor comprises the principle bedroom with generous storage and an en suite shower room. There is also a second double bedroom with its own private terrace.





Outdoor Spaces

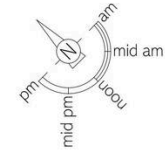
The property boasts a wonderful roof terrace which attracts sunshine all day.

The Neighbourhood

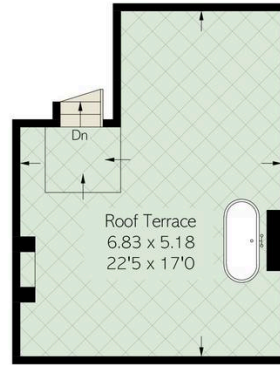
Portobello Road is one of the most popular street in Notting Hill, due to it's array of restaurants, bar, cafes, independent shops and its world famous market.

PORTOBELLO ROAD, W10

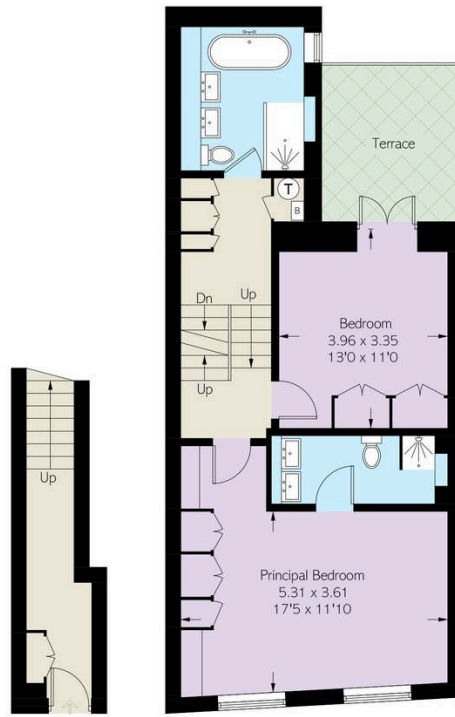
Approximate Area = 1395 sq ft / 129.6 sq m
 Including Limited Use Area (17 sq ft / 1.6 sq m)
 (Excluding Void)



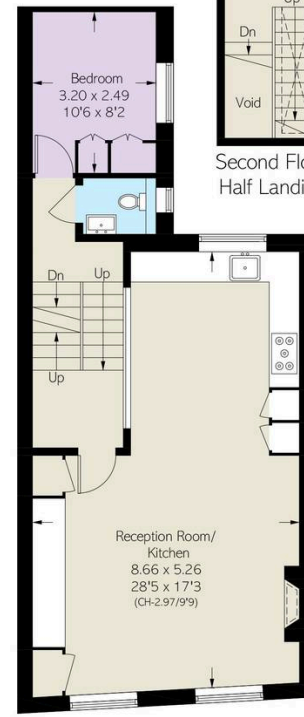
☐ = Reduced head height below 1.5m



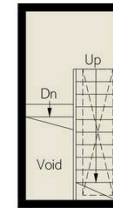
Third Floor



First Floor



Second Floor



Second Floor
Half Landing

Ground Floor

**RUSSELL
SIMPSON**

Contact Us

+44 (0) 20 7225 0277

Contact us

info@russellsimpson.co.uk

Sydney Street

+44 (0) 20 7225 0277

151A Sydney Street

London

SW3 6NT

chelsea@russellsimpson.co.uk

Kensington Square

+44 (0) 20 3761 9691

13 Kensington Square

London

W8 5HD

kensington@russellsimpson.co.uk