



RUSSELL SIMPSON

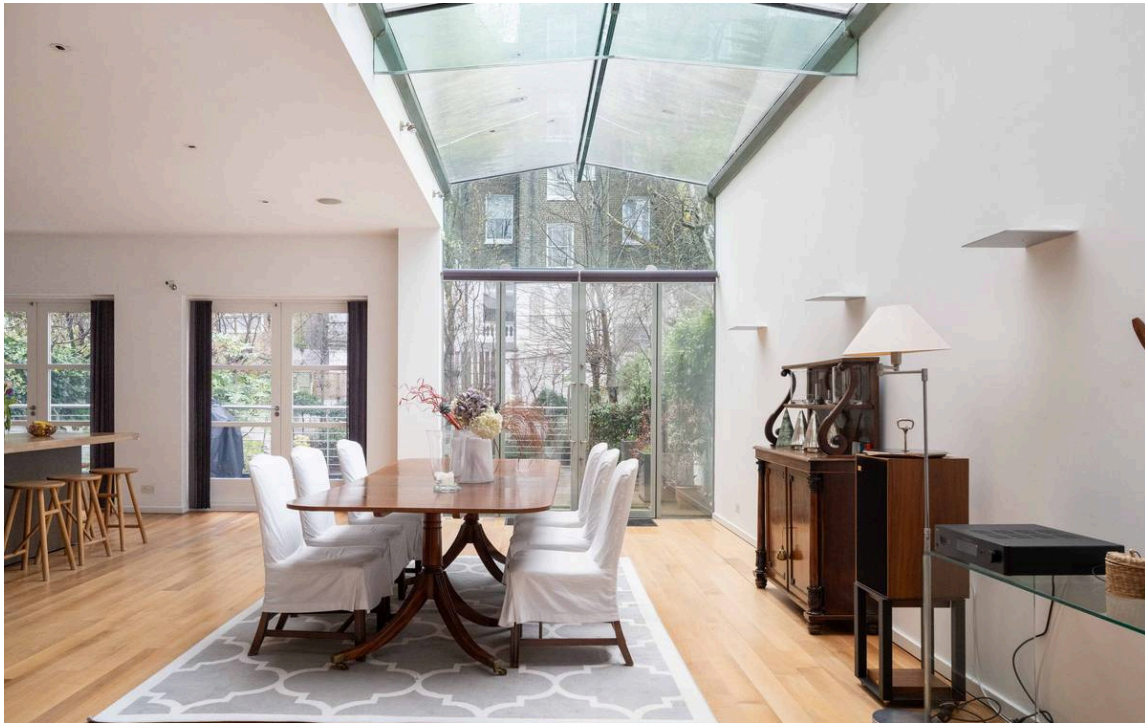
Exceptional seven bedroom house to
rent with pool and feature staircase
near Hyde Park

PORCHESTER TERRACE
BAYSWATER W2

Porchester Terrace

£12,000 P/W

BEDROOMS 7	INTERNAL 6,681 <small>SQ FT</small>	OUTDOOR 3,546 <small>SQ FT</small>	FURNISHED STATUS Unfurnished
BATHROOMS 5	620 <small>SQM</small>	EPC E	COUNCIL TAX Westminster City, H



The Property

Unique semi-detached house with modern and spacious interiors on a historic street in Bayswater

The house is decorated in a clean, contemporary style, maximising the sense of light and space throughout. It offers both air conditioning and underfloor heating.





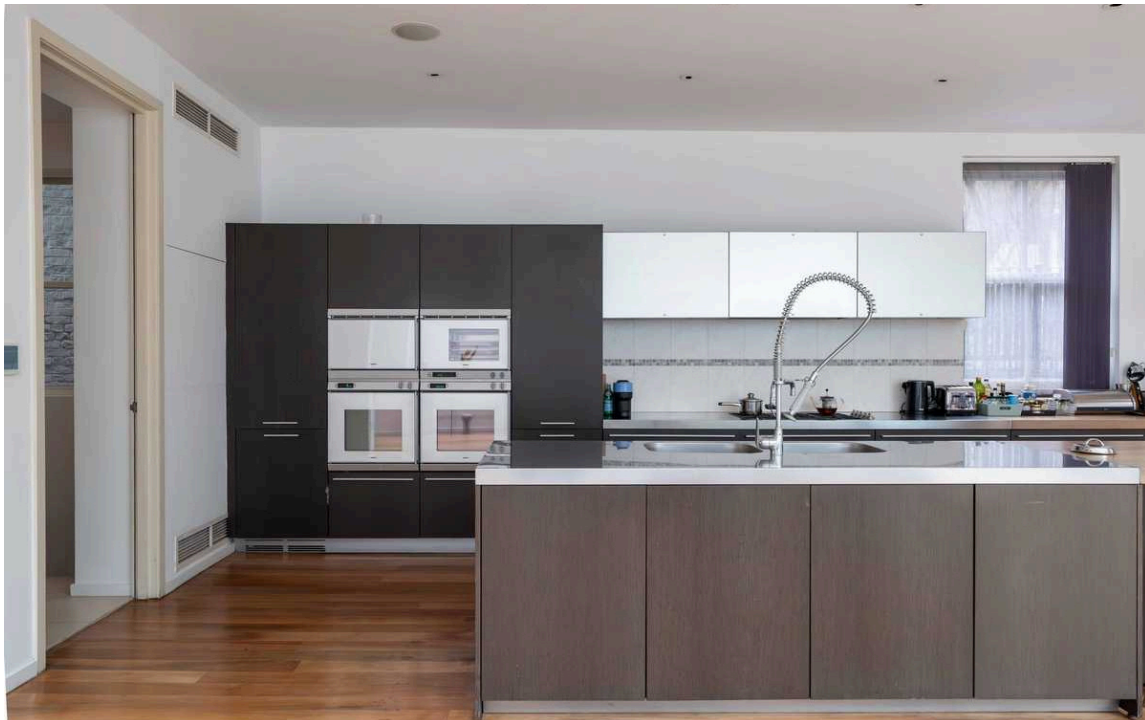
Indoor Spaces

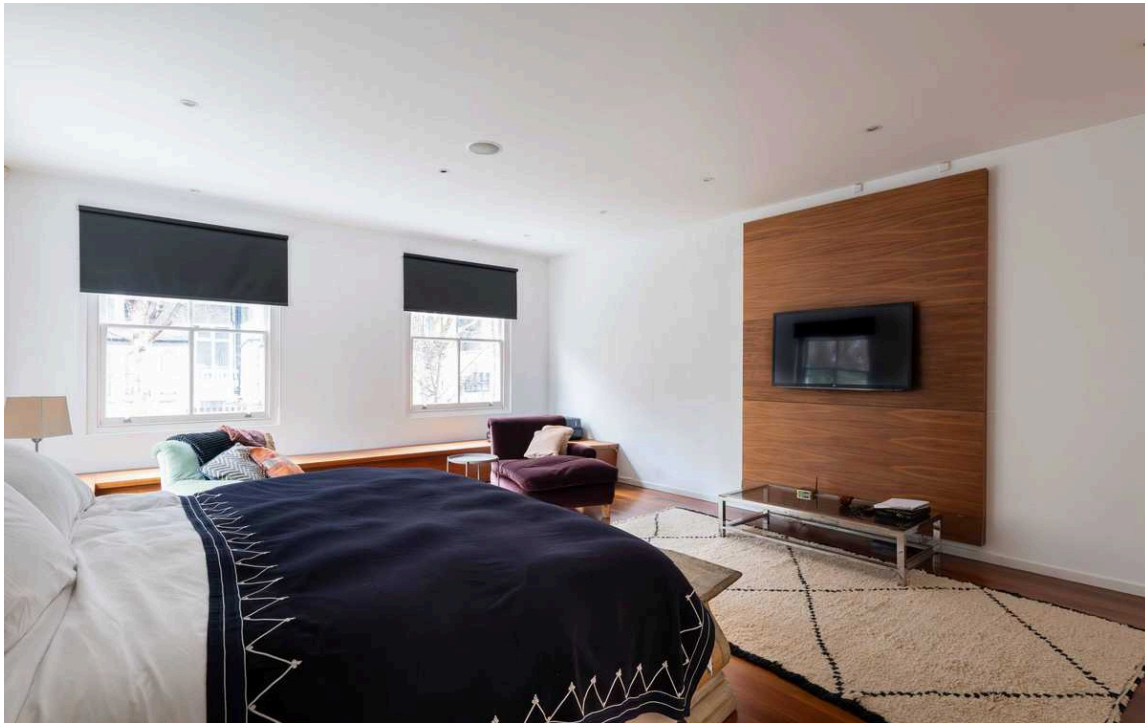
Entering the house on the ground floor, the front hall leads through to a front reception room. This room includes a bay windows with three double French doors leading out onto Juliet balconies. It communicates with the generous open-plan kitchen, offering a central island and breakfast bar, as well as access to the garden terrace. The dining area is filled with brightness, thanks to the floor-to-ceiling windows and overhead skylights.



Entertaining Spaces

The lower ground floor features a swimming pool with hot tub and steam room. In addition, it offers a well-proportioned reception room with access into the garden. This floor also contains an ensuite bedroom, a utility room, a kitchenette and separate street access.

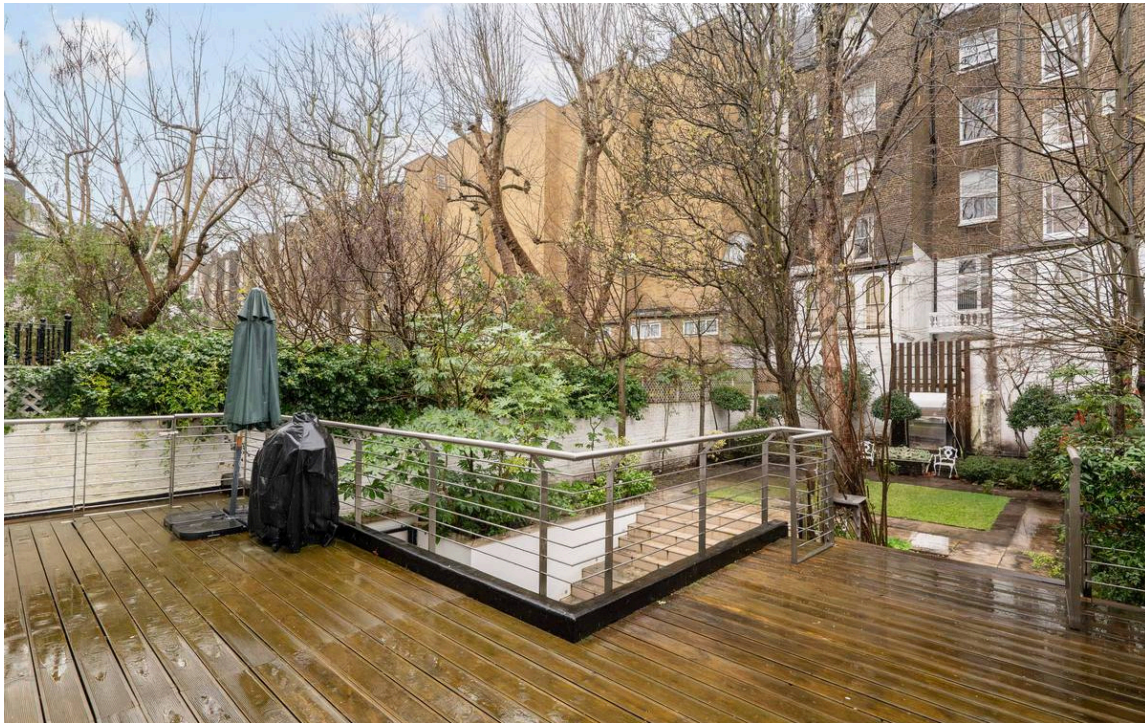




The Bedrooms

The well-proportioned principal bedroom is found on the first floor, with a walk-in wardrobe and ensuite bathroom. This floor features another bedroom, also ensuite, while a spectacular helical staircase connects the upper levels of the house. The second floor offers four more bedrooms and three more bathrooms, two of them ensuite.

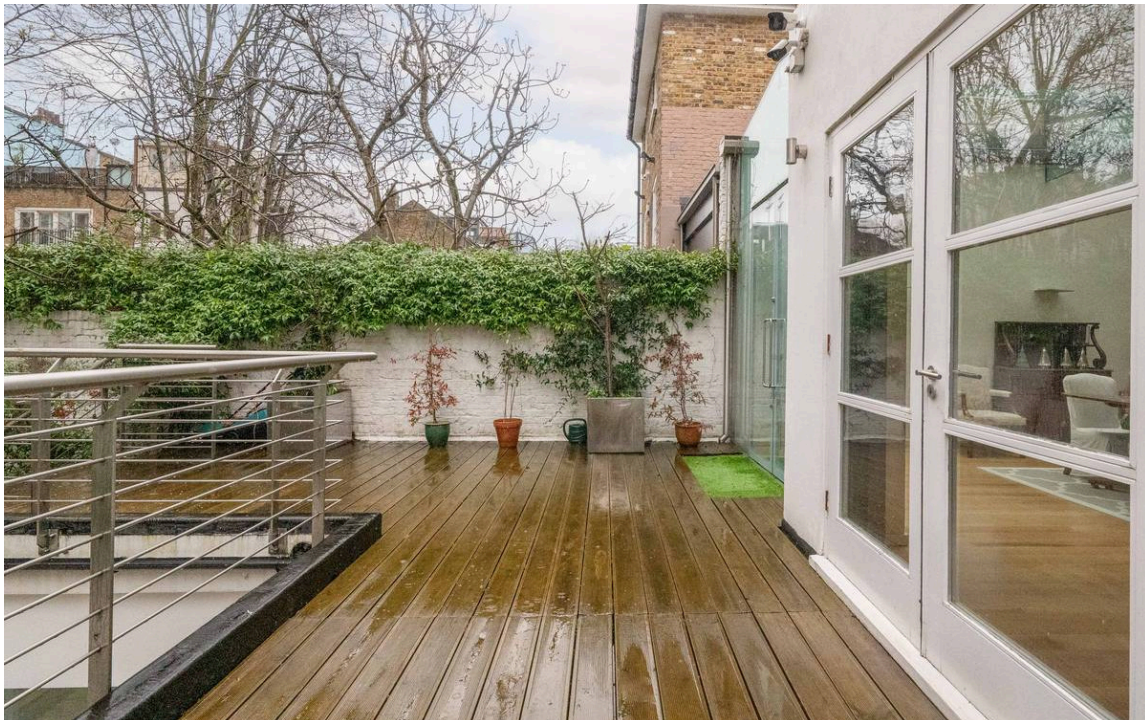




The Neighbourhood

The property has a large garden, including a terrace with wooden decking and a lawn.

Porchester Terrace is a wide and tree-lined street, originally laid out in the Regency period. It was later expanded in the Victorian era, and many of its semi-detached houses have stucco façades or dressings, with more modern properties placed between. From here, both Bayswater and Queensway stations are a short walk away, and beyond that lie the open spaces of Hyde Park. In addition, the nearby Whiteley's department store has recently been developed into a desirable shopping and dining destination.



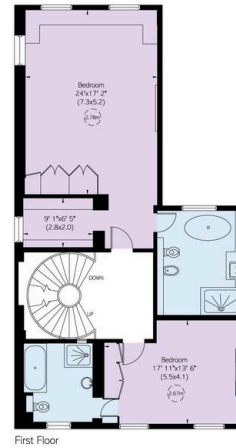
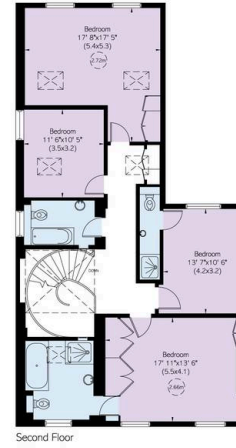
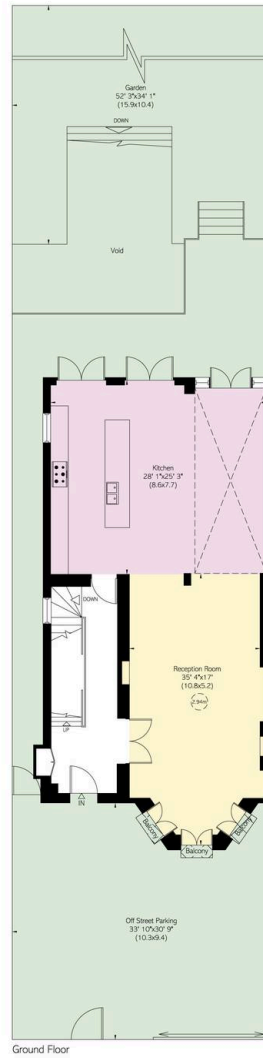
Porchester Terrace, W₂

**RUSSELL
SIMPSON**

Approximate Internal Area
6,681 sq ft / 621 sq m

Outside Area
3,546 sq ft / 329 sq m

This plan is for layout guidance only. Not drawn to scale unless stated. Windows and door openings are approximate. Whilst every care is taken in the preparation of this plan, please check all dimensions, shapes, and compass bearings before making any decisions reliant upon them.



**RUSSELL
SIMPSON**

Contact Us

+44 (0) 20 3761 9691

13 Kensington Square
London
W8 5HD

kensington@russellsimpson.co.uk