

**RUSSELL
SIMPSON**

A freshly decorated two bedroom
flat

POINT WEST
SOUTH KENSINGTON SW7

Point West

£825 P/W

<div>BEDROOMS</div> <div>2-2</div>	<div>INTERNAL</div> <div>940 <small>SQ FT</small></div> <div>87 <small>SQM</small></div>	<div>OUTDOOR</div> <div>—</div>	<div>FURNISHED STATUS</div> <div>Furnished</div>
<div>BATHROOMS</div> <div>2-2</div>		<div>EPC</div> <div>C</div>	<div>COUNCIL TAX</div> <div>RBKC, G</div>



The Property

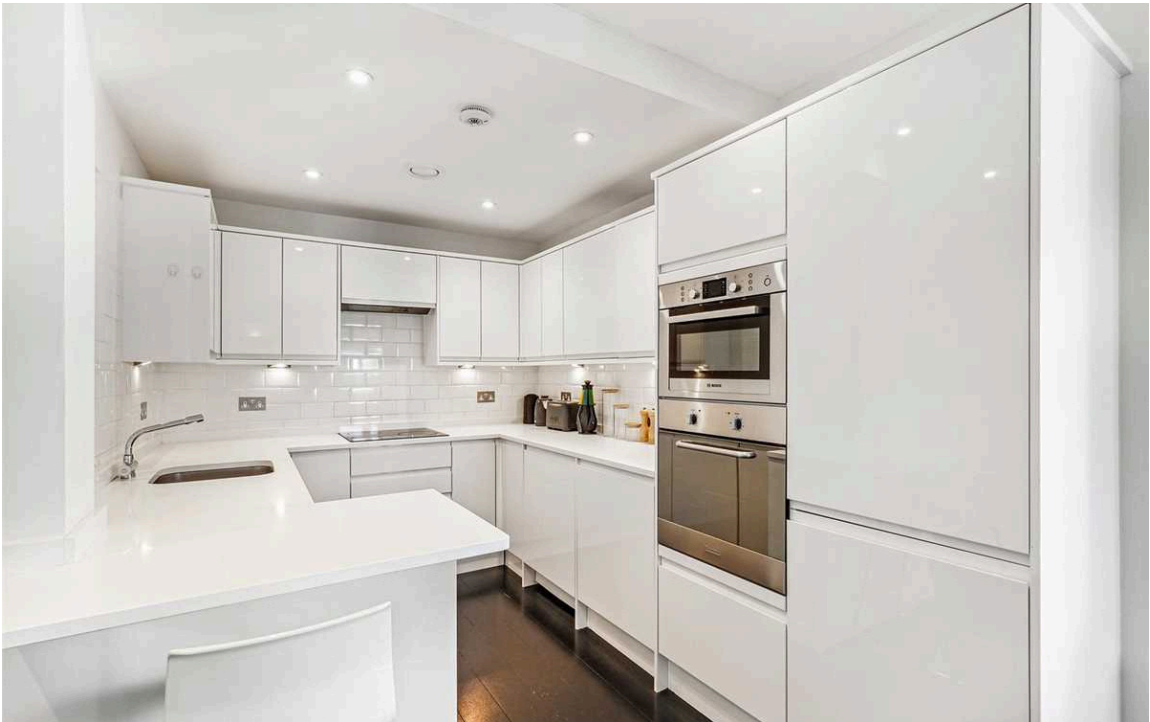
A recently refurbished two double bedroom west facing apartment on the 5th floor of this portered modern block. The flat offers spectacular westerly views across London, and there is a secure underground parking available by separate negotiation.

img 1

Dining Area

img 2

Kitchen

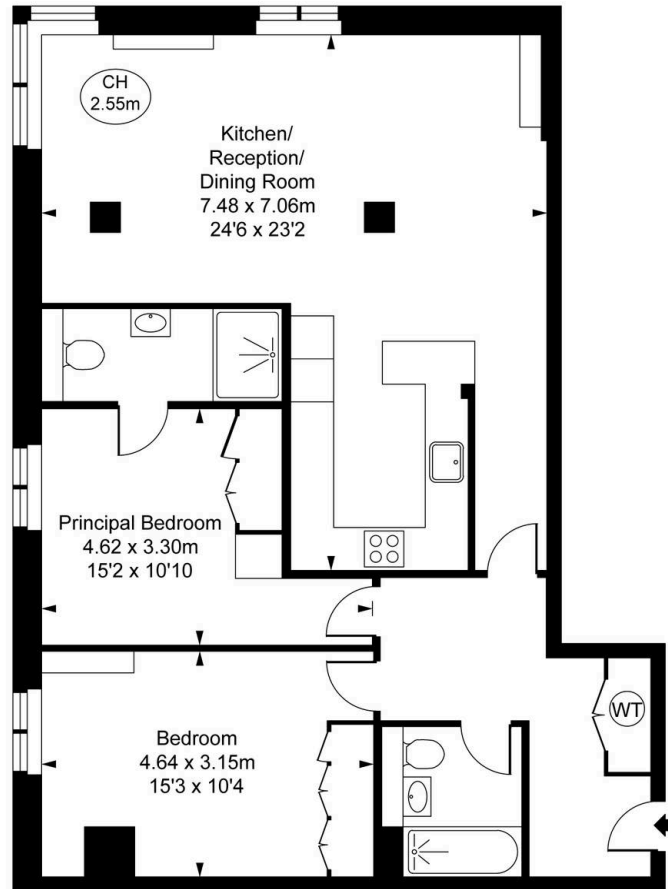




The Neighbourhood

Convenient location with Sainsbury's on your doorstep and within 5 minutes walk of Gloucester Road underground to Piccadilly, District and Circle Lines and local amenities. Easy access to Heathrow Airport and short distance to Harrods, V&A Museum, Hyde Park and much more.

Point West,
Cromwell Road, SW7
Approximate Gross Internal Area
87.34 sq m / 940 sq ft
(CH = Ceiling Heights)



Fifth Floor

This plan is not to scale. It is for guidance and not for valuation purposes.
All measurements and areas are approximate only, and have been prepared in accordance with the current edition of the RICS Code of Measuring Practice.
© Fulham Performance

**RUSSELL
SIMPSON**

Contact Us

+44 (0) 20 7225 0277

151A Sydney Street
London
SW3 6NT

chelsea@russellsimpson.co.uk

In accordance with the Property Mis-Description Act 1991, the following details have been prepared in good faith, and are not intended to constitute part of an offer or contract. Any information contained herein (whether in the text, plans or photographs) is given in good faith but should not be relied upon as being a statement of representation of fact. Nothing in these Particulars shall be deemed to be a statement that the property is in good condition or otherwise nor that any services or facilities are in good working order. Any measurements of distances referred to herein are approximate only. October 2021