

RUSSELL SIMPSON

A freshly decorated two bedroom
flat

POINT WEST
SOUTH KENSINGTON SW7

Point West

£825 P/W

BEDROOMS 2-2	INTERNAL 940 <small>SQ FT</small>	OUTDOOR —	FURNISHED STATUS Furnished
BATHROOMS 2-2	87 <small>SQM</small>	EPC C	COUNCIL TAX RBKC, G



The Property

A recently refurbished two double bedroom west facing apartment on the 5th floor of this portered modern block. The flat offers spectacular westerly views across London, and there is a secure underground parking available by separate negotiation.

img 1

Dining Area

img 2

Kitchen

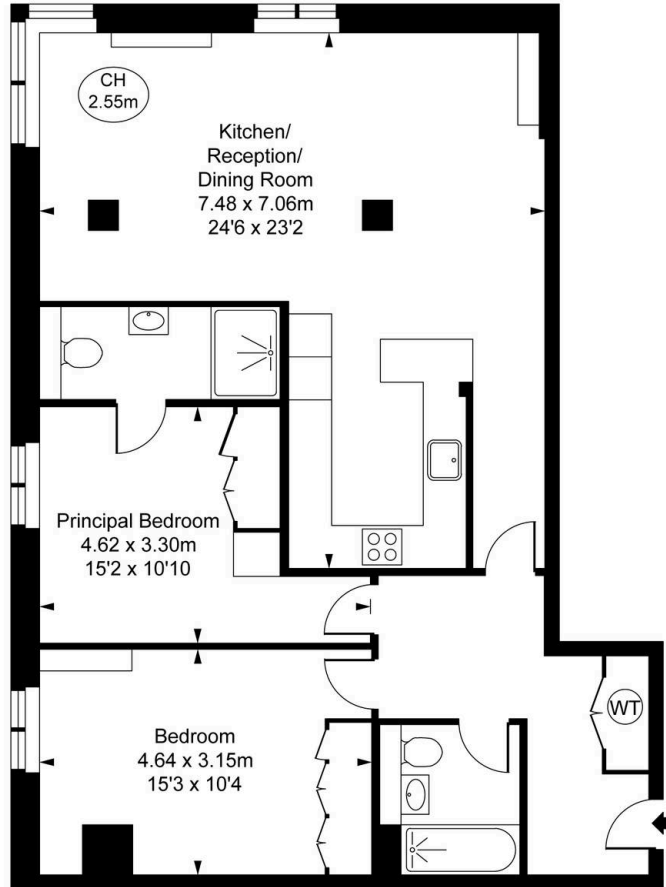




The Neighbourhood

Convenient location with Sainsbury's on your doorstep and within 5 minutes walk of Gloucester Road underground to Piccadilly, District and Circle Lines and local amenities. Easy access to Heathrow Airport and short distance to Harrods, V&A Museum, Hyde Park and much more.

Point West,
Cromwell Road, SW7
Approximate Gross Internal Area
87.34 sq m / 940 sq ft
(CH = Ceiling Heights)



Fifth Floor

This plan is not to scale. It is for guidance and not for valuation purposes.
All measurements and areas are approximate only, and have been prepared in accordance with the current edition of the RICS Code of Measuring Practice.
© Fulham Performance

**RUSSELL
SIMPSON**

Contact Us

+44 (0) 20 7225 0277

Contact us

info@russellsimpson.co.uk

Sydney Street

+44 (0) 20 7225 0277

151A Sydney Street

London

SW3 6NT

chelsea@russellsimpson.co.uk

Kensington Square

+44 (0) 20 3761 9691

13 Kensington Square

London

W8 5HD

kensington@russellsimpson.co.uk