

## **RUSSELL SIMPSON**

Sophisticated two-bedroom flat in a  
new development in the heart of  
Notting Hill

PEMBRIDGE GARDENS  
NOTTING HILL W2

# Pembridge Gardens

£1,800 P/W

BEDROOMS 2	INTERNAL 901 <small>SQ FT</small>	OUTDOOR —	FURNISHED STATUS Furnished
BATHROOMS 2	83 <small>SQM</small>	EPC C	COUNCIL TAX Westminster City, G



## The Property

Conveniently located flat with bright interiors, air conditioning and underfloor heating

Stepping into the flat on the second floor, the entrance hall leads into a generous living area. This includes an open-plan kitchen occupying the corner, as well as separate dining and seating areas. A pair of south-facing windows fill the space with light.



## Indoor Spaces

The property is decorated in a calm and comfortable modern style. The redeveloped interiors include air conditioning and underfloor heating throughout.

The flat also includes two bedrooms. The principal bedroom has an ensuite bathroom and inbuilt wardrobe space, while the second bedroom has a bathroom next door.

---

img 1

Principal Bedroom

img 2

Ensuite



# The Neighbourhood

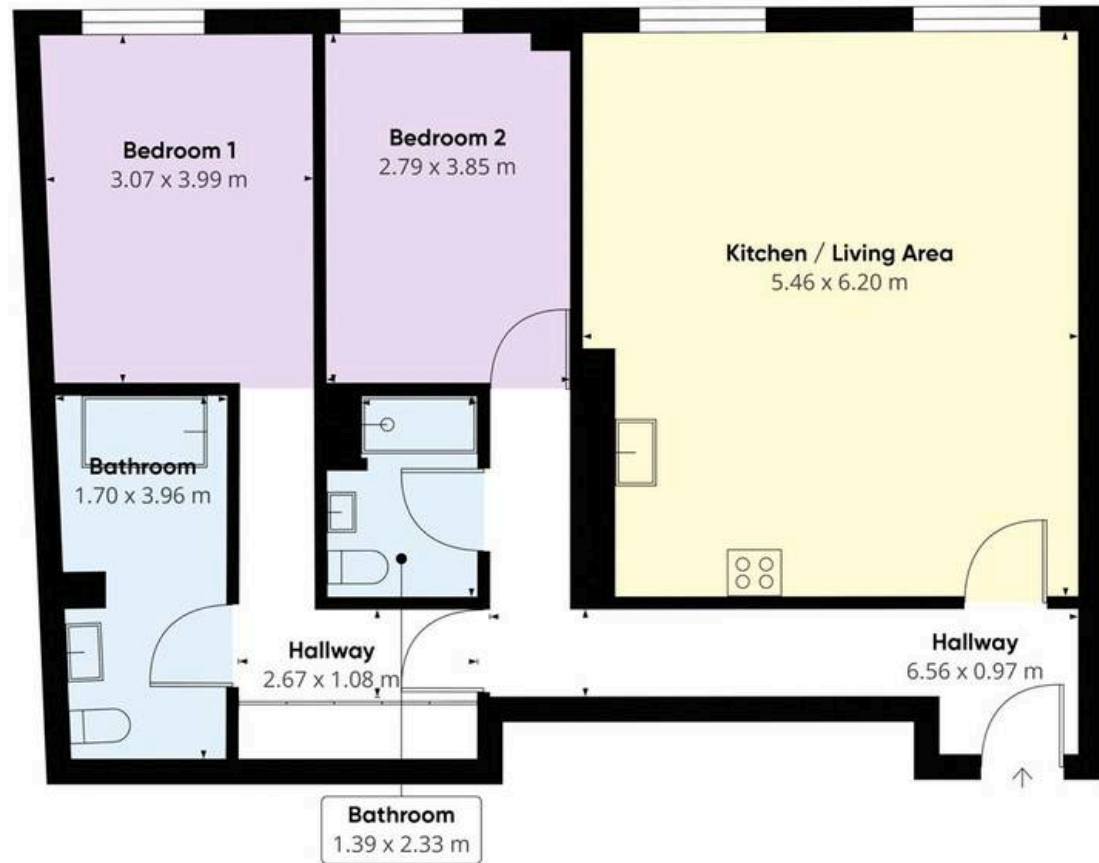
The flat is part of a new development that combines a traditional townhouse with a modern apartment block containing a lift.

Pembridge Gardens is a beautiful street lined with white stucco townhouses. From here, the many restaurants and independent boutiques of Notting Hill are close. Notting Hill Gate underground station is a few moments' walk away, while the open spaces of Kensington Gardens and Hyde Park are also nearby.

Pembridge Gardens,  
W2

**Approximate Total Area**  
83.74 sq m

**RUSSELL  
SIMPSON**



This plan is for layout guidance only. Not drawn to scale unless stated. Windows and door openings are approximate. Whilst every care is taken in the preparation of this plan. Please check all dimensions, shapes, and compass bearings before making any decisions reliant upon them.

**RUSSELL  
SIMPSON**

---

## Contact Us

+44 (0) 20 7225 0277

Contact us

[info@russellsimpson.co.uk](mailto:info@russellsimpson.co.uk)

---

## Sydney Street

+44 (0) 20 7225 0277

151A Sydney Street

London

SW3 6NT

[chelsea@russellsimpson.co.uk](mailto:chelsea@russellsimpson.co.uk)

---

## Kensington Square

+44 (0) 20 3761 9691

13 Kensington Square

London

W8 5HD

[kensington@russellsimpson.co.uk](mailto:kensington@russellsimpson.co.uk)