



## **RUSSELL SIMPSON**

Bright and stylish two-bedroom flat  
on a gated Chelsea street with  
communal garden

DEVONSHIRE MEWS  
CHELSEA SW10

# Devonshire Mews

Let

BEDROOMS 2	INTERNAL 1,159 SQ FT	OUTDOOR 7 SQ FT	FURNISHED STATUS Furnished
BATHROOMS 2	107 SQM	EPC —	COUNCIL TAX RBKC, G



## The Property

Large lateral flat with contemporary interiors and light-filled reception room in excellent condition

Entering the flat on the first floor, the front hall leads through to a wide reception room. This includes an open-plan kitchen with a breakfast bar, a dining area and a seating area. South-west facing windows fill this space with light, while the French door opens onto a Juliet balcony with views over the communal garden.

---

img 1

Kitchen

img 2

Seating Area





## Indoor Spaces

The flat is decorated in a relaxed contemporary style. Its well-lit and fashionable interiors are presented in very condition.

The other side of the flat features a pair of bedrooms and a pair of bathrooms. The principal bedroom is ensuite, while both rooms have inbuilt storage space.

---

img 1

Principal Bedroom





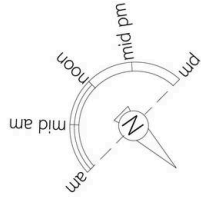
## Outdoor Spaces

The property includes a pair of balconies and has access to communal gardens. Furthermore, the building has a lift.



## The Neighbourhood

Devonshire Mews is a gated mews leading off Park Walk. Residents have shared use of a private communal garden with a paved seating area. The mews is conveniently positioned midway between the King's Road and the Fulham Road, meaning that many of Chelsea's excellent shops and restaurants are close by. In addition, South Kensington underground station is a short walk away.



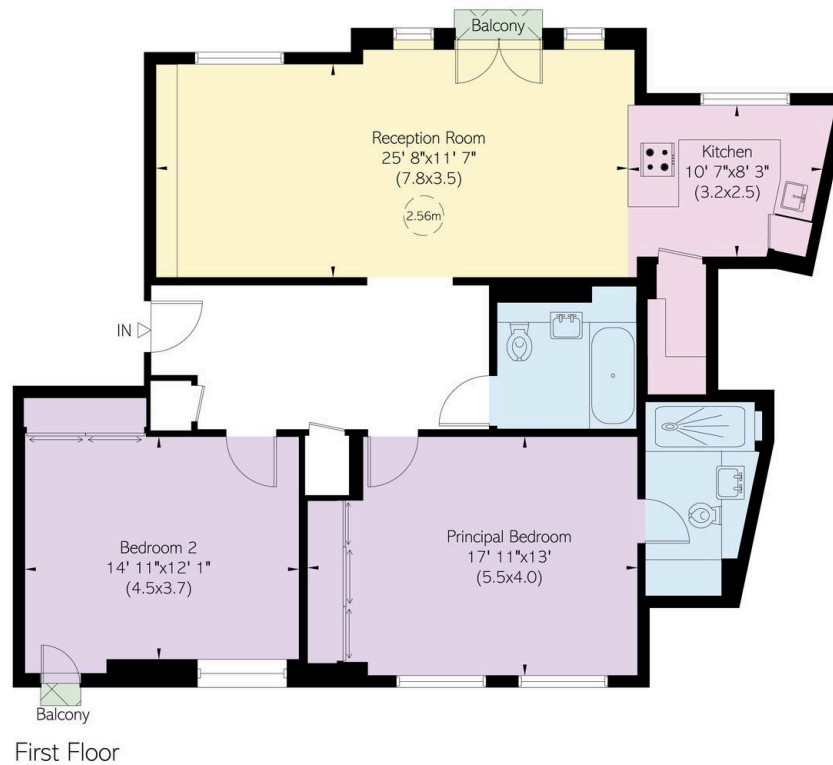
## Devonshire Mews, Park Walk, SW10

**RUSSELL  
SIMPSON**

**Approximate Internal Area**  
1,159 sq ft/ 108 sq m

**Outside Area**  
7 sq ft/ 1 sq m

This plan is for layout guidance only. Not drawn to scale unless stated. Windows and door openings are approximate. Whilst every care is taken in the preparation of this plan, please check all dimensions, shapes, and compass bearings before making any decisions reliant upon them.



**RUSSELL  
SIMPSON**

---

## Contact Us

+44 (0) 20 7225 0277

151A Sydney Street  
London  
SW3 6NT

[chelsea@russellsimpson.co.uk](mailto:chelsea@russellsimpson.co.uk)