



RUSSELL SIMPSON

Magnificent four-bedroom white
stucco townhouse on a prestigious
Kensington street to rent

PALACE GARDENS TERRACE
KENSINGTON W8

Palace Gardens Terrace

£7,500 _{P/W}

BEDROOMS 4	INTERNAL 4,182 _{SQ FT} 388 _{SQM}	OUTDOOR 1,260 _{SQ FT}	FURNISHED STATUS Furnished
BATHROOMS 3		EPC D	COUNCIL TAX RBKC, H



The Property

Spacious family home with garden conservatory and home gym close to Kensington Gardens

Entering the house on the raised ground floor, the front hall opens onto a generous dining room. This flows through to a kitchen with fitted units, while high ceilings and wooden floors create a sense of brightness and opulence. This level also features a study, leading into a light-filled conservatory with access to the garden.



Indoor Spaces

This impressive family home is decorated in a classical style to suit the prestigious settings and presented in good condition.

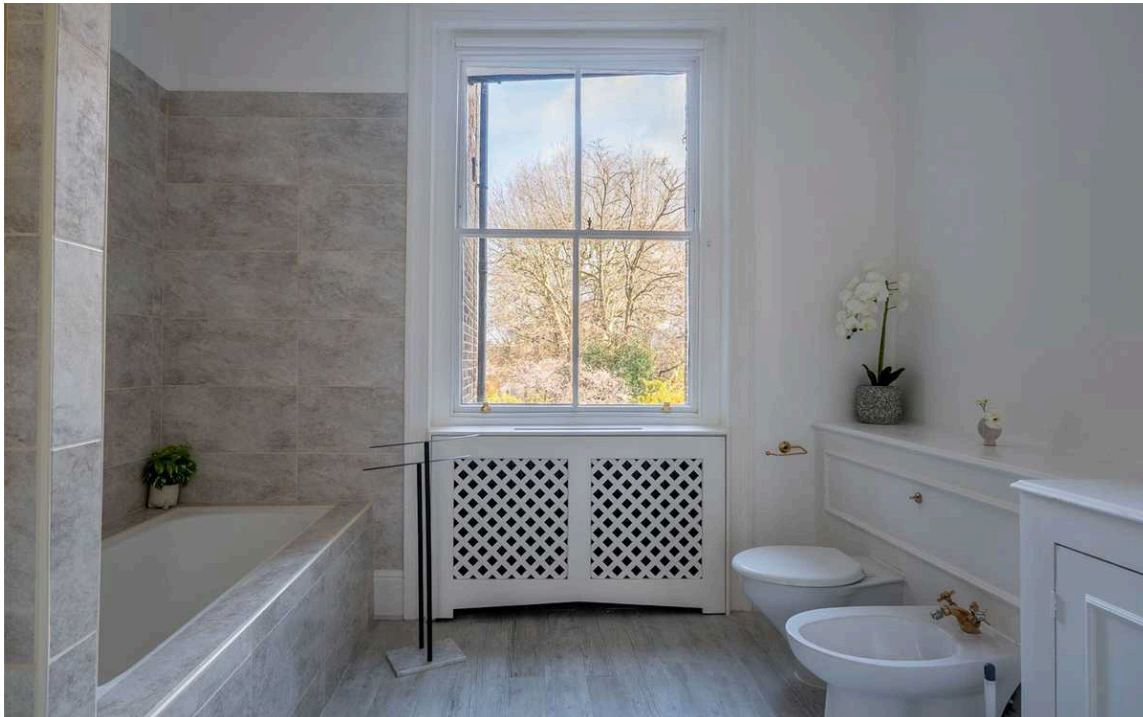
The first floor is entirely occupied by an impressive reception room. Moulded ceilings, panelled shutters, an ornate cornice and an elegant fireplace all add to the sense of grandeur. Meanwhile, French doors on the half-landing give access to a terrace.

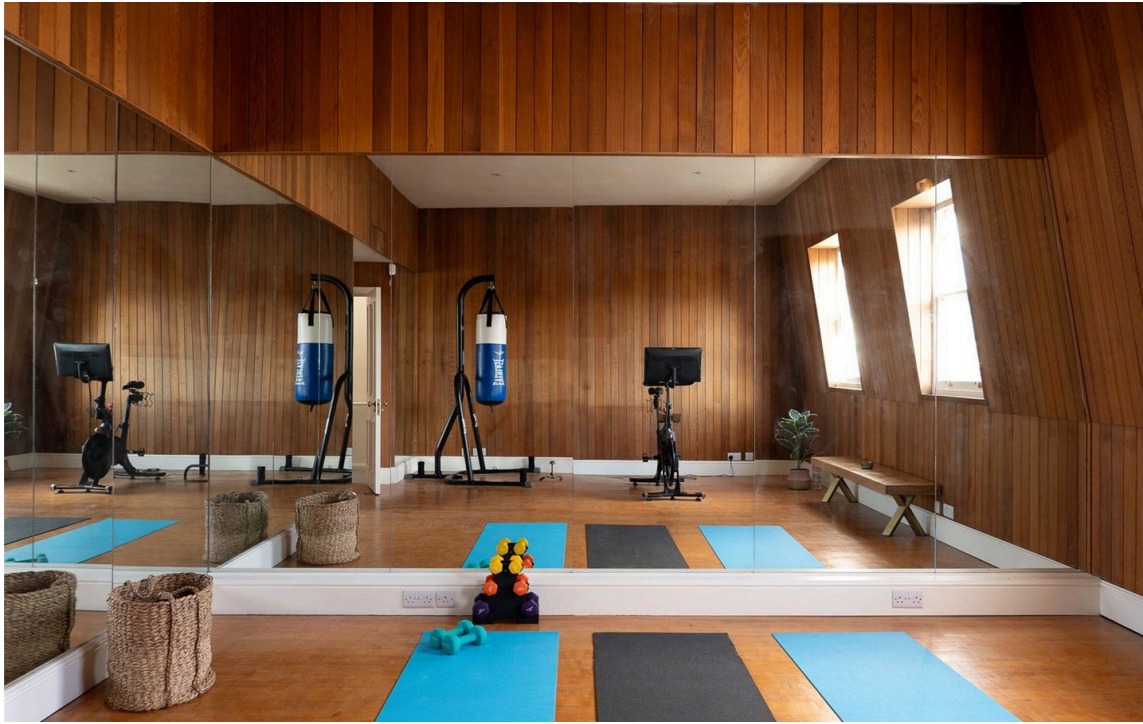




The Bedrooms

The second floor features the principal bedroom suite, including a bedroom, a corridor wardrobe and a well-proportioned bathroom with a bath. The third floor offers three more bedrooms, sharing a bathroom.





Amenities

The fourth floor currently consists of a home gym with an ensuite bathroom and sauna. It includes tongue-and-groove cladding for the walls and beautiful rooftop views from the windows.



Outdoor Spaces

The house includes a large rear garden with a lawn, a first-floor terrace with enough space for outdoor seating, and a front balcony overlooking the street. There are also two patios on the lower ground floor with access to outdoor storage.





The Neighbourhood

Palace Gardens Terrace is a sought-after street of white stucco town houses running south from Notting Hill Gate. The street is lined with trees, while the houses are set back from the pavement, giving added privacy.

From here, the open spaces of Kensington Gardens and Hyde Park are a short walk away. In addition, Notting Hill Gate underground station is nearby, while the exclusive restaurants and shops of Kensington High Street are also close.



Palace Gardens Terrace, W8

**RUSSELL
SIMPSON**

Approx. gross internal area
4182 Sq Ft / 388.55 Sq M
(Excluding Vaults)

Approx. vaults area
107 Sq Ft / 10.03 Sq M

TOTAL approx. gross internal area
4290 Sq Ft / 398.58 Sq M

Approx. outdoor area
1260 Sq Ft / 117.1 Sq M

This plan is for layout guidance only. Not drawn to scale unless stated. Windows and door openings are approximate. Whilst every care is taken in the preparation of this plan, please check all dimensions, shapes, and compass bearings before making any decisions reliant upon them.



**ALEX
WINSHIP**
Photography

*Floorplan for guidance only, not to scale or valuation purposes. It must not be relied upon as a statement of fact. All measurements and areas are approximate and have been prepared in accordance with the current edition of the RICS Code of Measuring Practice.



**RUSSELL
SIMPSON**

Contact Us

+44 (0) 20 3761 9691

13 Kensington Square
London
W8 5HD

kensington@russellsimpson.co.uk