



RUSSELL SIMPSON

Bright two-bedroom apartment near
Hyde Park

PALACE COURT
BAYSWATER W2

Palace Court

£895 P/W

<div>BEDROOMS</div> <div>2</div>	<div>INTERNAL</div> <div>972 <small>SQ FT</small></div> <div>90 <small>SQM</small></div>	<div>OUTDOOR</div> <div>—</div>	<div>FURNISHED STATUS</div> <div>—</div>
<div>BATHROOMS</div> <div>2</div>		<div>EPC</div> <div>C</div>	<div>COUNCIL TAX</div> <div>Westminster City, H</div>

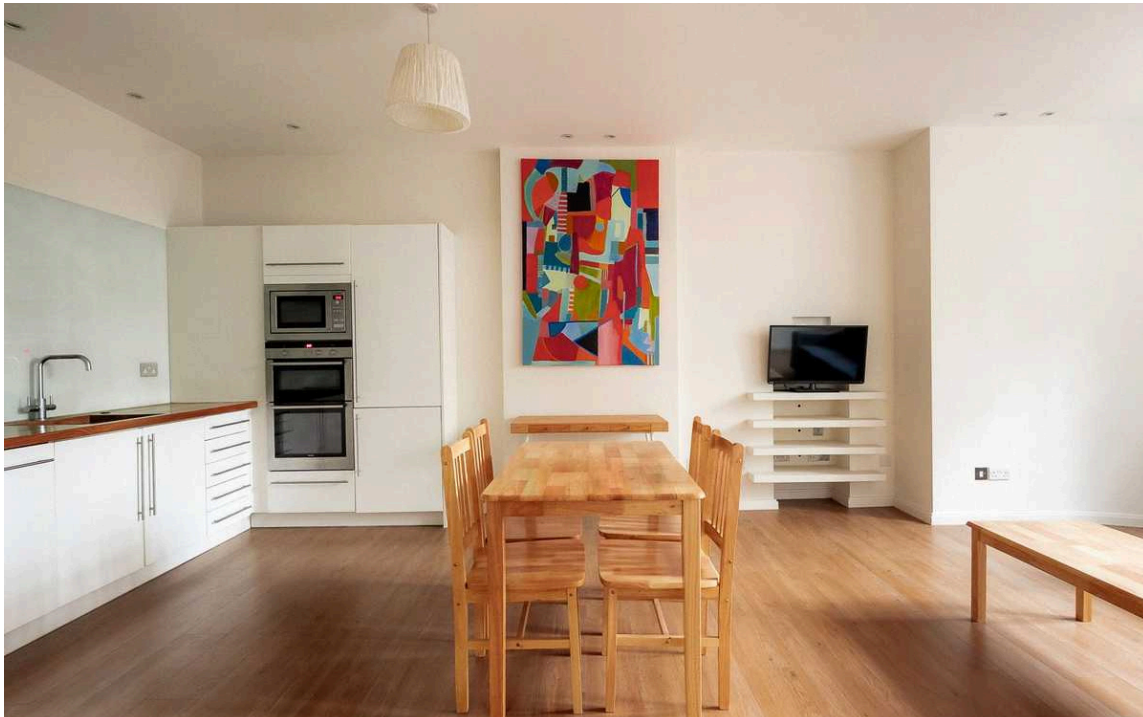


The Property

A well-presented two-bedroom apartment on the lower ground floor.

Entering the flat, you step into a generous open-plan reception room and kitchen that spans the width of the property. The living and dining area flows seamlessly into the kitchen. The wooden floors throughout this level add warmth to the bright, light-filled space.

Beyond the main living area, a corridor leads to the two bedrooms. The principal bedroom is well-proportioned and benefits from natural light, with an ensuite bathroom. The second bedroom offers flexible accommodation and is served by a separate bathroom, completing the practical layout of this thoughtfully designed apartment.



img 1

Living Room

img 2

Dining

The Neighbourhood

Palace Court is situated in the heart of Bayswater, moments away from Hyde Park's open spaces. The location provides excellent transport links with Bayswater and Queensway stations within easy reach, offering direct access to central London. The area features numerous restaurants, cafes and shops along Queensway, while the peaceful garden squares characteristic of this part of W2 add to the neighbourhood's residential appeal.

Palace Court,
W2

Approx Gross Internal Area

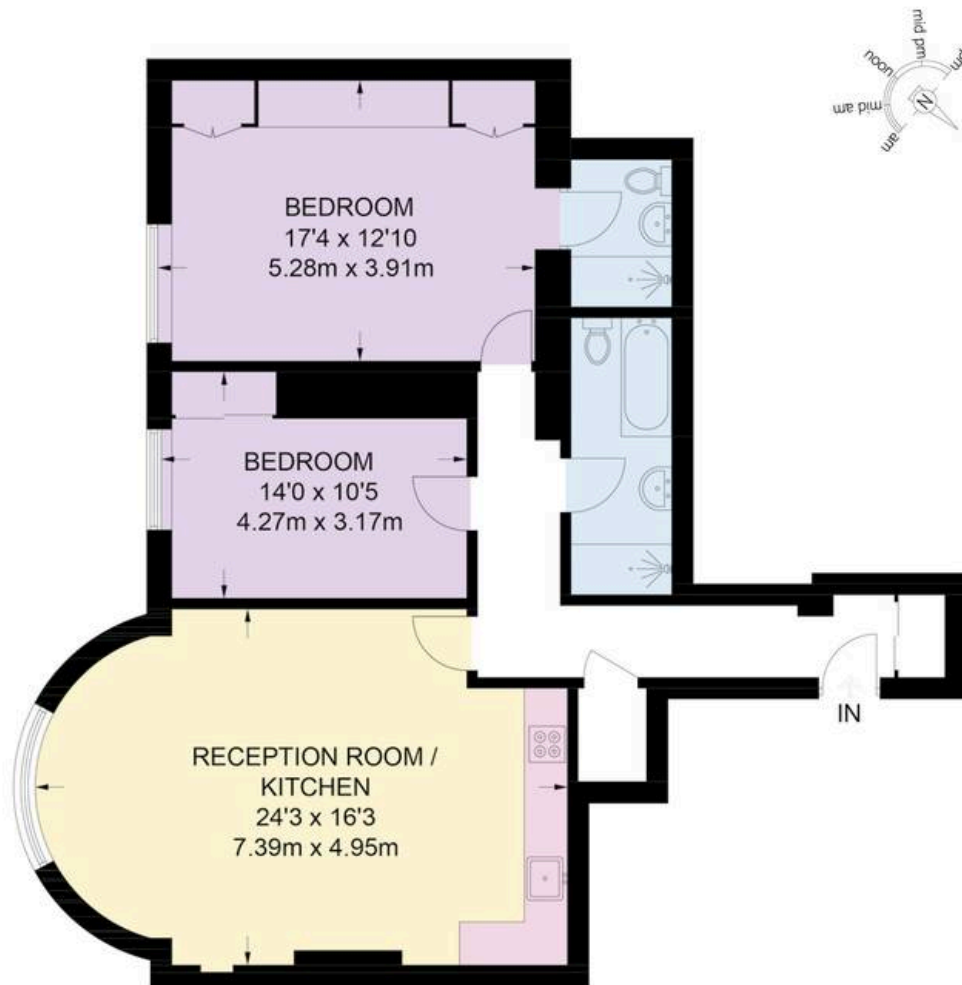
972 sq ft / 90.3 sq m

Including Limited Use Area

9 sq ft / 0.8 sq m

**RUSSELL
SIMPSON**

This plan is for layout guidance only. Not drawn to scale unless stated. Windows and door openings are approximate. Whilst every care is taken in the preparation of this plan. Please check all dimensions, shapes, and compass bearings before making any decisions reliant upon them.



LOWER GROUND FLOOR

**RUSSELL
SIMPSON**

Contact Us

+44 (0) 20 3761 9691

13 Kensington Square
London
W8 5HD

kensington@russellsimpson.co.uk