



## **RUSSELL SIMPSON**

Charming Edwardian semi-detached  
house

OXFORD GARDENS  
NORTH KENSINGTON W10

# Oxford Gardens

£3,000 P/W

BEDROOMS 4	INTERNAL 2,137 SQ FT	OUTDOOR 477 SQ FT	FURNISHED STATUS Furnished
BATHROOMS 3	198 SQM	EPC D	COUNCIL TAX RBKC, G

# The Property

The property boasts a lovely garden, patio, air conditioning and comes fully furnished.



img 1

Dining



## Indoor Spaces

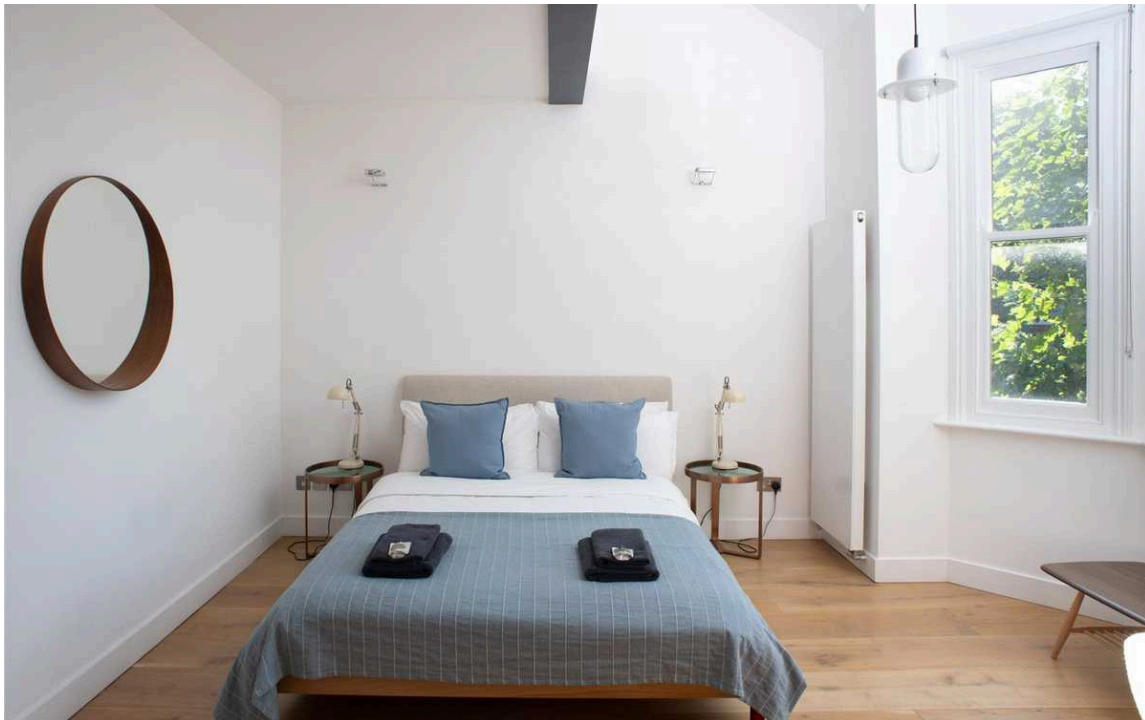
A charming Edwardian semi-detached house, boasting period features and modern conveniences.



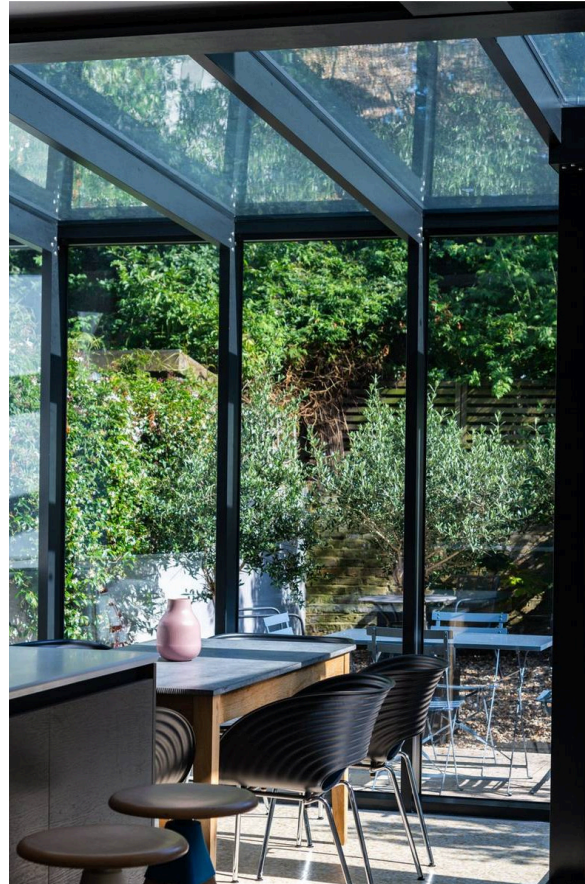


## The Bedrooms

With four double bedrooms, this fully furnished property offers a perfect blend of character and comfort.



# The Design





## The Neighbourhood

The spacious garden and patio provide an ideal outdoor space, perfect for entertaining or relaxing. Stay cool in the summer months with the added bonus of air conditioning throughout the property.

Situated in a sought-after neighbourhood, on one of North Kensington's most residential areas, while still being conveniently located near Notting Hills fantastic amenities and transport links.

Oxford Gardens,  
W10

**Approx Gross Internal Area**

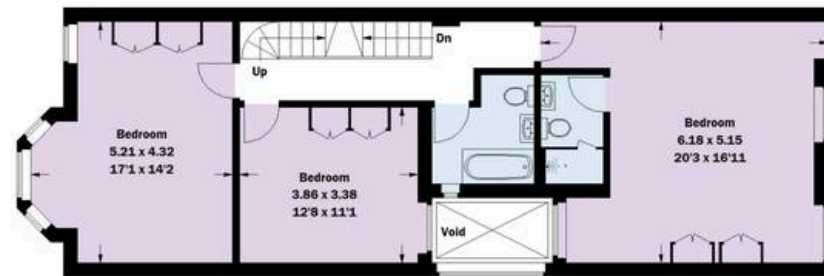
2,137 sq ft / 198.5 sq m  
(Excluding Void)

**RUSSELL  
SIMPSON**

This plan is for layout guidance only. Not drawn to scale unless stated. Windows and door openings are approximate. Whilst every care is taken in the preparation of this plan. Please check all dimensions, shapes, and compass bearings before making any decisions reliant upon them.



SECOND FLOOR



FIRST FLOOR

= Reduced headroom below 1.5 m / 5'0



GROUND FLOOR



**RUSSELL  
SIMPSON**

---

## Contact Us

+44 (0) 20 7225 0277

Contact us

[info@russellsimpson.co.uk](mailto:info@russellsimpson.co.uk)

---

## Sydney Street

+44 (0) 20 7225 0277

151A Sydney Street  
London  
SW3 6NT

[chelsea@russellsimpson.co.uk](mailto:chelsea@russellsimpson.co.uk)

---

## Kensington Square

+44 (0) 20 3761 9691

13 Kensington Square  
London  
W8 5HD

[kensington@russellsimpson.co.uk](mailto:kensington@russellsimpson.co.uk)