



## **RUSSELL SIMPSON**

Elegant three bedroom flat with  
communal garden access in the heart  
of old Chelsea

ORMONDE GATE  
CHELSEA SW3

# Ormonde Gate

£3,750 P/W

BEDROOMS 3	INTERNAL 1,382 <small>SQ FT</small>	OUTDOOR 73 <small>SQ FT</small>	FURNISHED STATUS Furnished
BATHROOMS 3	128 <small>SQM</small>	EPC C	COUNCIL TAX RBKC, G

# The Property

Duplex flat with serene interiors in an Arts and Crafts building close to Burton Court

Entering the flat on the raised ground floor, the front hall leads through to generous reception room. A south-west-facing bay window brings in light from outside, with high ceilings and wooden floors adding to the sense of elegance.



img 2

Communal Garden Access



## Indoor Spaces

The property is decorated in a tasteful style and presented in good condition. Furthermore, it contains a coat room, a guest WC and a separate storage vault.

The opposite side of the hall features a fitted kitchen and dining room, with double French doors leading onto the rear terrace.





## The Bedrooms

The lower-ground floor offers three bedrooms. The principal bedroom has a pair of bathrooms and double French doors leading onto a patio. The other two bedrooms share a bathroom, while this level also offers inbuilt storage space.





## The Neighbourhood

The flat has a rear terrace with enough space for outdoor seating. It leads directly into the communal garden.

Ormonde Gate lies in the heart of old Chelsea, lined by picturesque Arts and Crafts properties. From here, the many restaurants and shops of the Kings' Road are within easy reach, as well as the beautiful grounds of the Chelsea Physic Garden.

Teviot House  
26 Ormonde Gate  
SW3

**Approx Gross Internal Area**  
1,382 sq ft / 128 sq m

**Approx External Area**  
73 sq ft / 6.75 sq m

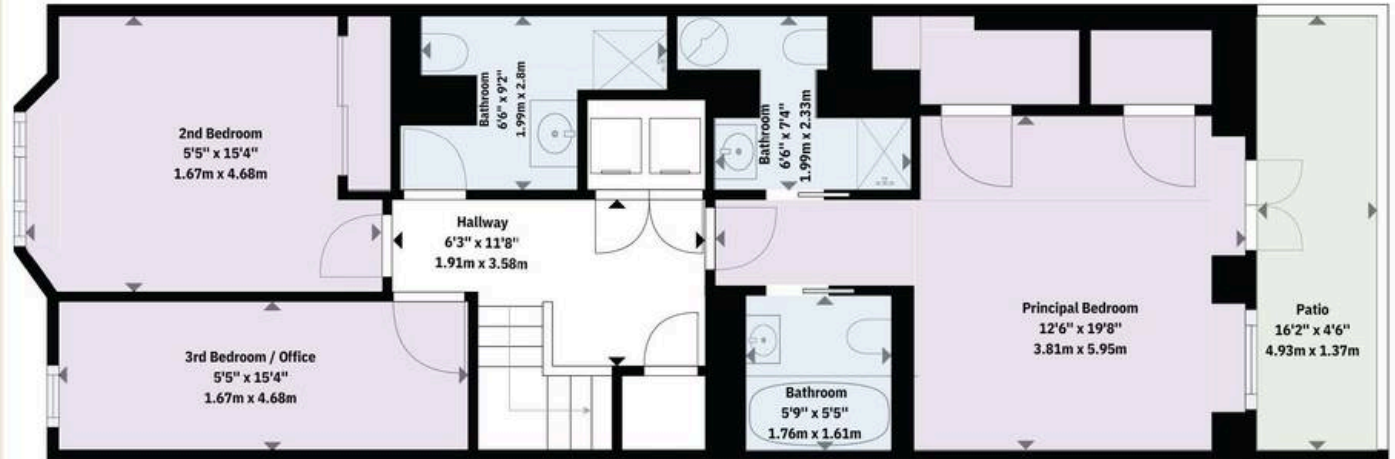
**RUSSELL  
SIMPSON**

This plan is for layout guidance only. Not drawn to scale unless stated. Windows and door openings are approximate. Whilst every care is taken in the preparation of this plan. Please check all dimensions, shapes, and compass bearings before making any decisions reliant upon them.

Ground Floor



Lower Ground Floor



**RUSSELL  
SIMPSON**

---

## Contact Us

+44 (0) 20 7225 0277

Contact us

[info@russellsimpson.co.uk](mailto:info@russellsimpson.co.uk)

---

## Sydney Street

+44 (0) 20 7225 0277

151A Sydney Street

London

SW3 6NT

[chelsea@russellsimpson.co.uk](mailto:chelsea@russellsimpson.co.uk)

---

## Kensington Square

+44 (0) 20 3761 9691

13 Kensington Square

London

W8 5HD

[kensington@russellsimpson.co.uk](mailto:kensington@russellsimpson.co.uk)