



## **RUSSELL SIMPSON**

An immaculately presented three  
bedroom apartment

MALVERN COURT  
SOUTH KENSINGTON SW7

# Malvern Court

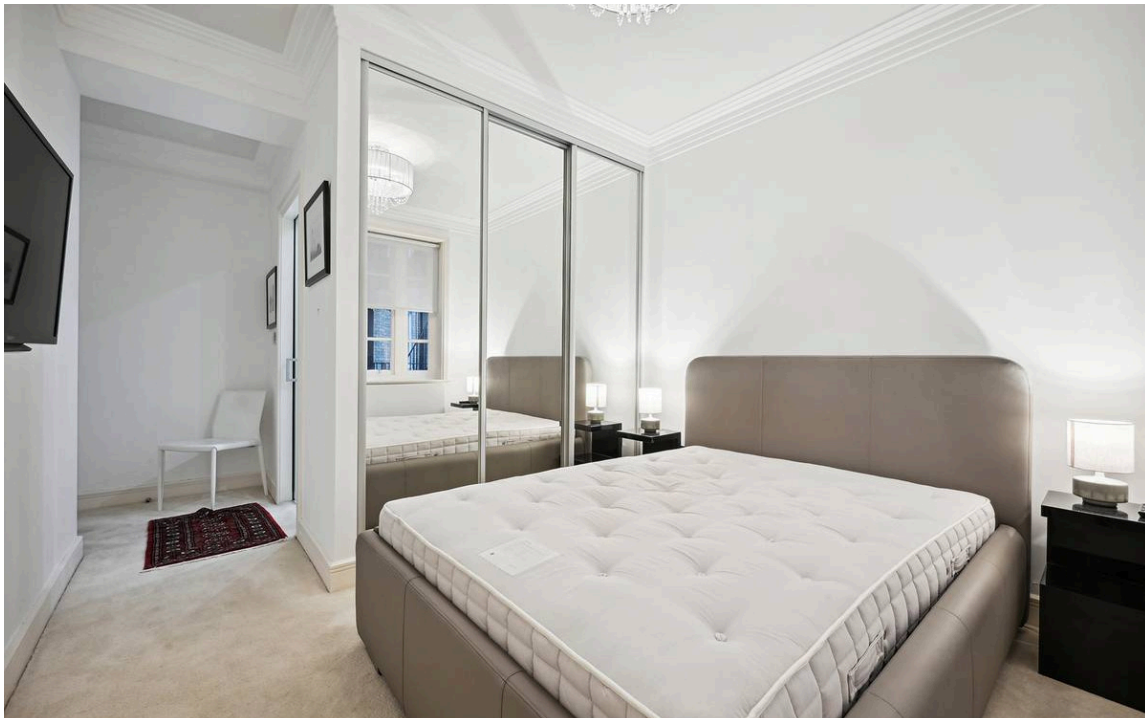
£1,300 P/W

BEDROOMS 3	INTERNAL 1,222 <small>SQ FT</small>	OUTDOOR —	FURNISHED STATUS Furnished
BATHROOMS 2	113 <small>SQM</small>	EPC C	COUNCIL TAX RBKC



## The Property

This apartment is perfectly positioned for all that South Kensington has to offer.





## Indoor Spaces

Laid out across the second floor, all rooms are on the same level. There is a modern kitchen with space for informal dining, which has all the modern appliances expected. The large living room looks over South Kensington and across Onslow Square, and has a more formal dining area to one end. The principle bedroom has good storage and a modern en suite bathroom, and there is also a well sized second double bedroom and family shower room. In addition, there is a 3rd single bedroom or nursery.



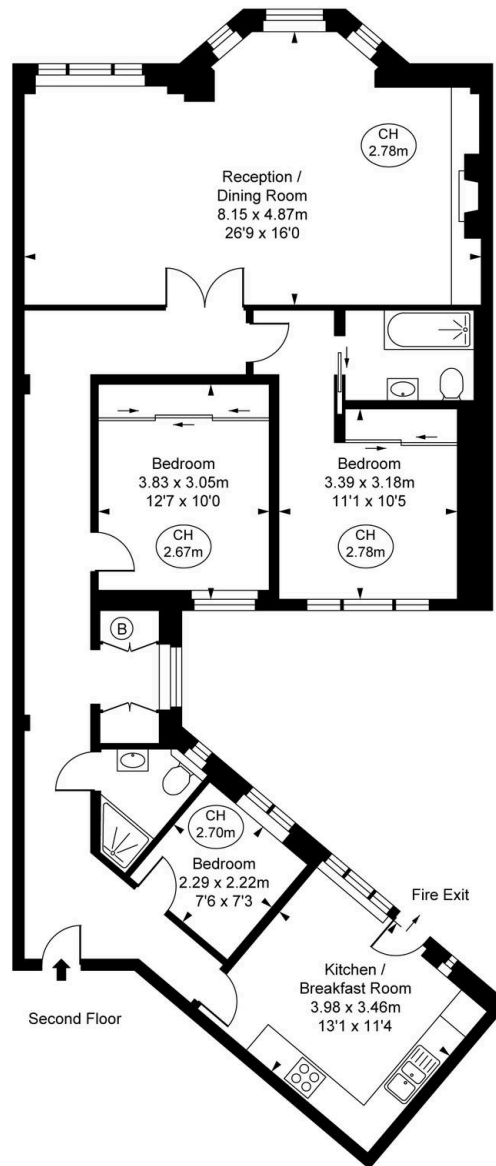


## The Neighbourhood

Malvern Court is well situated in close proximity to the plethora of shops, restaurants and museums of South Kensington, alongside the excellent transport links, with Knightsbridge and Sloane Square only a short walk away.

Malvern Court, SW7  
Approximate Gross Internal Area  
111.01 sq m / 1,195 sq ft

( CH = Ceiling Heights )



This plan is not to scale. It is for guidance and not for valuation purposes.  
All measurements and areas are approximate only, and have been prepared in accordance with the current edition of the RICS Code of Measuring Practice.  
© Fulham Performance

**RUSSELL  
SIMPSON**

---

## Contact Us

+44 (0) 20 7225 0277

151A Sydney Street  
London  
SW3 6NT

[chelsea@russellsimpson.co.uk](mailto:chelsea@russellsimpson.co.uk)