



RUSSELL SIMPSON

Elegant two-bedroom apartment
with a spacious terrace in South
Kensington

ONSLow GARDENS
SOUTH KENSINGTON SW7

Onslow Gardens

£3,500 P/W

BEDROOMS 2	INTERNAL 1,491 SQ FT	OUTDOOR 498 SQ FT	FURNISHED STATUS Furnished
BATHROOMS 2	138 SQM	EPC C	COUNCIL TAX RBKC, G



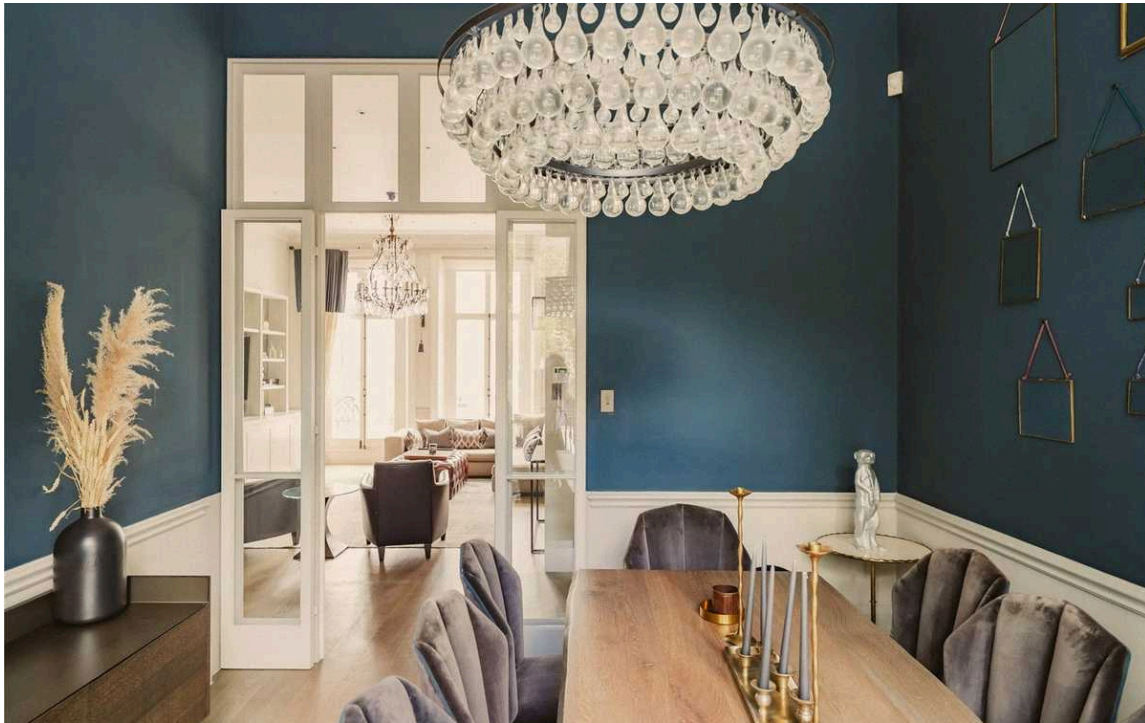
The Property

A beautifully proportioned apartment set across two floors with impressive ceiling heights and outdoor spaces

The Reception Room



Stepping into this charming apartment on the first floor, one is immediately struck by the generous proportions and abundant natural light. The heart of the home is the magnificent reception room, distinguished by its impressive 3.6-metre ceiling height and three large windows that flood the space with light. Period cornicing and architectural details enhance the room's refined character, while double doors lead seamlessly onto a private balcony.



The Kitchen

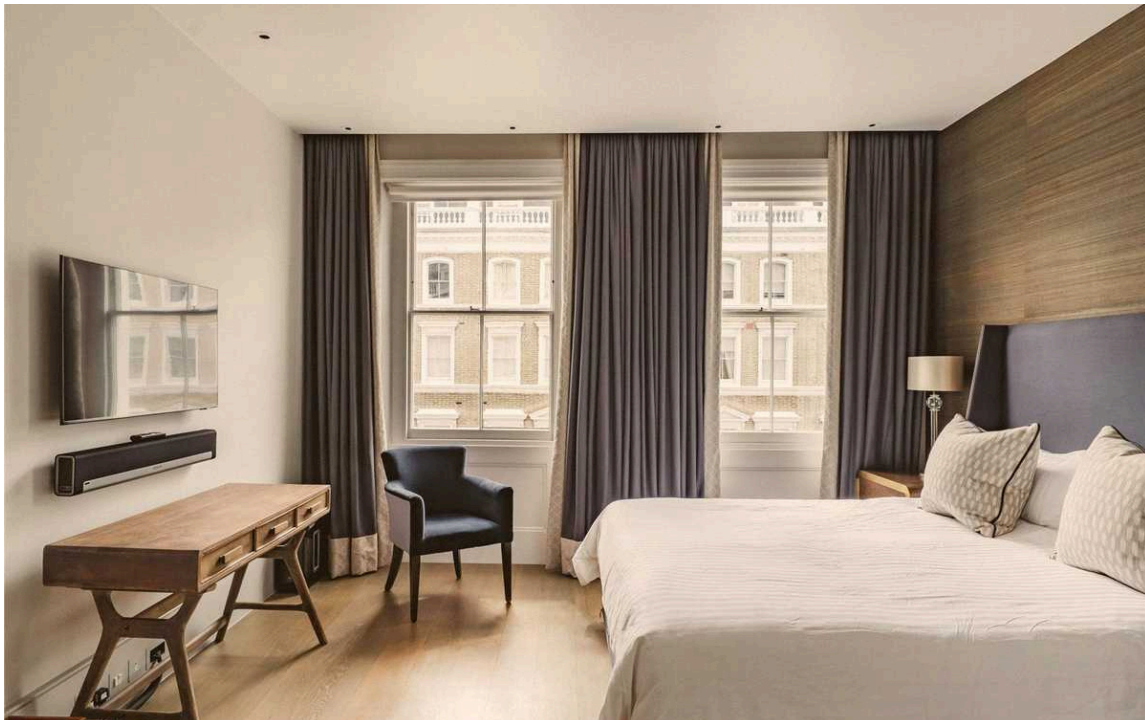
Adjacent to the reception room lies the formal dining area, offering an ideal setting for entertaining, with a wonderful connection to the outdoors, via access to a large terrace. The well-appointed kitchen features sleek cabinetry and integrated appliances, creating a functional cooking environment. Completing this floor is a guest WC.





The Bedrooms

Ascending to the second floor, the apartment offers two substantial bedrooms, each benefiting from their own en-suite bathroom. Both bedrooms are well-proportioned and bright, while the bathrooms are finished to a high standard with contemporary fixtures and natural stone elements.



Outdoor Spaces

The apartment benefits from a private terrace and balcony, providing delightful outdoor retreats. The balcony, accessed directly from the reception room, offers a charming space for morning coffee. The more substantial terrace extends from the dining area and has been thoughtfully arranged with seating areas, creating an excellent space for relaxation surrounded by greenery. Additionally, residents have access to the superb communal gardens, offering a tranquil green sanctuary in the heart of the city.





The Neighbourhood

Onslow Gardens is a prestigious address in South Kensington, characterised by its handsome period architecture and tree-lined streets. The property is moments away from the excellent amenities of the Fulham Road and Old Brompton Road, offering an array of cafés, restaurants, and boutique shops. South Kensington Underground station is within easy walking distance, providing swift connections across London. The area is also home to the cultural attractions of Exhibition Road, including the Victoria and Albert Museum, Natural History Museum, and Science Museum.

Onslow Gardens,
SW7

Approx Gross Internal Area

1,491 sq ft / 138.51 sq m

Outside Area

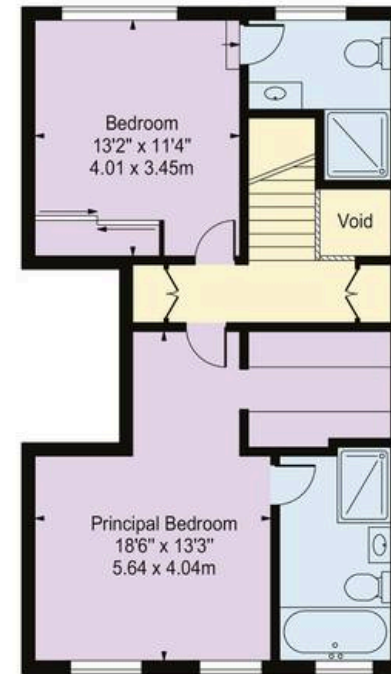
498 sq ft / 46.27 sq m

**RUSSELL
SIMPSON**

This plan is for layout guidance only. Not drawn to scale unless stated. Windows and door openings are approximate. Whilst every care is taken in the preparation of this plan. Please check all dimensions, shapes, and compass bearings before making any decisions reliant upon them.



FIRST FLOOR



SECOND FLOOR

**RUSSELL
SIMPSON**

Contact Us

+44 (0) 20 7225 0277

151A Sydney Street
London
SW3 6NT

chelsea@russellsimpson.co.uk