



RUSSELL SIMPSON

Sublime three bedroom flat with
superb facilities to rent in
Knightsbridge's most luxurious
development

ONE HYDE PARK
KNIGHTSBRIDGE SW1X

One Hyde Park

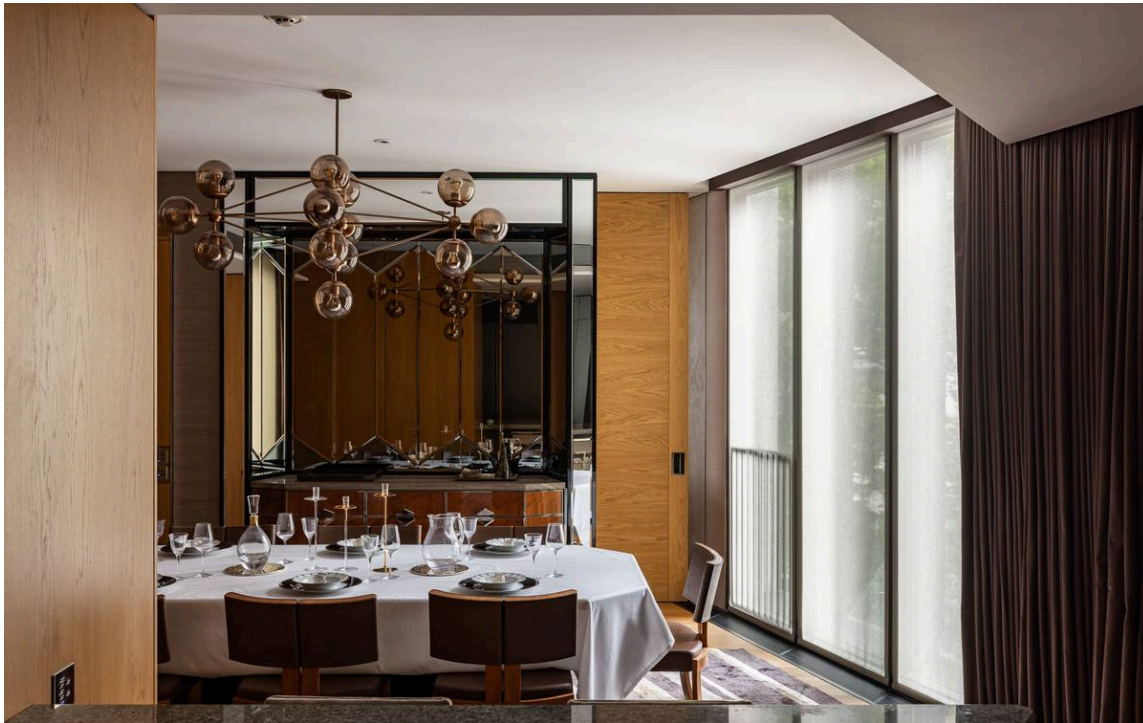
£9,750 _{P/W}

BEDROOMS 3	INTERNAL 3,748 _{SQ FT} 348 _{SQM}	OUTDOOR 106 _{SQ FT}	FURNISHED STATUS Furnished
BATHROOMS 3		EPC B	COUNCIL TAX Westminster City, H

The Property

Exceptional duplex flat in celebrated Candy Brothers building with access to pool, cinema, parking and 24-hour concierge service





Indoor Spaces

Stepping into the flat on the second floor, the entrance hall leads through to a central staircase hall. Beyond is a generous reception room with floor-to ceiling windows and sliding French doors that open onto a south-facing balcony, ensuring this space is filled with light. This floor also contains an elegant dining room that leads through to a convenient fitted kitchen. A bedroom with storage space and an adjacent bathroom completes this level.





The Bedrooms

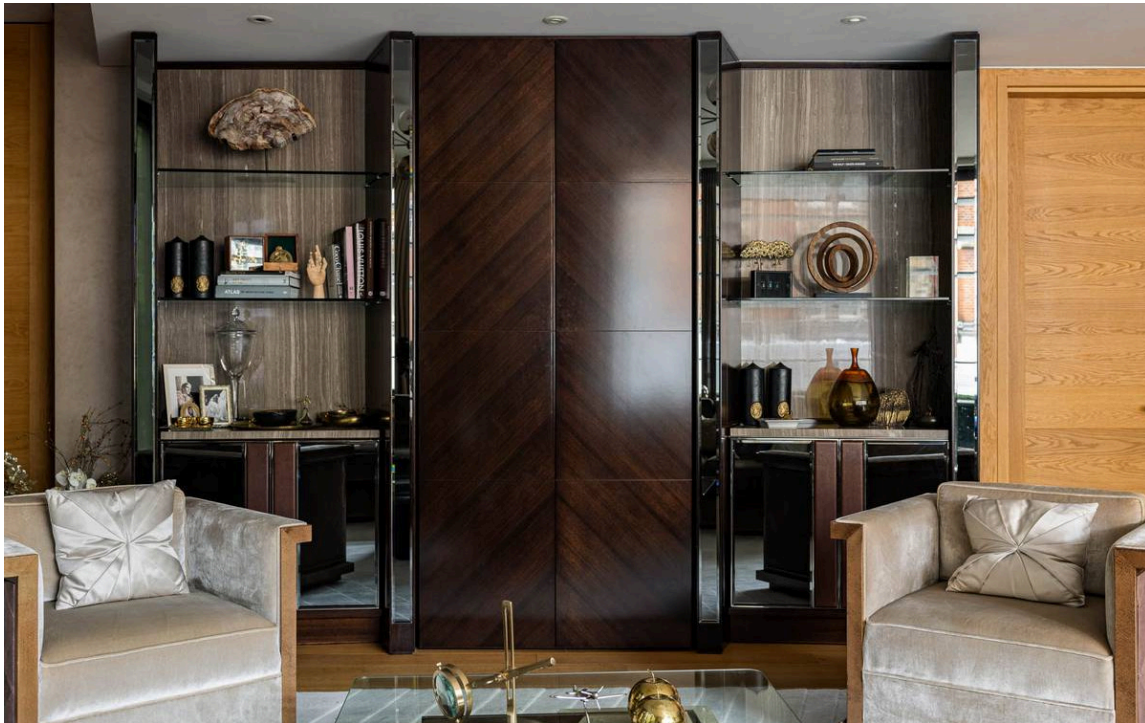
Downstairs, the first floor features a pair of bedrooms. Both have ensuite bathrooms with baths, floor-to-ceiling windows and separate dressing areas. The flat mixes contemporary and traditional styles and is finished to the highest standard, with controls for lighting, cooling and heating. Its interiors blend wood and stone to give a natural but sophisticated aesthetic.



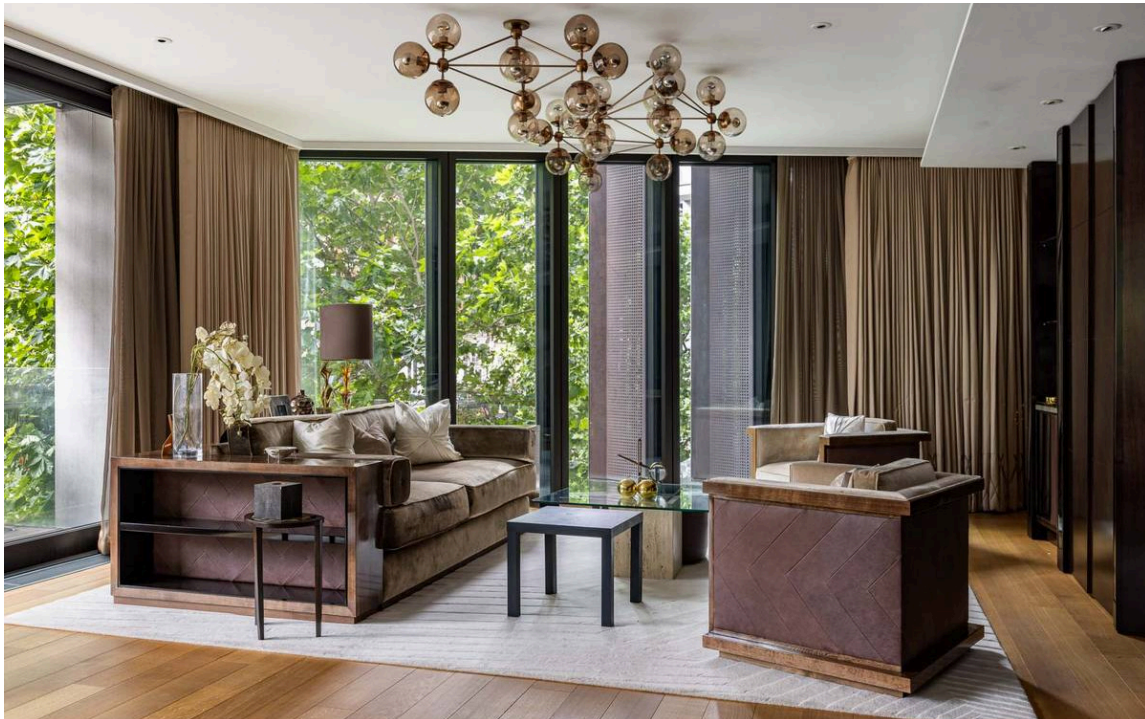


Outdoor Spaces

The flat offers a south-facing balcony with beautiful views and enough space for outdoor seating. Furthermore, the building is one of the London's most luxurious developments with lifts, a 24-hour concierge service, underground parking and wine cellar storage. Furthermore, residents of One Hyde Park have access to a private cinema, a pool, a jacuzzi, a sauna and spa, a gym and squash court, and a business suite.



The Design





The Neighbourhood

The property is superbly located. On one side are the open spaces of Hyde Park and Kensington Gardens. On the other side are the world-class shops and restaurants of Knightsbridge. The underground station is a few moments away, while the prestigious Mandarin Oriental Hotel is next door.

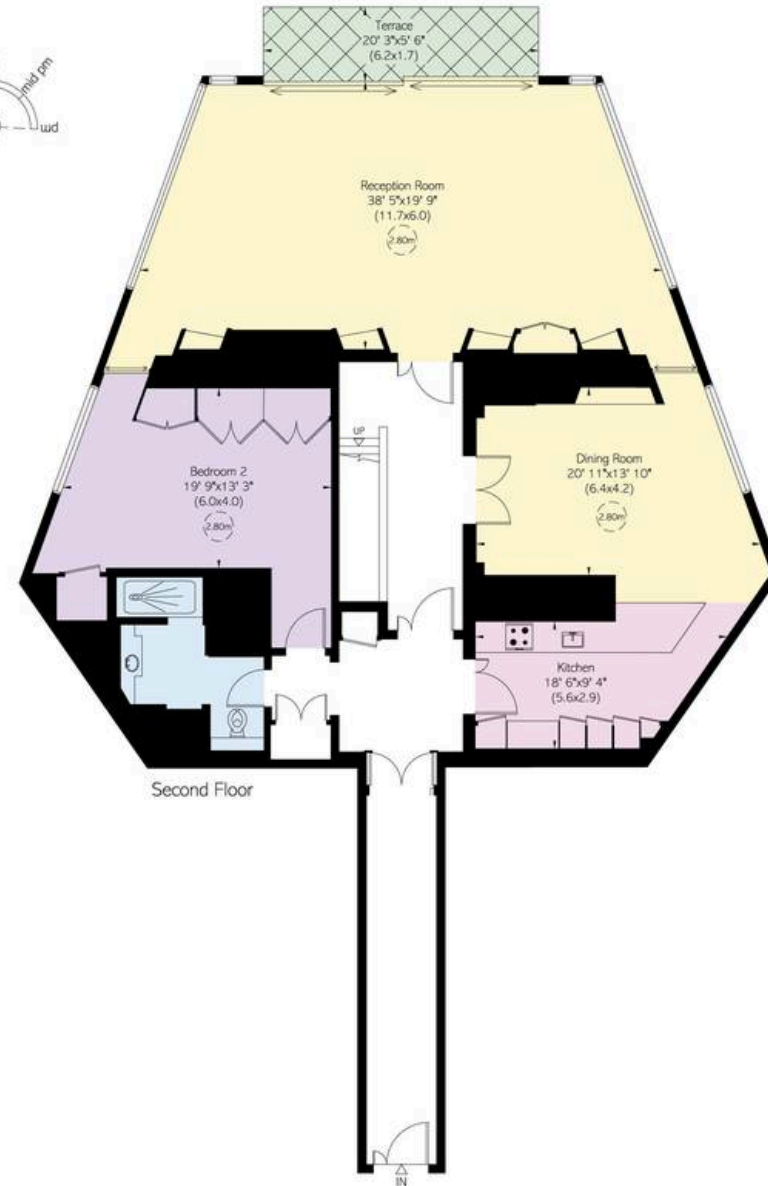
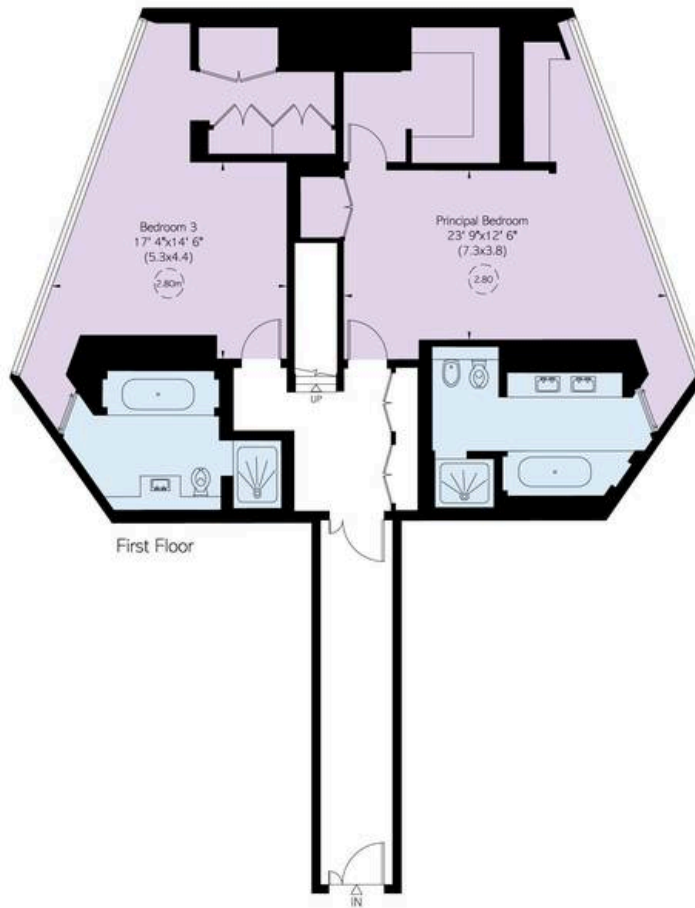
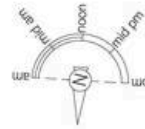
One Hyde Park, Kinightsbridge , SW1

**RUSSELL
SIMPSON**

Approximate Internal Area
3,854 sq ft/ 358 sq m

Outside Area
107 sq ft/ 10 sq m

This plan is for layout guidance only. Not drawn to scale unless stated. Window and door openings are approximate. Whilst every care is taken in the preparation of this plan, please check all dimensions, shapes, and compass bearings before making any decisions reliant upon them.



**RUSSELL
SIMPSON**

Contact Us

+44 (0) 20 7225 0277

151A Sydney Street
London
SW3 6NT

chelsea@russellsimpson.co.uk

In accordance with the Property Mis-Description Act 1991, the following details have been prepared in good faith, and are not intended to constitute part of an offer or contract. Any information contained herein (whether in the text, plans or photographs) is given in good faith but should not be relied upon as being a statement of representation of fact. Nothing in these Particulars shall be deemed to be a statement that the property is in good condition or otherwise nor that any services or facilities are in good working order. Any measurements of distances referred to herein are approximate only. October 2021