



## **RUSSELL SIMPSON**

Sublime three bedroom flat with  
superb facilities to rent in  
Knightsbridge's most luxurious  
development

ONE HYDE PARK  
KNIGHTSBRIDGE SW1X

# One Hyde Park

£9,750 P/W

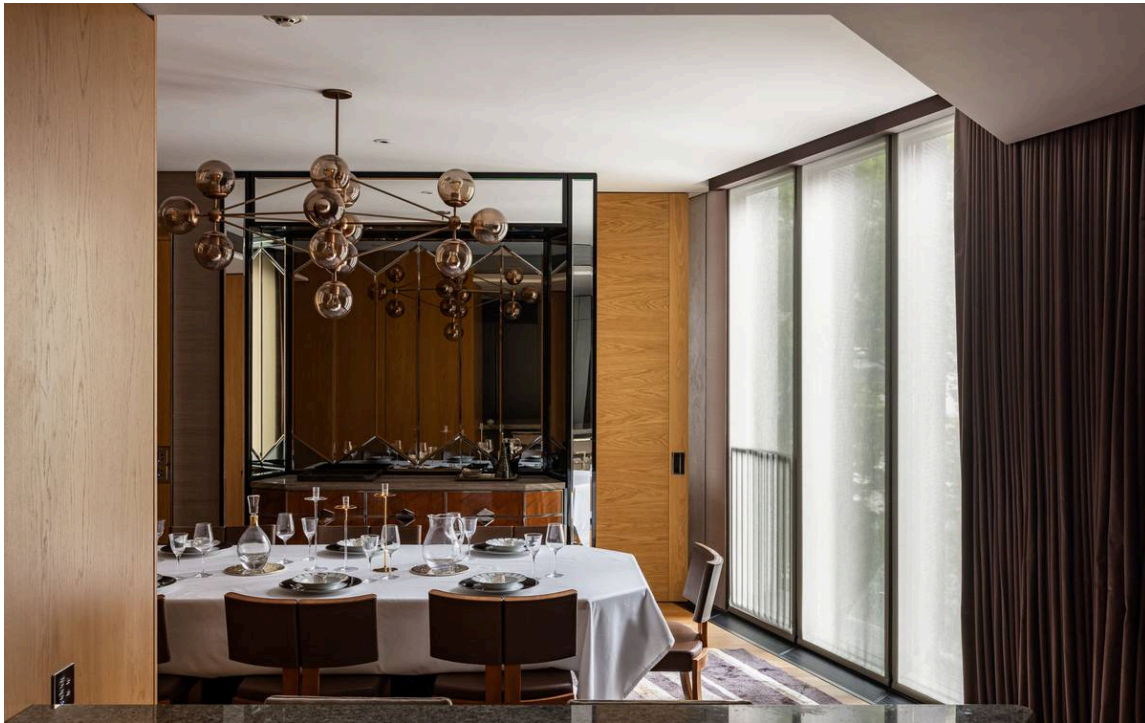
BEDROOMS 3	INTERNAL 3,748 <small>SQ FT</small>	OUTDOOR 106 <small>SQ FT</small>	FURNISHED STATUS Furnished
BATHROOMS 3	348 <small>SQM</small>	EPC B	COUNCIL TAX Westminster City, H

# The Property

Exceptional duplex flat in celebrated Candy Brothers building with access to pool, cinema, parking and 24-hour concierge service







## Indoor Spaces

Stepping into the flat on the second floor, the entrance hall leads through to a central staircase hall. Beyond is a generous reception room with floor-to ceiling windows and sliding French doors that open onto a south-facing balcony, ensuring this space is filled with light. This floor also contains an elegant dining room that leads through to a convenient fitted kitchen. A bedroom with storage space and an adjacent bathroom completes this level.





## The Bedrooms

Downstairs, the first floor features a pair of bedrooms. Both have ensuite bathrooms with baths, floor-to-ceiling windows and separate dressing areas. The flat mixes contemporary and traditional styles and is finished to the highest standard, with controls for lighting, cooling and heating. Its interiors blend wood and stone to give a natural but sophisticated aesthetic.

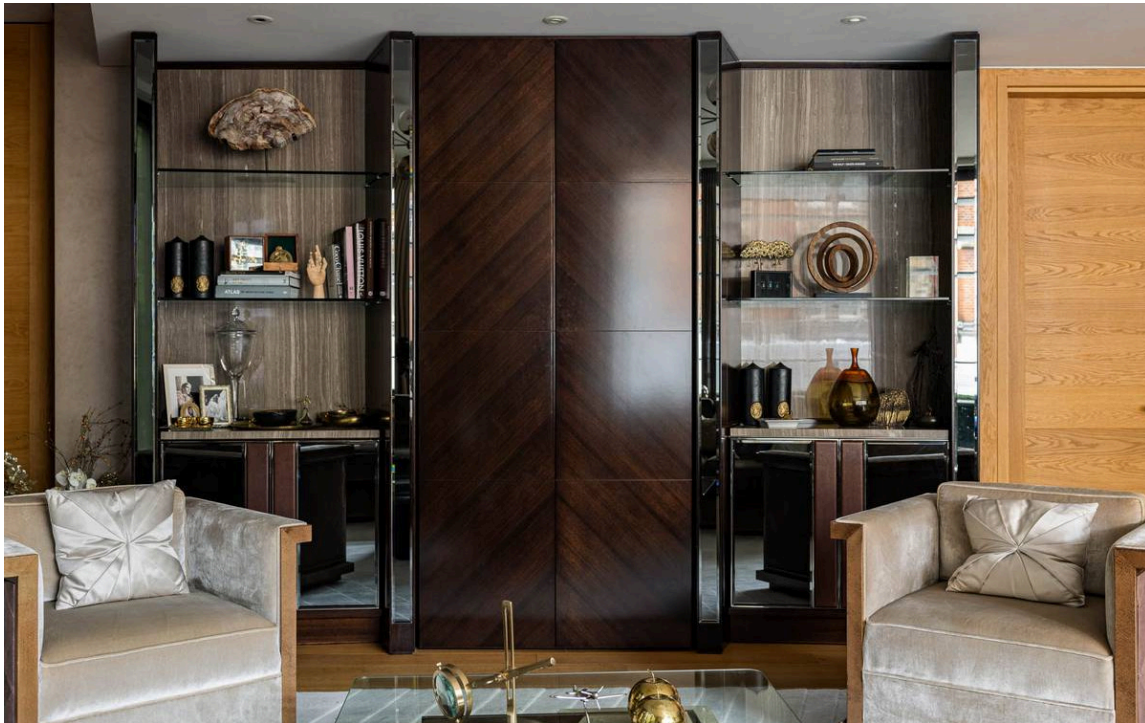




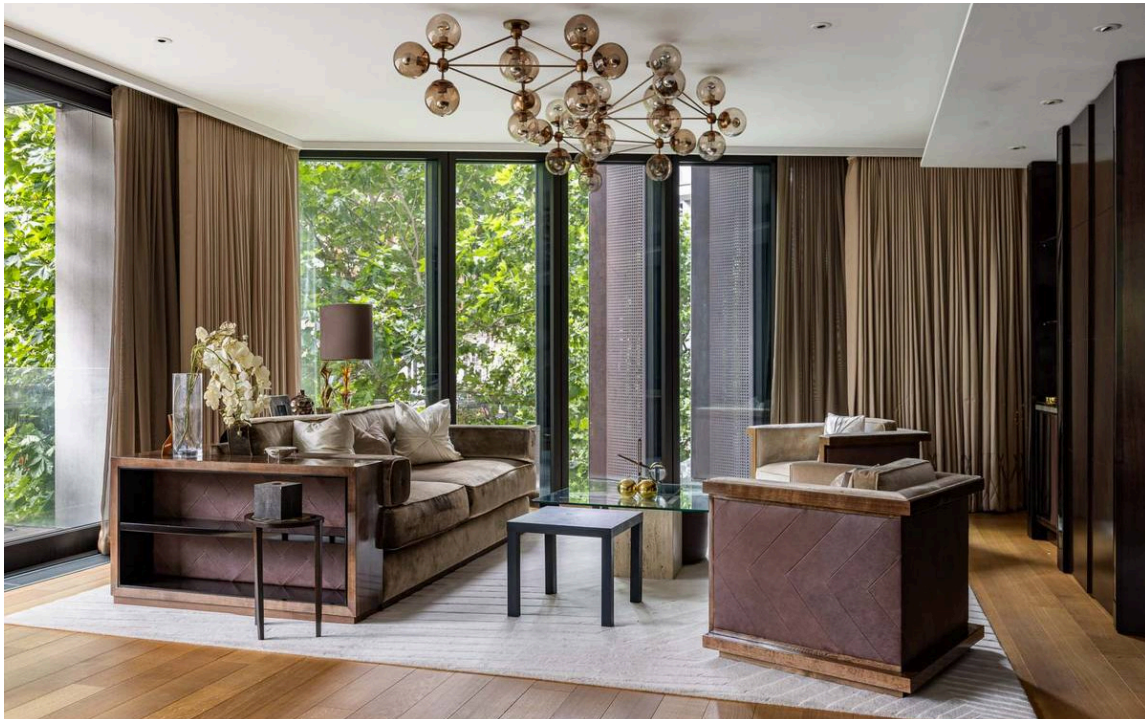


## Outdoor Spaces

The flat offers a south-facing balcony with beautiful views and enough space for outdoor seating. Furthermore, the building is one of the London's most luxurious developments with lifts, a 24-hour concierge service, underground parking and wine cellar storage. Furthermore, residents of One Hyde Park have access to a private cinema, a pool, a jacuzzi, a sauna and spa, a gym and squash court, and a business suite.



The Design







## The Neighbourhood

The property is superbly located. On one side are the open spaces of Hyde Park and Kensington Gardens. On the other side are the world-class shops and restaurants of Knightsbridge. The underground station is a few moments away, while the prestigious Mandarin Oriental Hotel is next door.



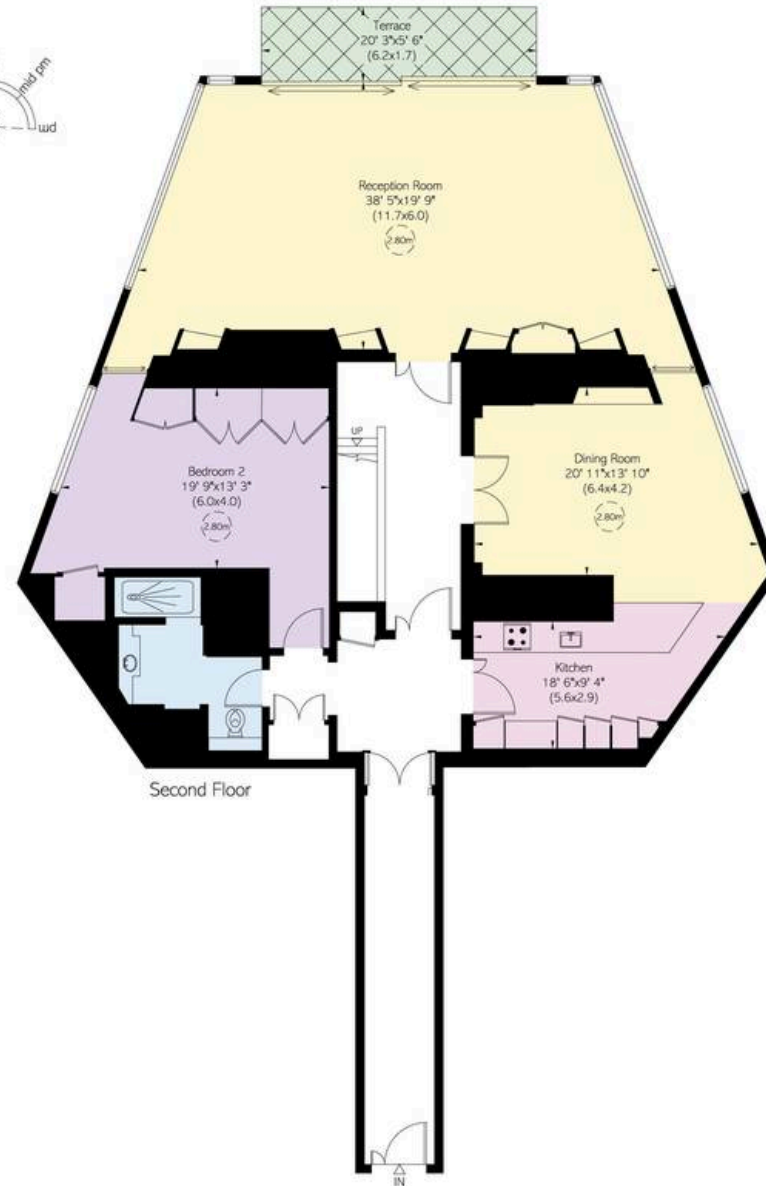
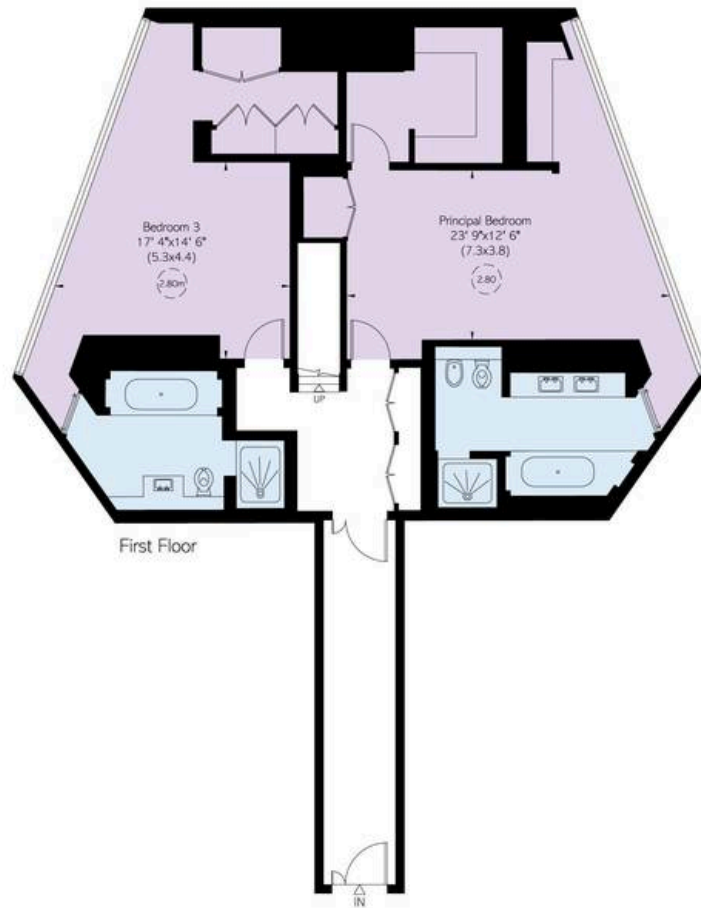
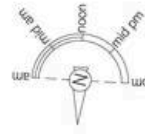
One Hyde Park,  
Kinightsbridge, SW1

**RUSSELL  
SIMPSON**

**Approximate Internal Area**  
3,854 sq ft / 355 sq m

**Outside Area**  
107 sq ft / 10 sq m

This plan is for layout guidance only. Not drawn to scale unless stated. Windows and door openings are approximate. Whilst every care is taken in the preparation of this plan, please check all dimensions, shapes, and compass bearings before making any decisions reliant upon them.



**RUSSELL  
SIMPSON**

---

## Contact Us

+44 (0) 20 7225 0277

Contact us

[info@russellsimpson.co.uk](mailto:info@russellsimpson.co.uk)

---

## Sydney Street

+44 (0) 20 7225 0277

151A Sydney Street

London

SW3 6NT

[chelsea@russellsimpson.co.uk](mailto:chelsea@russellsimpson.co.uk)

---

## Kensington Square

+44 (0) 20 3761 9691

13 Kensington Square

London

W8 5HD

[kensington@russellsimpson.co.uk](mailto:kensington@russellsimpson.co.uk)