

RUSSELL SIMPSON

Charming and colourful cottage-like
house to rent near Queen's Park

NUTBOURNE STREET
NORTH KENSINGTON W10

Nutbourne Street

Let

BEDROOMS 2-3	INTERNAL 1,163 SQ FT	OUTDOOR 153 SQ FT	FURNISHED STATUS Furnished / Unfurnished
BATHROOMS 2	108 SQM	EPC C	COUNCIL TAX Westminster City, D

The Property

Two or three bedroom home with bright interiors, a spacious reception room and a paved rear garden



img 1

Dining Area

img 2

Kitchen



Indoor Spaces

Entering the house on the ground floor, the front hall opens onto a generous reception room running the length of the house. This room communicates directly with an open-plan kitchen and separate dining area. Double French doors lead into the rear garden, while skylights and an internal window ensure the whole level is filled with light.



The Bedrooms

The first floor contains a pair of bedrooms. The principal bedroom has an ensuite bathroom and considerable storage space. The second bedroom has a well-proportioned bathroom with a bath next door. The second floor features a study that can be used as a bedroom and also contains additional storage.

img 1

Principal Bedroom

Details

The property has been decorated in a characterful fashion with brightly painted rooms adding to its charm.



The Neighbourhood & Outdoor Spaces

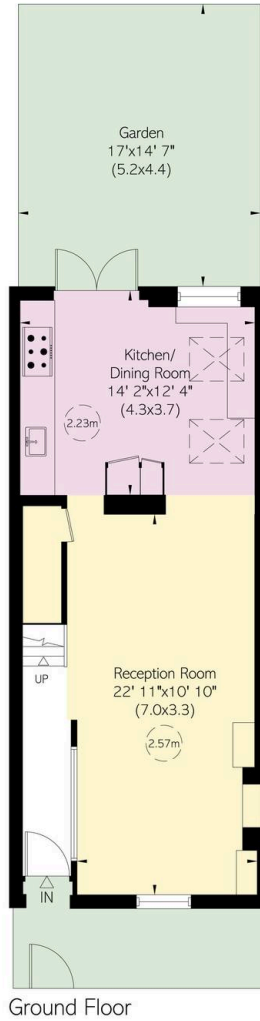
The house benefits from a rear garden with a paved seating area. It also set back from the street by a fenced front garden.

Nutborne Street is a quiet residential road lined with picturesque properties. From here, both Queen's Park and Kensal Green stations are within walking distance. In addition, the restaurants and shops of Golborne Road are nearby, while the Grand Union Canal with its popular towpath is also close.



img 2

Outside Seating



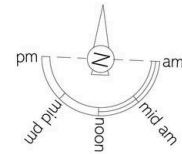
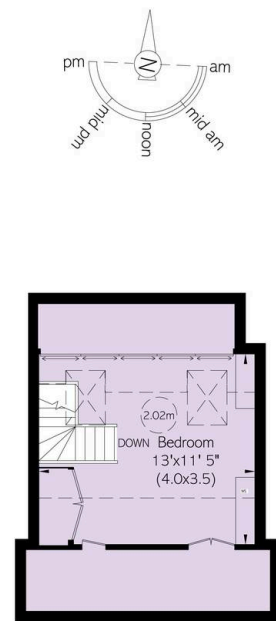
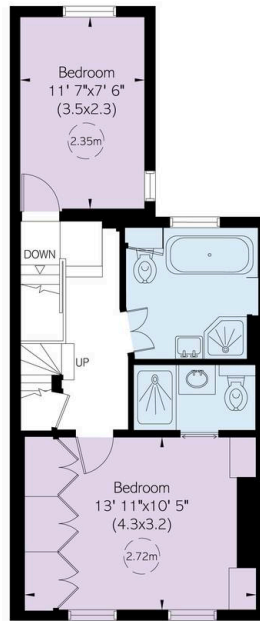
Nutbourne Street, W10 **RUSSELL SIMPSON**

Approximate Internal Area
1,163 sq ft/ 108 sq m

Including limited use area
134 sq ft/ 14 sq m

Outside Area
320 sq ft/ 30 sq m

This plan is for layout guidance only. Not drawn to scale unless stated. Windows and door openings are approximate. Whilst every care is taken in the preparation of this plan, please check all dimensions, shapes, and compass bearings before making any decisions reliant upon them.



**RUSSELL
SIMPSON**

Contact Us

+44 (0) 20 7225 0277

Contact us

info@russellsimpson.co.uk

Sydney Street

+44 (0) 20 7225 0277

151A Sydney Street

London

SW3 6NT

chelsea@russellsimpson.co.uk

Kensington Square

+44 (0) 20 3761 9691

13 Kensington Square

London

W8 5HD

kensington@russellsimpson.co.uk