



## **RUSSELL SIMPSON**

Stylish two bedroom flat to let in  
central Bloomsbury location

NORTH MEWS  
RUSSELL SQUARE WC1N

North Mews

Let

BEDROOMS 2	INTERNAL 791 SQ FT	OUTDOOR —	FURNISHED STATUS Furnished
BATHROOMS 2	73 SQM	EPC C	COUNCIL TAX Camden Council, G



## The Property

Modern flat with contemporary design and light-filled interiors close to Exmouth Market

The flat is decorated in a contemporary style with minimalist design details, making for bright and stylish interiors.





## Indoor Spaces

Entering the flat on the second floor, an entrance hall connects the main rooms of the building. On one side of the flat is a reception room with enough space for separate dining and seating areas. This room communicates with an open-plan kitchen, while wide south-facing windows bring in light throughout the day.



## The Bedrooms

On the other side of the flat is a principal bedroom with ensuite bathroom. There is also a second bedroom with a bathroom next door, and both rooms contain inbuilt storage.





## The Neighbourhood

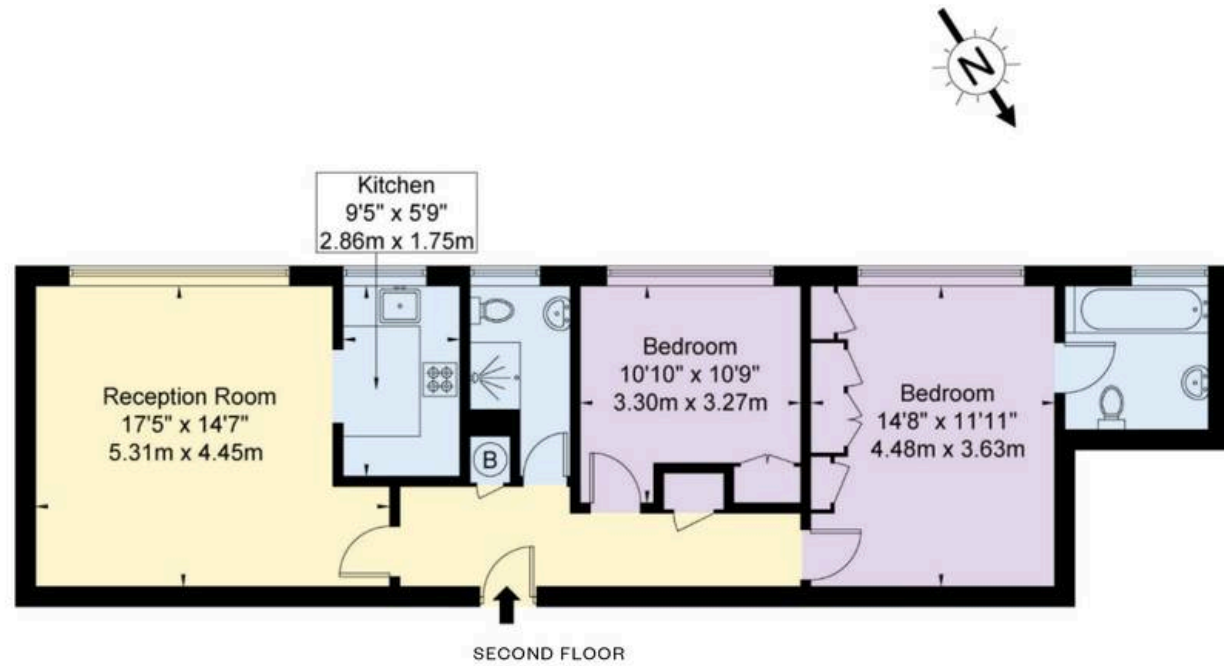
North Mews is a quiet street in Bloomsbury, traditionally one of London's creative and literary centres. From here, the Chancery Lane underground station is a short walk away, while Russell Square station is also close. In addition, the restaurants and bars of Exmouth Market and the Brunswick Centre are all within easy reach.

North Mews,  
WC1N

**Approx Gross Internal Area**  
791 sq ft / 73.5 sq m

**RUSSELL  
SIMPSON**

This plan is for layout guidance only. Not drawn to scale unless stated. Windows and door openings are approximate. Whilst every care is taken in the preparation of this plan. Please check all dimensions, shapes, and compass bearings before making any decisions reliant upon them.



**RUSSELL  
SIMPSON**

---

## Contact Us

+44 (0) 20 7225 0277

Contact us

[info@russellsimpson.co.uk](mailto:info@russellsimpson.co.uk)

---

## Sydney Street

+44 (0) 20 7225 0277

151A Sydney Street

London

SW3 6NT

[chelsea@russellsimpson.co.uk](mailto:chelsea@russellsimpson.co.uk)

---

## Kensington Square

+44 (0) 20 3761 9691

13 Kensington Square

London

W8 5HD

[kensington@russellsimpson.co.uk](mailto:kensington@russellsimpson.co.uk)