



## **RUSSELL SIMPSON**

A unique four bedroom double artist studio detached house recently converted into a luxury family home located in the heart of Chelsea

MULBERRY WALK  
CHELSEA SW3

Mulberry Walk

£6,000 <sub>P/W</sub>

BEDROOMS 4	INTERNAL  3,191 <sub>SQ FT</sub>  296 <sub>SQM</sub>	OUTDOOR  1,104 <sub>SQ FT</sub>	FURNISHED STATUS  Furnished
BATHROOMS 3		EPC  D	COUNCIL TAX  RBKC, H

# The Property

Bright and spacious townhouse on a secluded street between the King's Road and the Fulham Road

The house is decorated in a graceful contemporary style and presented in very good condition. Calm interiors add to the sense of brightness and space throughout.





## Entertaining Spaces

Stepping into the house on the ground floor, the entrance lobby leads through to a central hall with a lift. On one side lies an open-plan kitchen flowing through to a dining room. Beyond is a utility corridor offering separate street and garden access.



## The Reception Room

On the other side of the hall is a spectacular reception room with high ceilings, overhead skylights and double French doors opening out onto the garden. A guest WC completes this level.



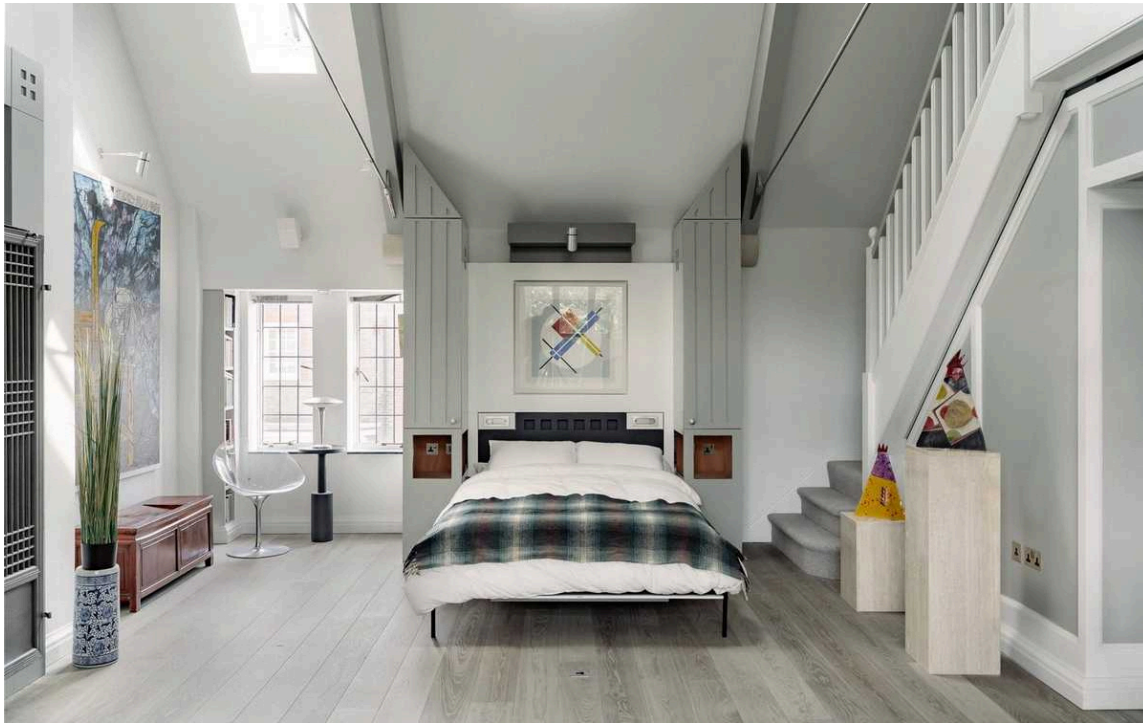




## The Principal Bedroom

The first floor is entirely occupied by the impressive principal bedroom suite. This includes a bedroom, a dressing room, an office and a generous bathroom with bath and shower. The dressing room opens onto the balcony, as well as giving garden access.





## Further Bedrooms

The second floor features three more bedrooms, sharing a bathroom, including a penthouse studio with high vaulted ceilings and full-length windows overlooking the garden. Stairs lead up to a bathroom and a kitchenette on the third floor, making this the perfect space for recitals or entertaining.





## Outdoor Spaces

The house includes a paved rear garden and a generous balcony with wooden decking. Both provide plenty of space for outdoor entertaining.







## The Neighbourhood

Mulberry Walk was laid out in the early twentieth century. Its characterful houses combine elements of neo-Georgian and Arts & Crafts architecture. This property is especially interesting, given its façade and Art Deco design details.

The street is perfectly positioned for the many restaurants and shops of the King's Road and the Fulham Road. Furthermore, South Kensington station is a short walk away.



Ground Floor



First Floor

## Mulberry Walk, SW<sub>3</sub>

**RUSSELL  
SIMPSON**

### Approximate Internal Area

3,096 sq ft/ 288 sq m

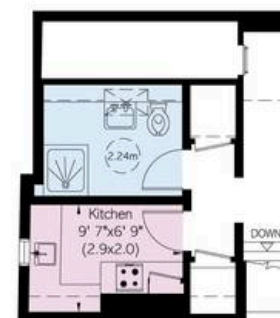
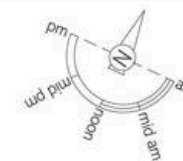
### Including limited use area and outside storage

123 sq ft/ 11 sq m

### Outside Area

1,105 sq ft/ 103 sq m

This plan is for layout guidance only. Not drawn to scale unless stated. Windows and door openings are approximate. Whilst every care is taken in the preparation of this plan, please check all dimensions, shapes, and compass bearings before making any decisions reliant upon them.



Third Floor



Second Floor



**RUSSELL  
SIMPSON**

---

## Contact Us

+44 (0) 20 7225 0277

151A Sydney Street  
London  
SW3 6NT

[chelsea@russellsimpson.co.uk](mailto:chelsea@russellsimpson.co.uk)

In accordance with the Property Mis-Description Act 1991, the following details have been prepared in good faith, and are not intended to constitute part of an offer or contract. Any information contained herein (whether in the text, plans or photographs) is given in good faith but should not be relied upon as being a statement of representation of fact. Nothing in these Particulars shall be deemed to be a statement that the property is in good condition or otherwise nor that any services or facilities are in good working order. Any measurements of distances referred to herein are approximate only. October 2021