



RUSSELL SIMPSON

A recently refurbished and well
proportioned three bedroom
apartment

MONTROSE COURT
SOUTH KENSINGTON SW7

Montrose Court

£1,100 _{P/W}

<div>BEDROOMS</div> <div>3-3</div>	<div>INTERNAL</div> <div>1,150 _{SQ FT}</div> <div>106 _{SQM}</div>	<div>OUTDOOR</div> <div>—</div>	<div>FURNISHED STATUS</div> <div>Furnished</div>
<div>BATHROOMS</div> <div>2-2</div>		<div>EPC</div> <div>D</div>	<div>COUNCIL TAX</div> <div>—</div>



The Property

On the ground floor of this secure and well located portered apartment block situated close to Hyde Park. Montrose Court is situated at the northern end of Princes Gate.





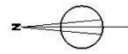
The Bedrooms





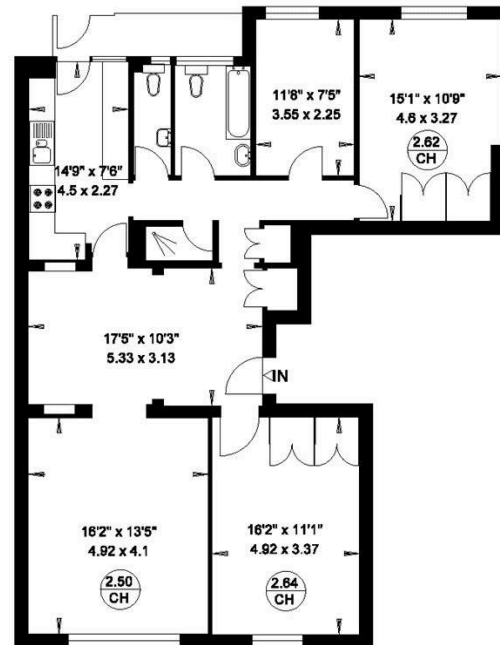
The Neighbourhood

The property is well placed for shops, museums and public transport facilities of South Kensington



25 MONTROSE COURT
LONDON SW7

Gross Internal Area = 106 sq. metres
1150 sq. feet



GROUND FLOOR

**RUSSELL
SIMPSON**

Contact Us

+44 (0) 20 7225 0277

151A Sydney Street
London
SW3 6NT

chelsea@russellsimpson.co.uk

In accordance with the Property Mis-Description Act 1991, the following details have been prepared in good faith, and are not intended to constitute part of an offer or contract. Any information contained herein (whether in the text, plans or photographs) is given in good faith but should not be relied upon as being a statement of representation of fact. Nothing in these Particulars shall be deemed to be a statement that the property is in good condition or otherwise nor that any services or facilities are in good working order. Any measurements of distances referred to herein are approximate only. October 2021